



TOO HOTEL

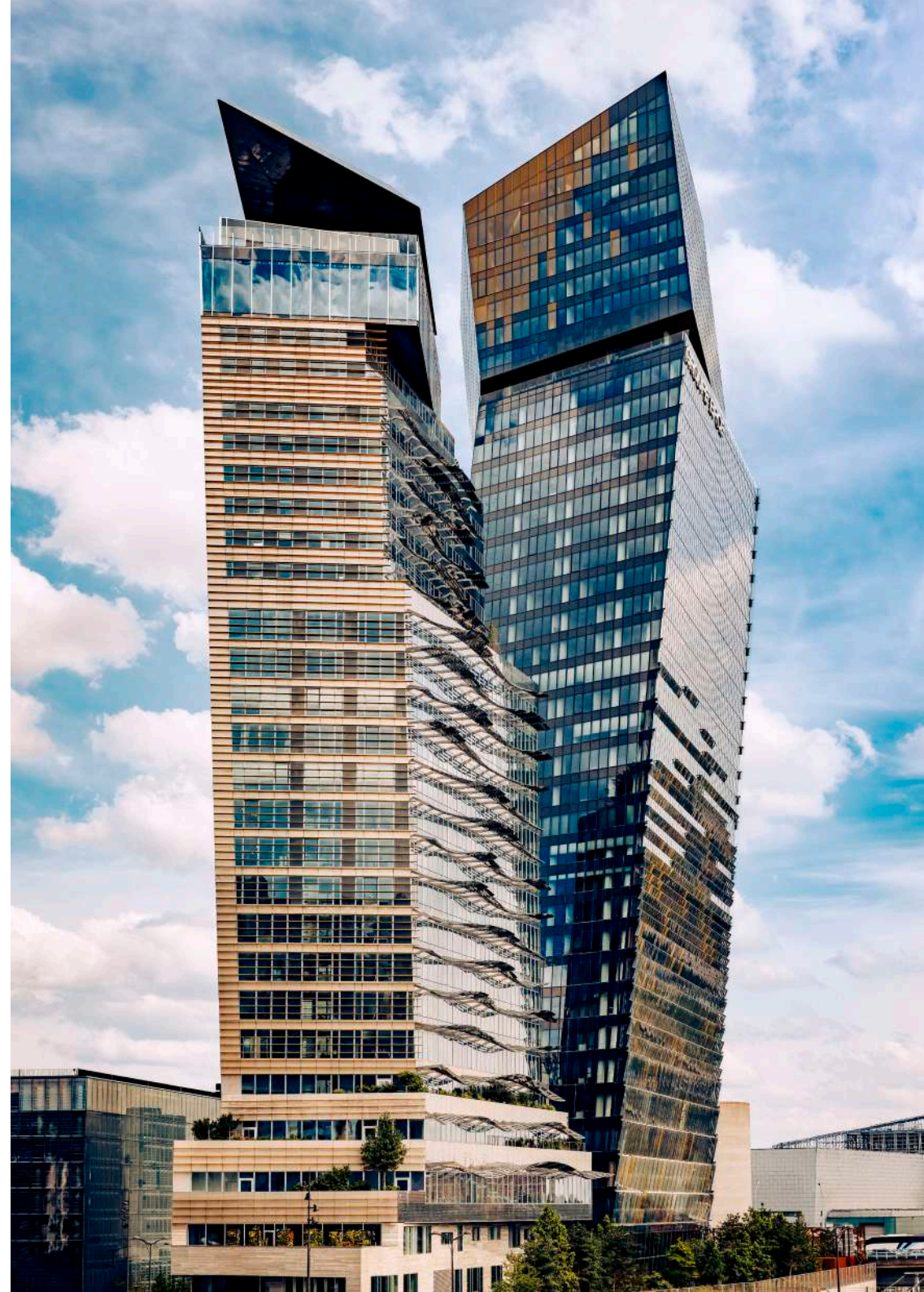
TOO HOTEL

Set in a lively, bustling district, between Station F, the French National Library (BNF) and the headquarters of several international companies, there's a new destination in the city, offering something for everyone. Born of a dream, suspended, the TOO Hotel sits at the very top of one of Jean Nouvel's Duo Towers.

Surprising, mysterious, and impossible to categorise, the TOO Hotel is distinguished by its lyrical and imposing architectural presence. The top ten floors of this urban lighthouse offer a unique panoramic view of Paris and its major landmarks. Seen from this apex, the landscape changes as the hours roll by, and from dawn to dusk, the sunlight plays over the interior spaces.

Clinging to the clouds, this is a unique establishment, with artistic direction and interior architecture by Philippe Starck, an embodiment of the modern urban dream of new generations of Parisians and travellers.

Here, behind the glass partitions blurring the landmarks, there are references to other capitals half a world away, cities supercharged with modernity, where excess becomes spectacle and the exaltation of life down below, so far away and at the same time so close, takes on a heady rhythm.



ROOMS & SUITES

Starting at 24 m², the 139 rooms of the TOO Hotel all face out to the sky. Everything here is about contrast and variation, interesting differences and surprises, such as the fluorescent lights or the animal heads hiding in secret panels. The sensory experience blends into the dream.

Huge mobile mirror partitions continually play with the dancing tones of the sunlight. The windows call to mind giant cinema screens. With beds positioned away from the walls, there's a feeling of weightlessness when you lie down and look at the view. The colour palette bathes you in shades from cream to orange.

On the floor, your feet sink softly into clouds while the wickerwork headboards are reminders of the need for comfort behind all of the design work. Everything is done to provide comfort to the eye and to invite the touch. Between the sky and the earth, the refined textures, with their play on contrasts with the angular precision of the tower, are real invitations to curl up cosily. The bathrooms, with their generous basins and coiling lamps that wind around themselves, offer bathtubs and rainfall showers for a moment of relaxation there among the clouds, as you behold the majesty of Paris.



CATEGORIES

The rooms and suites of the TOO Hotel are divided into 12 categories, but first and foremost they offer a choice of three views: Paris, the Eiffel Tower or the Seine. From here, you can watch the path of the sun crossing the sky, the age-old watcher lighting the major landmarks of Paris from East to West as the day goes on. The rock of the Bois de Vincennes, Beaubourg, the Seine, Notre-Dame, the Sacré Coeur, the Louvre, Les Invalides, etc. Once the ball of fire makes its last appearance to the rooms and suites that have a view of the Eiffel Tower, then begins its descent, to go down over the Grande Arche.

ROOMS & SUITES WITH A VIEW OF THE SEINE

- 4 standard rooms - 24m²
- 18 superior rooms - 25m²
- 14 deluxe rooms - 27m²
- 34 high floor deluxe rooms - 27m²
- 12 family junior suites - 40m²

ROOMS & SUITES WITH A VIEW OF PARIS

- 27 deluxe rooms - 27m²
- 9 executive rooms - 28m²
- 5 executive rooms with terrace 28m²

ROOMS & SUITES WITH A VIEW OF THE EIFFEL TOWER

- 3 deluxe rooms - 27m²
- 3 executive rooms - 28m²
- 4 Eiffel Tower junior suites - 38m²
- 6 deluxe high floor Eiffel Tower junior suites - 43m²





TOO RESTAURANT

At a height of 100 m, nestled in a glass cube with ceilings dotted with “gold bars”, with its sophisticated furniture made of natural materials, the TOO Restaurant offers an exceptional and luxurious experience. The light panels set into the floor create a sensation of vastness and mild giddiness that reminds us that anything is possible here. The powder pink walls, wood panelling and artistic frescoes by Pierre Monestier stand as the silent custodians of secrets, witnessing memorable evenings and whispered conversations.

This is a spectacular setting for enjoyment of classic dishes from all over the world, reinterpreted with a touch of contemporary flavour. Benjamin Six and his talented team bring great skill and originality to their fresh combinations of flavours, going beyond long-dismantled borders to offer a creative and cosmopolitan menu with many influences. There are splendid views of the Eiffel Tower, Notre-Dame and the Sacré-Cœur from this contemporary high-end restaurant, as well as a spectacular sunset.

OPENING HOURS & ACCESS

Breakfast: 7 am to 10:30 am
Lunch: 12:15 pm to 3 pm
Dinner: 7 pm to 11 pm
Located on the 25th floor of the hotel

CAPACITY

180 seats
140 seats at tables
30 seats at the bar



EAT & DRINK

The TOO Restaurant can offer you an inspired, contemporary and cosmopolitan international cuisine, blending flavours, influences and desires. From this premium panoramic restaurant, nestled within a glass cube at a height of 100 metres, you can see the Eiffel Tower, Notre-Dame, the Seine and the Sacré-Cœur coming to life with the progress of the sun. From sunrise to sunset, all year round, the TOO restaurant offers a celestial break.

SAMPLE MENU :

STARTERS

Chicken popcorn, lemon mayo
Grilled baby artichokes, Granny Smith apple relish Salmon Tataki, sweet lime sauce

MAIN COURSES

Roasted salmon Teriyaki, pickled cucumber
Langoustine tempura, marinated in ginger and soy, Tentsuyu sauce,
Angus short ribs, matured in Shio Koji, Yakiniku pepper sauce

SIDE DISHES

Miso eggplants
Grilled corn wedges with parmesan & chilli, chilli mayo

«PIERRE HERMÉ» DESSERT COLLECTION

Carrément chocolat
Ispahan
2000 feuilles



TOO TACTAC

SKYBAR

The TOO TacTac Skybar splits the clouds, by day and by night, in summer and winter, ahead of the world. From here, you can see the shifting colours of the city as the seasons fly. This unending spectacle is a huge breath of fresh air

In the afternoon when, in autumn, night has already fallen, or in the electric atmosphere of long summer evenings, the city lights come on, one point of light after another until they form an array of stars.

From this bar and restaurant at the top, you can enjoy a shared dining experience that is convivial, accessible and international, whilst feeling even closer to the vastness of the heavens, on the impressive terrace, with an area of almost 150 m2, overlooking the Seine.

The atmosphere shifts and adapts as the evening progresses, making TOO TacTac the ideal venue, whether you visit for one drink after work, for a prolonged dinner with friends, or for a celebration under the stars in the supercharged atmosphere of the live shows and DJ sets, between a couple of wild air hockey matches.

OPENING HOURS & ACCESS

Sunday > Thursday: 4 pm to midnight
Friday & Saturday: 4 pm to 2 am
Tea Time 4 pm to 6 pm
Brunch every Sunday at 11:30 am
Located on the 27th and top floor

CAPACITY

172 seats
75 seats inside
75 seats outside
22 seats at the bar



EAT & DRINK

TOO TacTac offers Asian-inspired cuisine, for sharing. The accessibility and conviviality of the dining experience at the TOO TacTac Skybar will transport your guests to other cities of the world, such as Tokyo or Shanghai.

SAMPLE MENU :

SNACKS

Edamame houmous, Carasau crackers

Assorted maki: avocado salmon, spicy tuna & veggie maki

Takoyaki, bonito & nori mayo

Duck spring rolls, black sweet and sour sauce Shrimp gyozas, vinegar-soy sauce

MAIN DISHES

Grilled yakitori chicken skewers, spring onions & yakitori sauce, furikake rice

Grilled salmon skewers, teriyaki barbecue sauce, furikake rice

DESSERT

Assortment of Pierre Hermé macaroons



TOO MEETING

The TOO Hotel can offer functional tailor-made meeting spaces, bathed in natural light. These prestigious and comfortable meeting rooms are equipped with elegant and appropriate furniture and state-of-the-art technology, including an integrated screen and overhead projector system.

A wide range of dining and catering options are available, including coffee breaks, lunches and meal trays, and it is also possible to use external catering services.

The spaces available can be adapted to many different layouts and sizes:

- ➔ One 24 m² room for 16 seated people
- Two rooms with an area of 37 m² for up to 20 seated people in each
- ⇒ One large room with area of 73m² able to hold 60 people in a full seating layout and up to 75 people in a cocktail layout

	TOO Cosy	TOO Busy	TOO Smart	TOO Gather
Area	24m ²	37m ²	37m ²	74m ²
School	6	15	10	25
U	12	14	11	26
Meeting	14	18	18	32
Theater	N/A	30	28	60
Cocktail	24	36	37	73



TOO CHILL

On the 17th floor, there is the TOO Chill spa. Planted with trees and decorated predominantly in a bright Mediterranean yellow, the spa offers you an unforgettable weightless break: the cabin windows look towards the sunrise; there is a fitness room equipped with 10 high-performance machines and a custom-made cedarwood sauna.

And the highlight: an extraordinary outdoor jacuzzi, perched up on the 17th floor, on a tree-lined terrace that offers a unique view of the sunrise and the Seine. With space for 10 people, it's an embodiment, in itself, of the outrageous luxury of this extraordinary place.

The TOO Hôtel has chosen to entrust this particular honour to the 100% French brand Ulé, which is an innovator for the future of botanical skincare, for the first time using a pioneering new cultivation method for the benefit of the skin. By infusing the quintessence of its plants into your skin's cells, Ulé makes use of their inherent resilience, strengthening it to offer radiant skin, even when the night's sleep has been too short, or the day's work too long or busy, daily lives. as is true for so many of us in our daily lives.

OPENING HOURS & ACCESS

Fitness: 6:30 am to 10:30 pm

Sauna: 7 am to 10:30 pm

Treatments: 12 noon to 8 pm

Jacuzzi: depending on the weather and season

Located on the 17th floor of the hotel

SERVICES

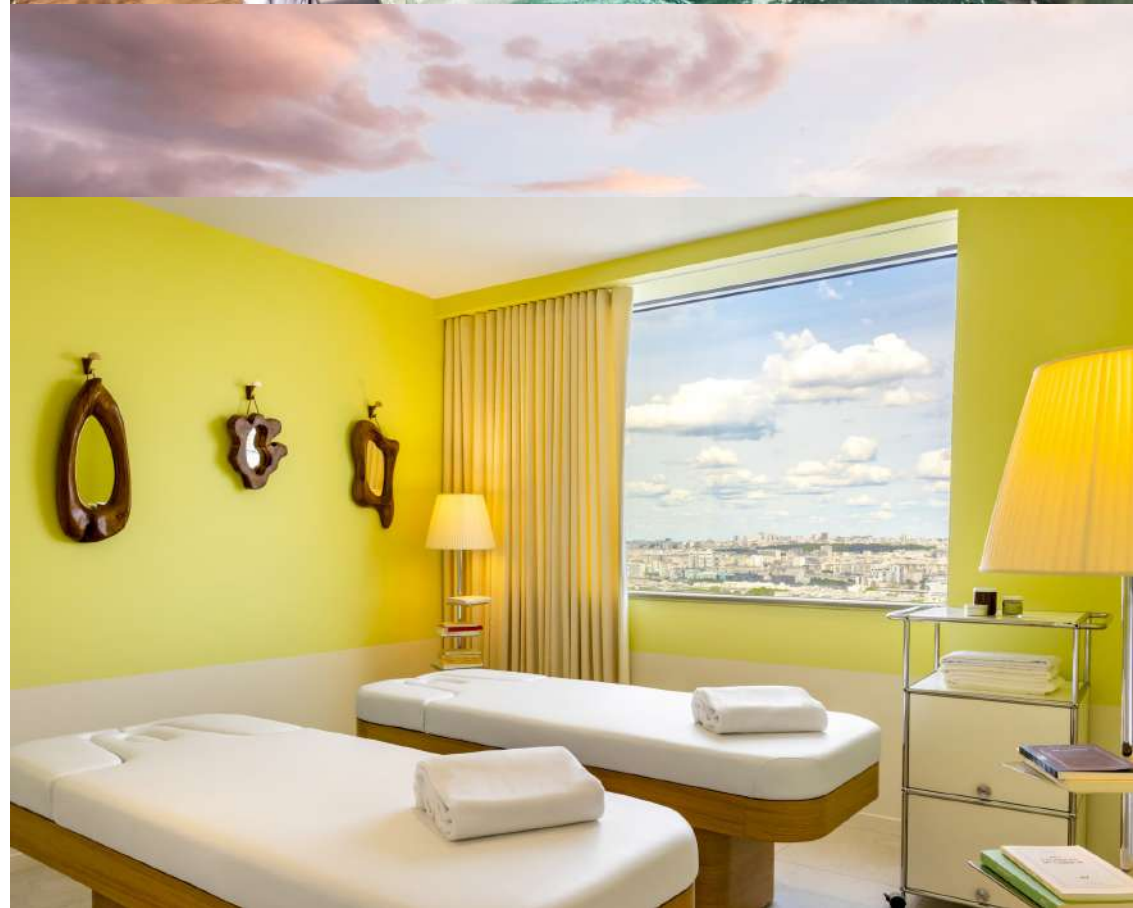
160 m² area

3 treatment cabins including two doubles

1 sauna

1 fitness room

1 outdoor



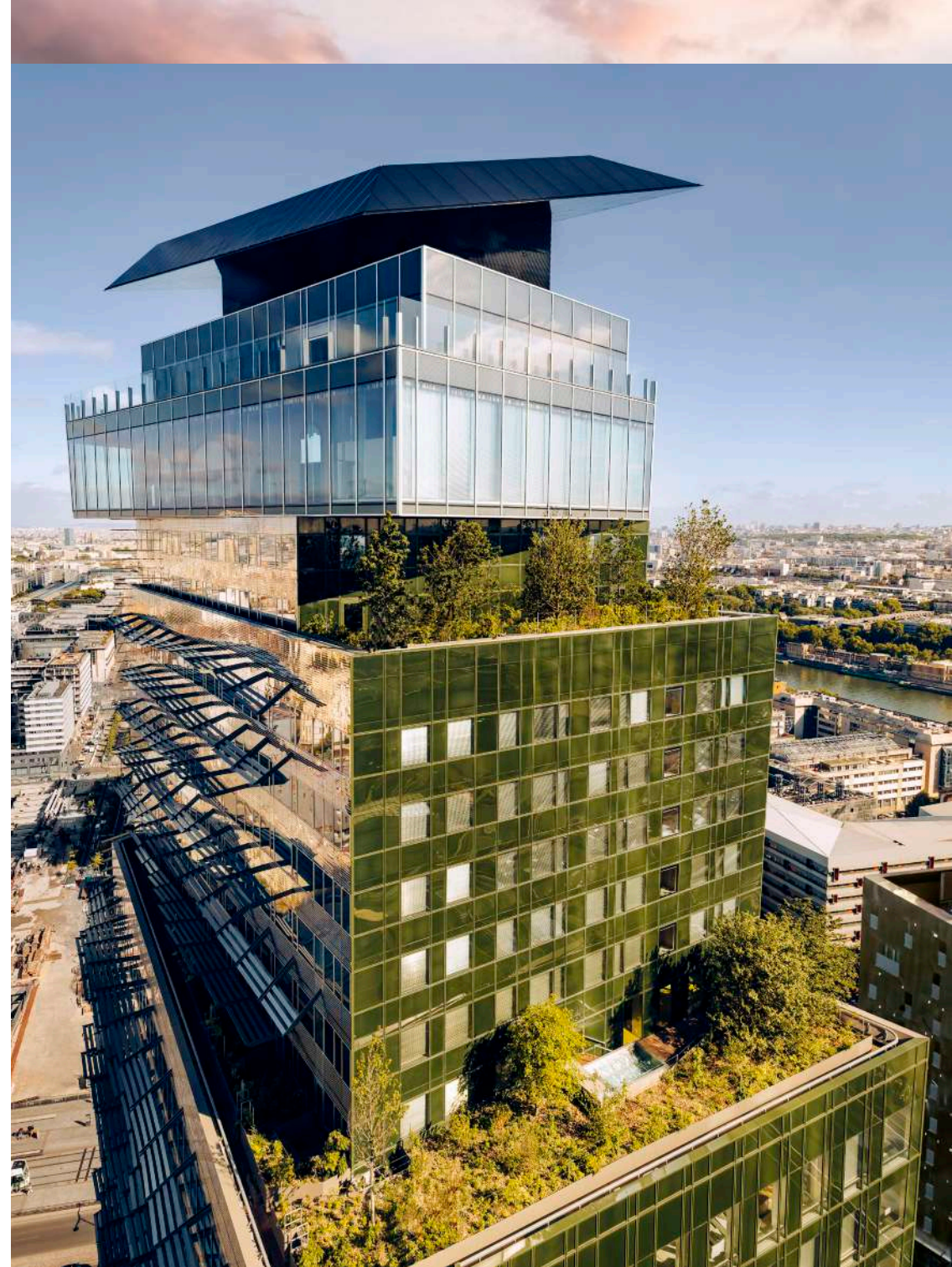
CSR

Offering a new destination for a generation embodying the future - this is the promise of the TOO Hotel. With a focus on the future, on environmental sensitivity and responsibility, TOO Hotel is consciously involved in its environment and in the world, meeting the criteria of the most rigorous environmental labels.

- NF BT HQE certification + Sustainable Building Passport at “Exceptional” level
- “EFFINERGIE +” certification
- LEED “Core and Shell” certification at “Platinum” level
- Well certification, Platinum level

In everyday use, the building has been designed to operate in an exemplary manner in terms of responsibility and to be a vehicle for the best possible practices:

- A limited number of bathtubs and customised taps to regulate water flow
- Rainwater harvesting
- Automation everywhere for intelligent energy management: automation of easy services (automatic air conditioning, smart rooms with occupancy sensors, etc.)
- Limited openings to prevent excessive temperature variations
- Dual blind systems to ensure full blackout in rooms and save energy
- Two-section bins to sort and separate waste



ACCESS

The TOO Hotel is located just a few minutes away from the Jardin des Plantes, Station F, the BNF, Bercy, the Cité de la Mode et du Design, the Le Monde newspaper, many art galleries and two Parisian rail stations: Lyon et Austerlitz.

This is the district of Paris that opens up first to those arriving from Orly, with more and more Parisians and visitors crossing paths here. This developing neighbourhood, already referred to by some as “Downtown Paris” is a new economic and cultural hub of the city.

ADDRESS

65 rue Bruneseau, 75013 Paris

ACCÈS TRANSPORTS

Tramway 3a - Avenue de France - 60m

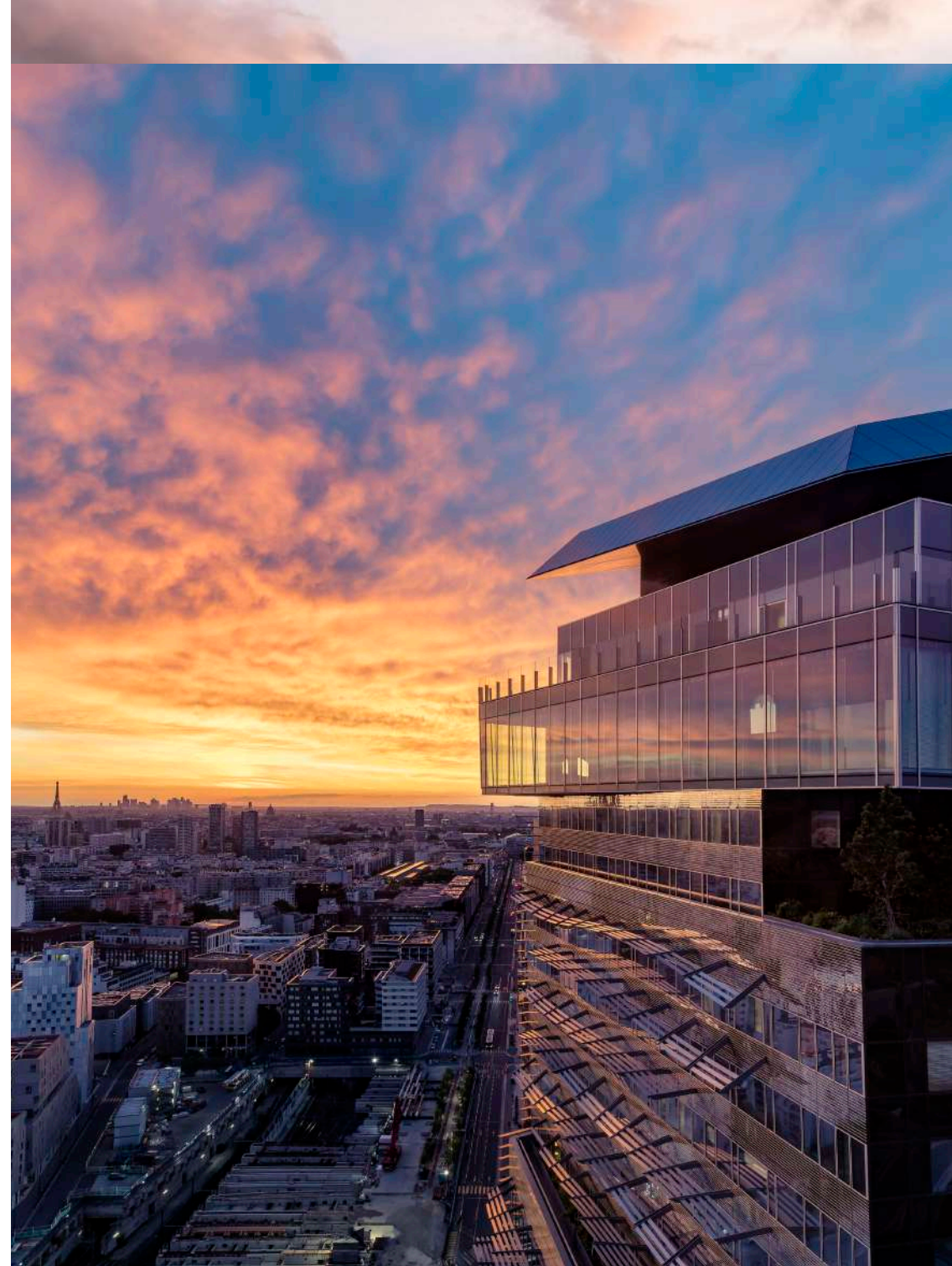
Metro Line 14 - Bibliothèque François Mitterrand - 500m

RER C - Bibliothèque François Mitterrand - 500m

Vélib' Station - Quai Panhard et Levassor - 500m

Gare d'Austerlitz - 2.5km

Gare de Lyon - 2.8km Orly Airport - 11km



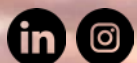
TOO HOTEL

65 RUE BRUNESSEAU, 75013 PARIS, FRANCE

☎ +33 01 78 90 79 90

✉ EVENTS@TOOHOTEL.COM

WWW.TOOHOTEL.COM



GALLERY

HOTEL
COLLECTION