

so/

PARIS





/WELCOME TO PARIS







# A hotel rooted in the world of fashion and design

The SO/ Collection has come to Paris for the first time. The new flagship of the Ennismore group's hotel collection, SO/Paris has a front row seat to the Seine.

More than just a hotel, the new location is a journey along the water and a hub of creation, where fine art and fashion collide on every floor.

# THE LOBBY

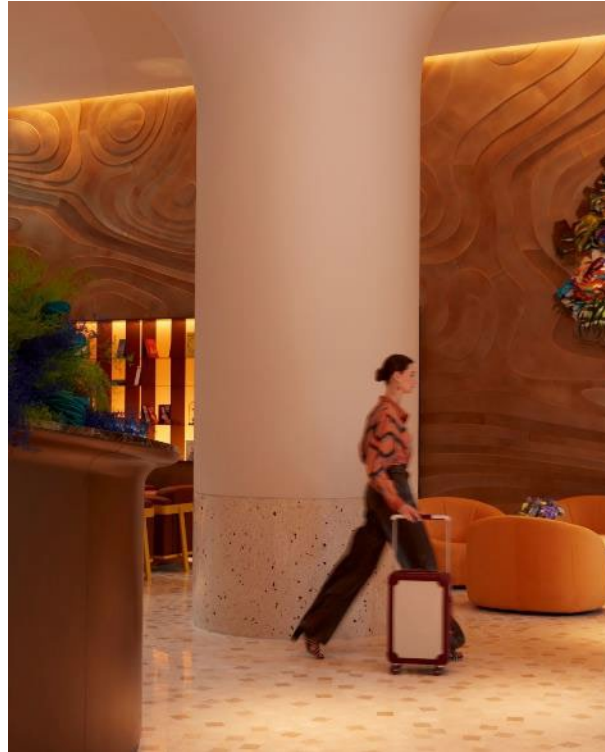






# The Lobby

The architectural firm RDAI, represented by Denis Montel, was the mastermind behind the interior spaces. Step into the lobby, and you get an immediate sense of the place: daring and unlike anything you've seen before.





THE LOBBY

# « Good Vibes » The Lobby story telling by Denis Montel



Bedecked with concentric rings that evoke rippling water on an otherwise calm surface, the front door recalls the decorative metalwork of certain Parisian buildings.

Click here for a  
virtual tour of the  
lobby of SO/ Paris



« The flooring is made of rich marble, pieced together to resemble a peacock tail, like a traditional Parisian paving stone. »



« On the side walls, staggered panels of amber glass resemble the plinths of Haussmann façades. The terrazo bases of the walls and columns play homage to the highest flood marking of the Seine from 1910. »



“The wall seems to come alive with contour lines, like a topographic map of the former Île Louviers on which the building is located. Coupled with a collaboration with Neil Beloufa, the French Algerian artist who created a circular resin masterpiece whose appearance varies depending on the observers vantage point and the light as it changes throughout the day.»





# /EXPLORE OUR ROOMS



# OUR ROOMS







# Our different Types of Rooms:



## Collection

From 25m<sup>2</sup> (270 sqft)  
From the 7<sup>th</sup> to 10<sup>th</sup> floor



King  
or Twin



Walk-in  
shower



Courtyard  
& Interior  
Gardens View



## Collection - Rooftop

From 25m<sup>2</sup> (270 sqft)  
From the 8<sup>th</sup> to the 14<sup>th</sup> floor



King  
oR Twin



Walk-in  
shower



Paris Rooftops  
View



## Iconic - Paris Skyline

From 28m<sup>2</sup> (300 sqft)  
From the 9<sup>th</sup> to the 14<sup>th</sup> floor



King  
or Twin



Walk-in  
shower



River Seine, Eiffel  
Tower and Paris  
monuments View



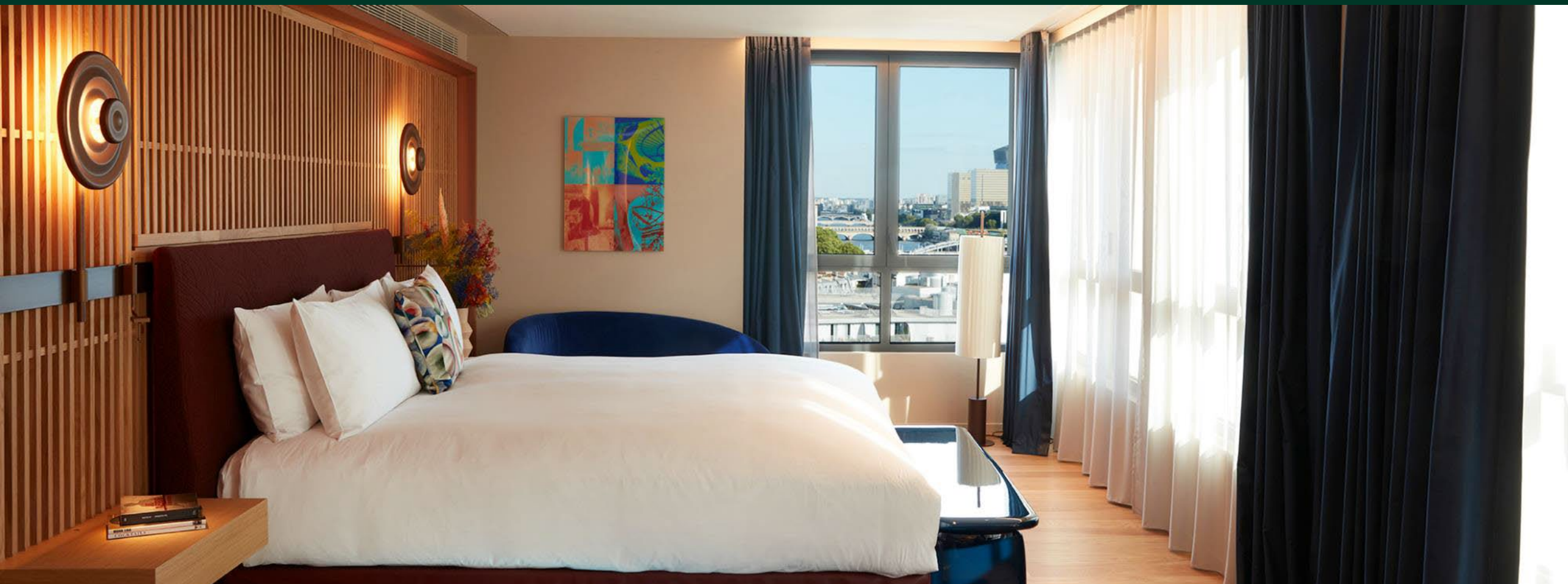


## Iconic – Paris Skyline view





# OUR SUITES





# Our different Types of Studios:



## Studio

43m<sup>2</sup> (465 sqft)  
From the 8<sup>th</sup> to 10<sup>th</sup> floor



King  
or Twin



Armchair



Walk-in  
shower &  
bathtub



Double-sink  
vanity



Wooden  
Floor



Garden &  
Courtyard  
View



## Studio Panorama

46m<sup>2</sup> (495 sqft)  
From the 11<sup>th</sup> to 13<sup>th</sup> floor



King



Living room  
space



Walk-in  
shower &  
bathtub



Double-sink  
vanity



Wooden  
Floor



Corner Suite



180°  
Panoramic  
view of Paris,  
River Seine  
view



## Studio Balcony

43m<sup>2</sup> (465 sqft)  
14<sup>th</sup> floor



King



2 Balconies



Walk-in  
shower &  
bathtub



Double-sink  
vanity



Wooden  
Floor



Corner Suite



180°  
Panoramic  
view of Paris,





## The 3 Signatures Suites of the SO/ Paris:



### L'Atelier

57m<sup>2</sup> (615 sqft)  
13<sup>th</sup> floor



King



Living room  
space with  
Sofa Bed



Walk-in  
shower-hammam  
& bathtub



Double-  
sink vanity



Wooden  
Floor



Corner Suite



Paris Rooftops  
view, Bastille  
& Sacre Coeur



### L'Atelier Seine

57m<sup>2</sup> (615 sqft)  
13<sup>th</sup> floor



King



Living room  
space with  
Sofa Bed



Walk-in  
shower-hammam  
& bathtub



Double-sink  
vanity



Wooden  
Floor



Corner Suite



View of Paris,  
River Seine &  
Eiffel Tower



### SO/ Paris Suite

85m<sup>2</sup> (915 sqft)  
14<sup>th</sup> floor



King



Separated  
Living Room



Walk-in  
shower-hammam  
& bathtub



Double-sink  
vanity



Wooden  
Floor



Corner Suite



2 balconies



Table for 4  
persons



180° Panoramic  
view of Paris,  
River Seine &  
Eiffel Tower view



# Studio Panorama







OUR SUITES

# SO Paris Suite





# /PERCHED BEAUTY



# BONNIE





# BONNIE

## PARIS NEW-YORK

*«She is beautiful and her name is Bonnie»,*  
whispered Serge Gainsbourg in his deep voice in the early 70's.

Woman of power, she dominates the entire of Paris with confidence and passion.  
Generous and happy, Bonnie bewitches and confuses.  
A bit provocative but always elegant, Bonnie evokes a retro-chic,  
comforting and lively place perched on the roof of the SO/ Paris.



### RESTAURANT

Floor 15

360° Panoramic views of Paris  
River Seine, Eiffel Tower & Monuments of Paris



### BAR

Floor 16

Rooftop of Paris  
Bastille view, French Republican Gard headquarters



### CLUB

Floor 16

Panoramic views of Paris  
River Seine, Eiffel Tower & Monuments of Paris



# BONNIE

## I LOVE (TO EAT) PARIS

---

Bonnie loves Paris, which is very grateful to her, but she also likes to cross the Atlantic to add a New York twist in the plate.

In the plate, the product is king, and it is always a product of choice. A chic Parisian brasserie spirit hovers over the gourmet and often spectacular menu, where the sea has pride of place but leaves a place of honor to a few carefully chosen meats. le recipes, festive and iconic can be shared... or not.

*Casual chic attire*







BONNIE RESTAURANT

# BONNIE RESTAURANT

At Bonnie's, life is lived in the moment. But the great classics of the 60's-70's are brought up to date in design, music and cuisine.

Under the precise and emotional guidance of Jordane Arrivetz of the Notoire agency, the panoramic view takes on cosmic allure and the disconnection borders on weightlessness. A summit tasting in a retrochic setting for lovers of the capital.

---

## FLOOR 15

360° view of Paris - River Seine - Eiffel Tower & monuments of Paris

## SURFACES

Restaurant: 208 m<sup>2</sup> - Terrace\*: 290 m<sup>2</sup>

Total: 498m<sup>2</sup>

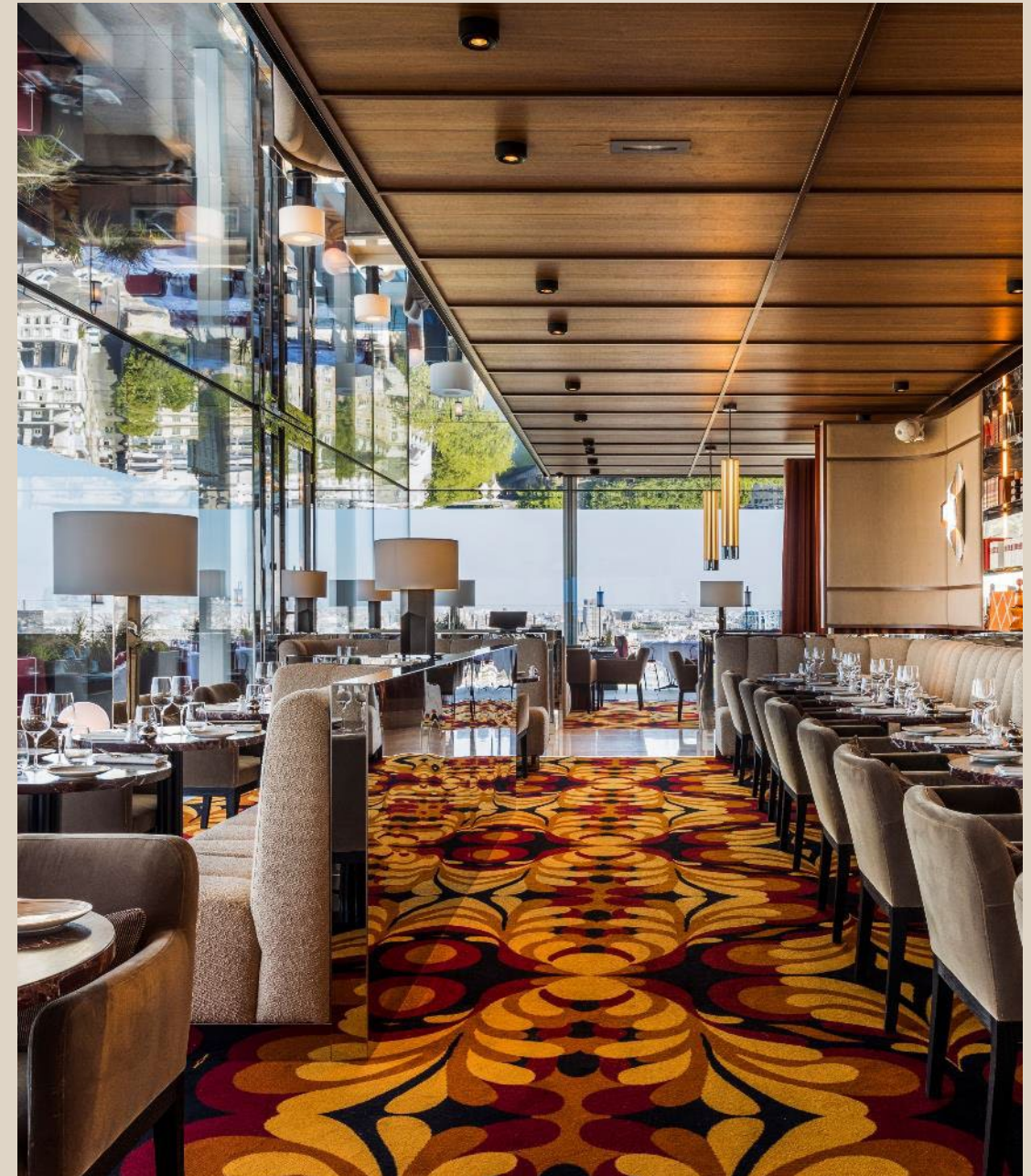
## TOTAL CAPACITY

Maximum seated meal: 105 guests

## BUYOUT FEES

42 000 € VAT included (*35 000 € VAT excluded*)

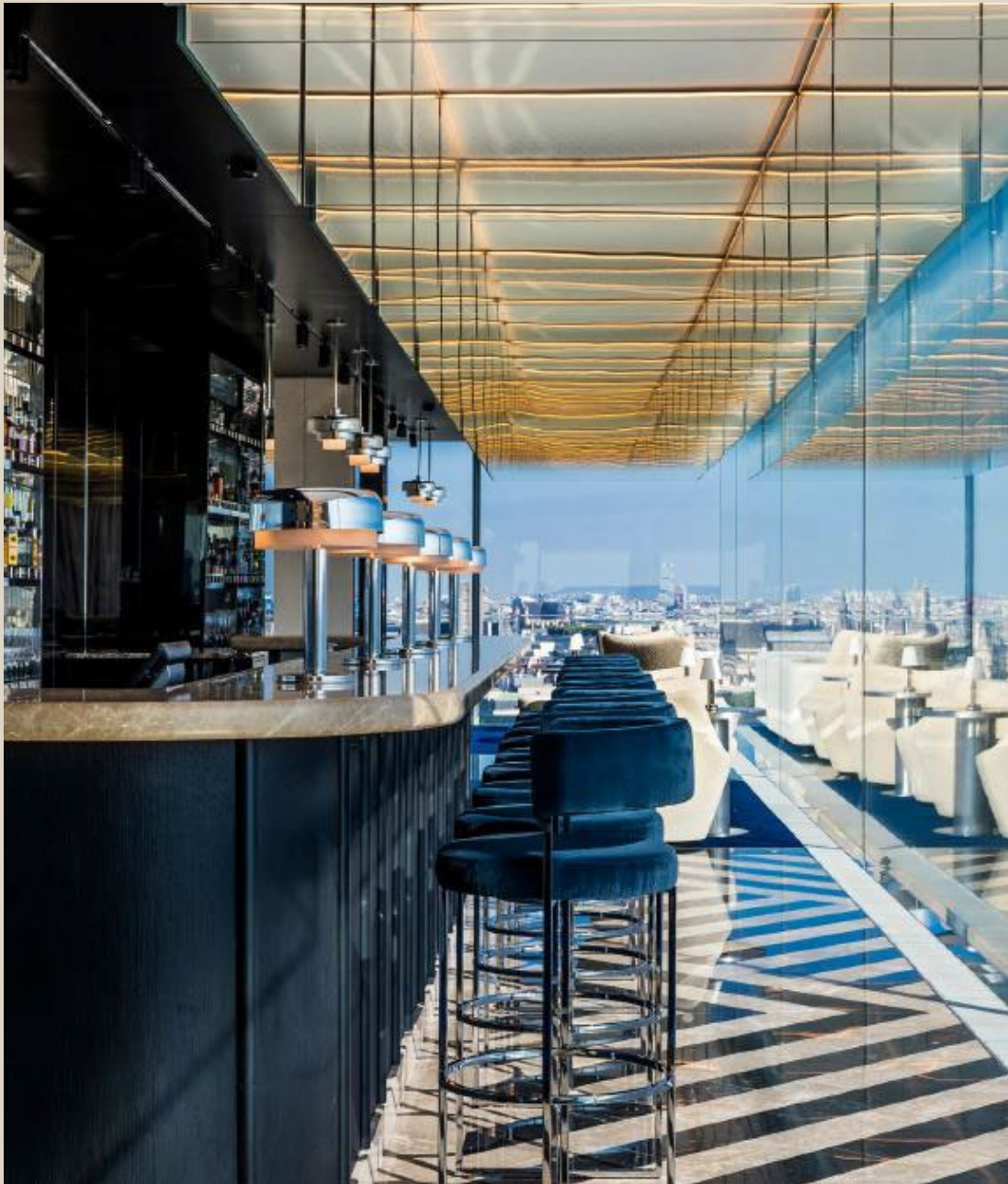
*\*subject to weather conditions*







BONNIE BAR



# BONNIE BAR

The bar's library of mirrors, black stone bar and a marbled counter reflect all the beauty around. On the floor, stripes alternate with a midnight blue carpet like the Seine at midnight. Long sofas and curly woolen armchairs meander gracefully and offer the most beautiful views of Paris.

With their heads in the clouds, against a backdrop of soul funk, groovy hits and a few Latina songs, guests come together to celebrate life with champagne, a glass of wine or a cocktail.

---

## FLOOR 16

Bastille view, Rooftop of Paris, French Republican Gard headquarters

## SURFACE

Bar: 140 m<sup>2</sup>

## TOTAL CAPACITY

Maximum seated capacity: 60 guests

## BUYOUT FEES

Daytime (until 1:45 PM): 12 000 € VAT included (*10 000 € VAT excluded*)

Evening: Upon request



BONNIE CLUB

# BONNIE CLUB

16th floor: welcome to the golden age of cool.

Bonnie opens the doors of his club every Wednesday, Thursday, Friday and Saturday to a Paris New-York vibrating to the electro-disco rhythm of the 60s and 70s.

Big brown leather sofas, large windows offering a view on all Paris, explosive cocktails, there is a bit of Studio 54 in this new Parisian temple of the night where the evenings promise to be as stunning as the view.

---

## FLOOR 16

River Seine – Eiffel Tower & monuments of Paris

## SURFACES

Club: 208 m<sup>2</sup>

## TOTAL CAPACITY

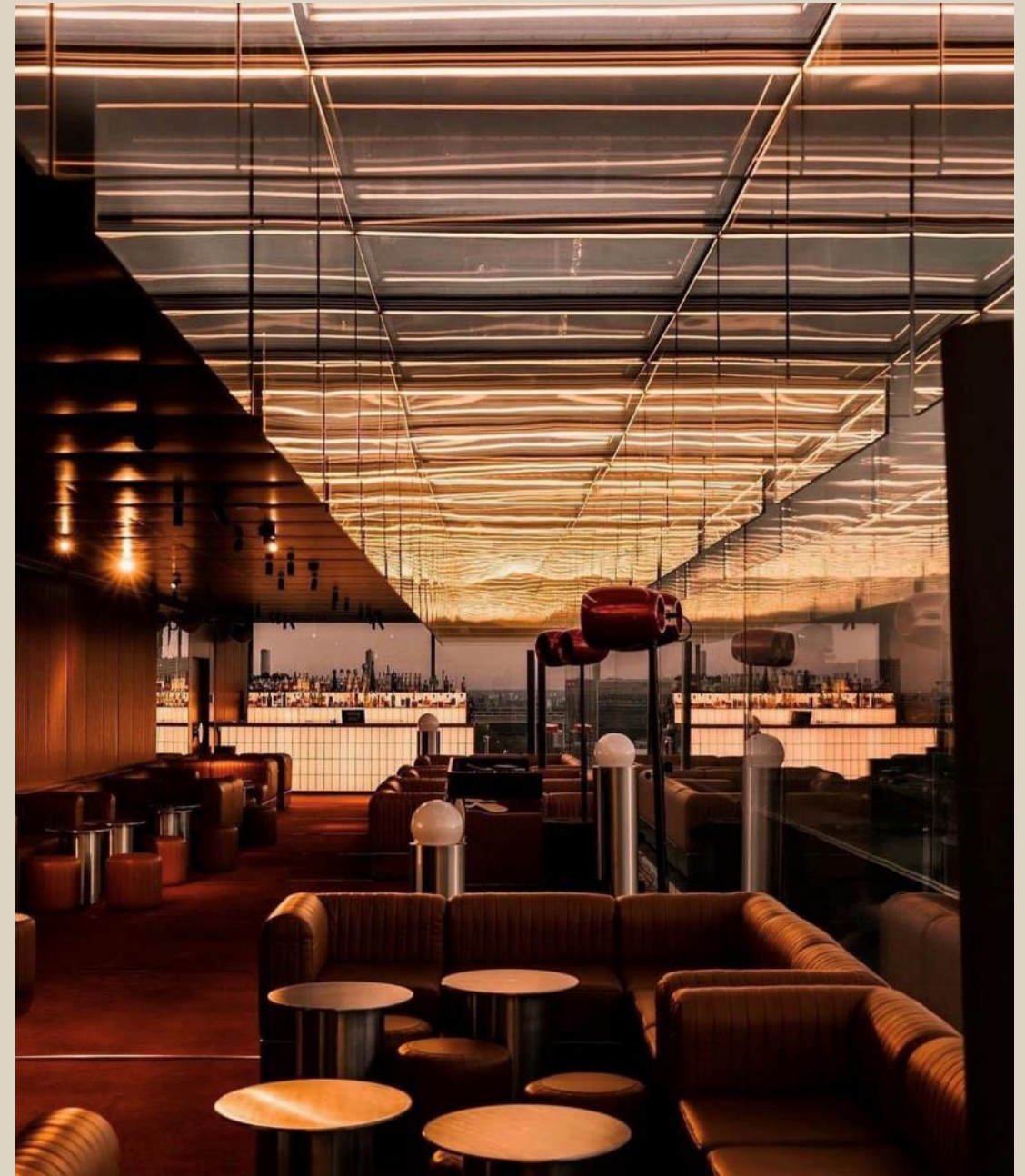
Maximum capacity: 180 guests

## BUYOUT FEES

From Sunday to Wednesday evenings only:

24 000 € VAT included (*20 000 € VAT excluded*)

Daytime: On request





# /MEETINGS & EVENTS







# Let's Meet

At SO/ Paris, it's never business as usual.

With a total of 160sqm - 1720 sqft of meeting space located on the 7th floor; our 4 meeting rooms are perfect for any for meetings, seminars, pop-up fashion shows and private events.



*View of the inner courtyard & garden of La Félicité Paris Sully-Morland complex*

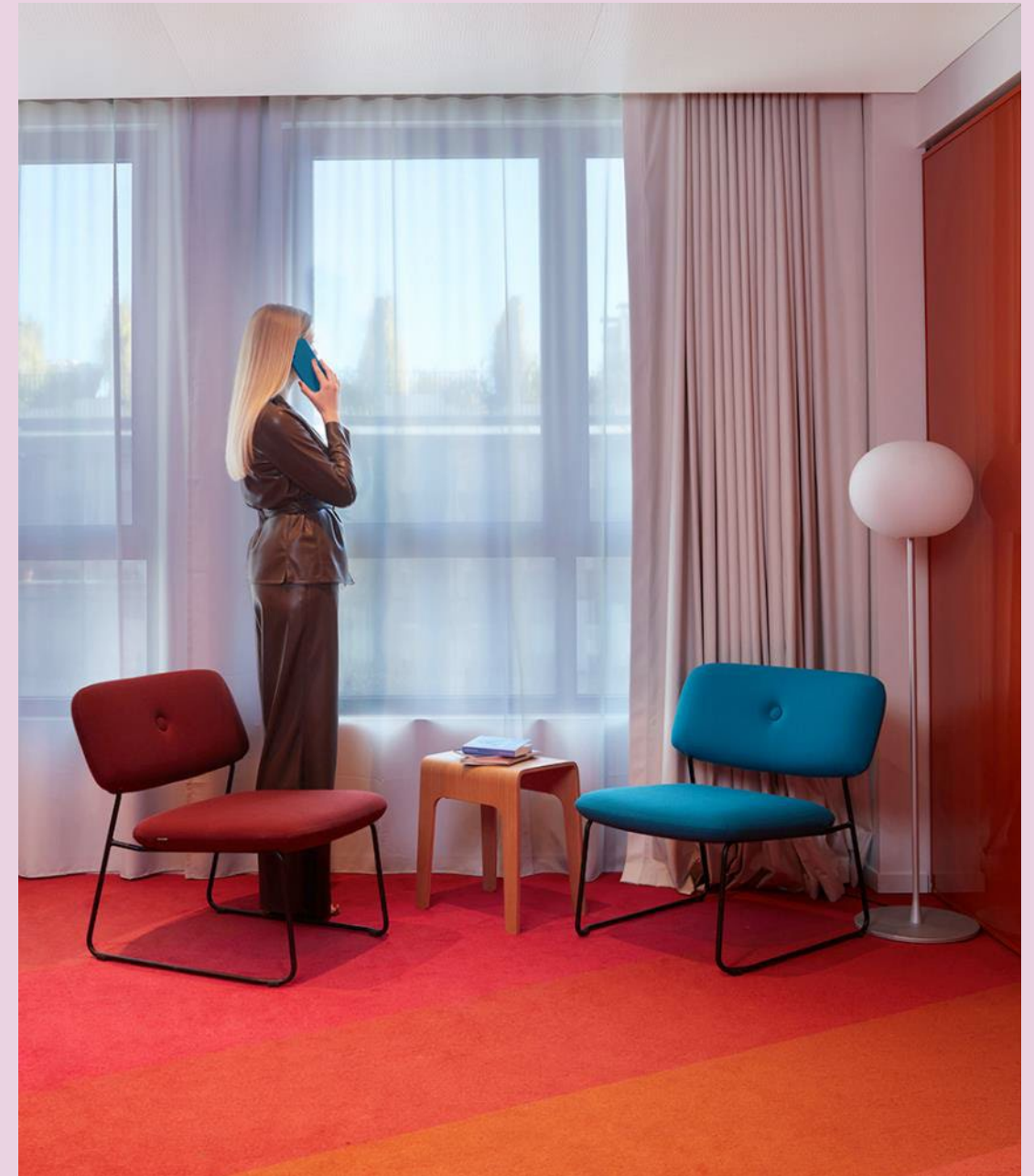


RC  
EN SCÈNE

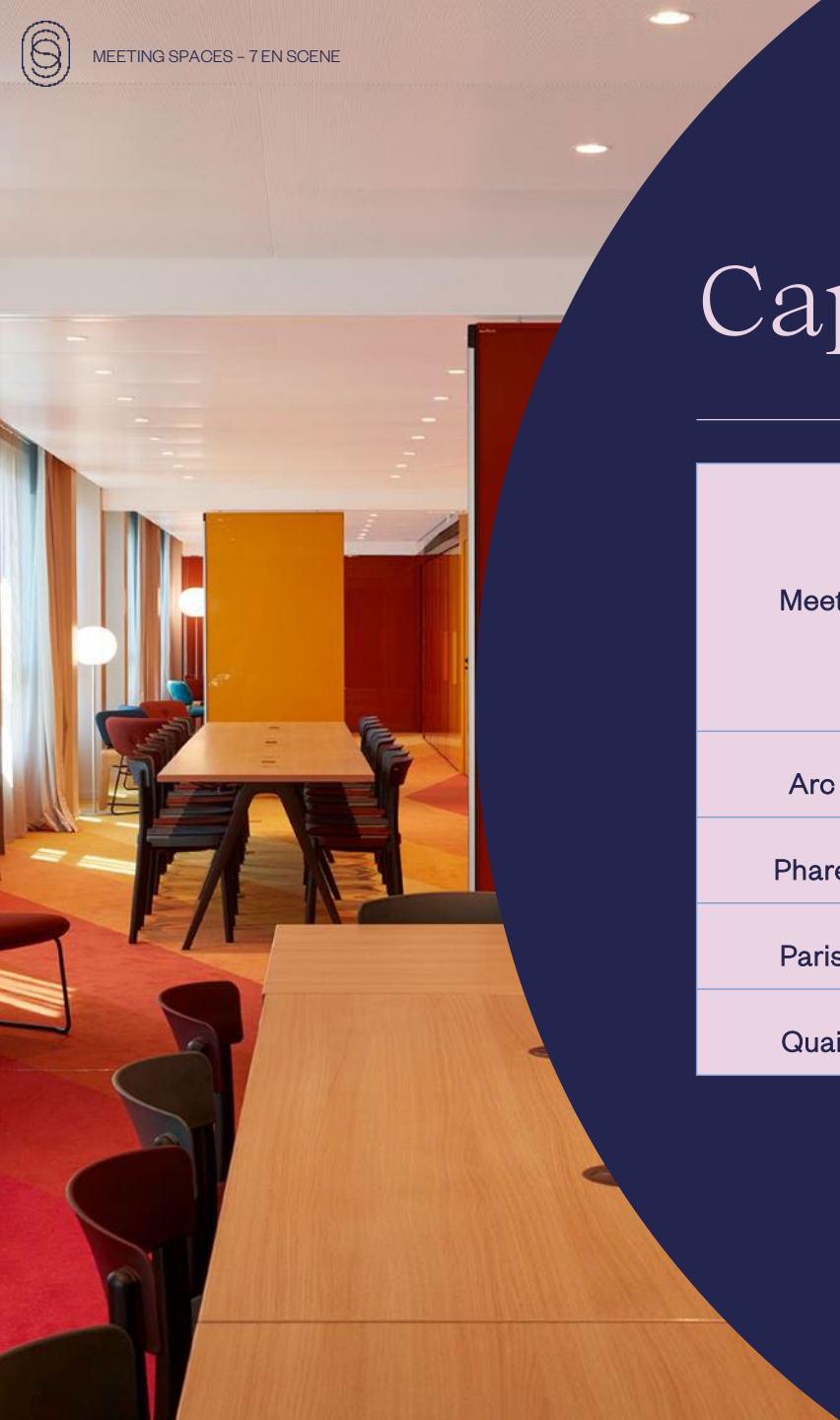
PHARE  
EN SCÈNE

PARIS  
EN SCÈNE

QUAI  
EN SCÈNE







# 7 en Scène

## Capacity chart

Meeting rooms	Sizes & Specific features				Capacities			
	Surface Area (m²)	Surface Area (sq ft)	Ground Type	Ceiling height (m)	Theatre	Boardroom	U Shape	Casual
Arc en Scène	45	485	Carpet	2m43	50	15	18	50
Phare en Scène	35	375	Carpet	2m43	10	-	12	20
Paris en Scène	35	375	Carpet	2m43	10	-	12	20
Quai en Scène	45	485	Carpet	2m43	50	15	18	50

Click here for a virtual  
tour of the 7 en Scène  
meeting spaces





# ARC EN SCÈNE

Floor Natural Daylight

7<sup>th</sup> floor Yes

Room Size TV Screen

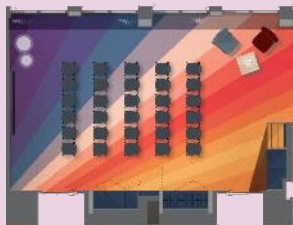
45 sqm – 485 sq ft Built-in 85-Inch TV screen

Half day rental Full day rental  
1200 € VAT included 1600 € VAT included  
(1000 € VAT excluded) (1333,33 € VAT excluded)



Boardroom

15



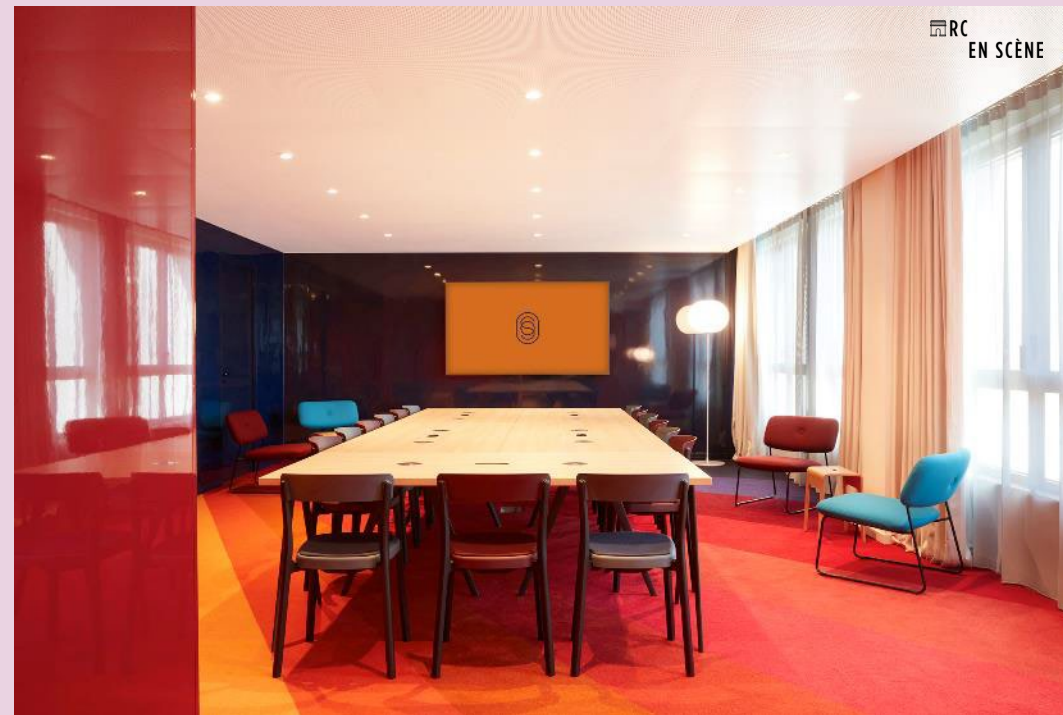
Theatre

50



Casual

50







# PHARE EN SCÈNE

Floor

7<sup>th</sup> floor

Natural Daylight

Yes

Room Size

35 sqm - 375 sq ft

TV Screen

Built-in 75-Inch TV screen

Half day rental

1 000 € VAT included  
(833,33 € VAT excluded)

Full day rental

1 400 € VAT included  
(1166,67 € VAT excluded)



U Shape

12



Casual

20





# PARIS EN SCÈNE

Floor

7<sup>th</sup> floor

Natural Daylight

Yes

Room Size

35 sqm – 375 sq ft

TV Screen

Built-in 75-Inch TV screen

Half day rental

1000 € VAT included  
(833,33 € VAT excluded)

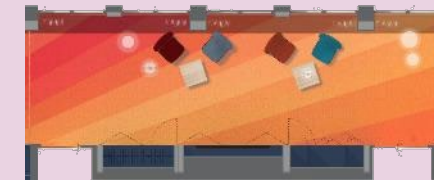
Full day rental

1400 € VAT included  
(1166,67 € VAT excluded)



U Shape

12



Casual

20





# QUAI EN SCÈNE

Floor	Natural Daylight
7 <sup>th</sup> floor	Yes

Room Size	TV Screen
45 sqm - 485 sq ft	Built-in 85-Inch TV screen

Half day rental	Full day rental
1 200 € VAT included	1 600 € VAT included
(1 000 € VAT excluded)	(1 333,33 € VAT excluded)



Boardroom  
15



Theatre  
50



Casual  
50



# Your Full Day Delegate Package

*From 9AM until 6PM*

## The meeting

At disposal, your meeting room with existing set-up.  
*Specific set-up upon request*

## The coffee breaks (morning & afternoon)

Mineral waters  
Fresh fruit juices  
Coffee, Selection of teas

### Morning break:

Assortment of pastries (2 per person)  
Fruit salad

### Afternoon break:

Assortment of mignardises (2 per person)  
Fruit salad

## The services included

- Cloakroom in your meeting room
- Built-in 85-Inch TV screen with ClickShare system
- Wireless internet (WiFi)

## The lunch (by choice)

*Menus created by our Chef Djayi Tounkara from our signature restaurant Bonnie*

**Option 1 – Bonnie Restaurant** (up to 20 delegates)  
3 courses lunch with classic range drinks package  
Unique menu to be chosen before the event

**From 205 € per person**  
*Based on "Le Clyde" menu*

*Supplement "Le Paris" Menu + 15 €*  
*Supplement "Le New York" Menu + 35 €*  
*Supplement "Bonnie" Menu + 75 €*

**Option 2 – Bonnie Bar** (from 20 delegates)

### **Finger food menu**

12 pieces per person with classic range drinks package  
Set menu to be chosen before the event

**From 235 € per person**

### **Private cocktail lunch**

18 pieces per person with classic range drinks package  
Set menu to be chosen before the event

**From 260 € per person**

*Billing minimum : 10 delegates.*

*All rates are in Euros, per person and include VAT*



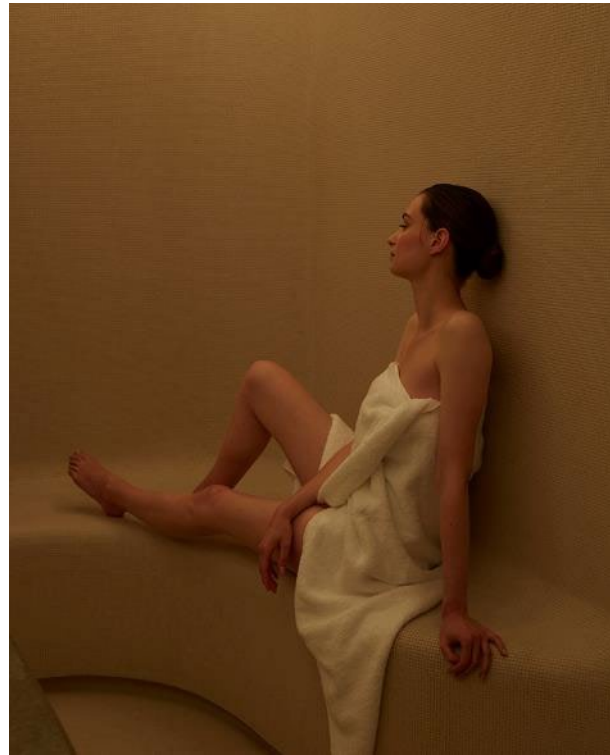


/RELAX &  
REWIND



# Spa & Wellness

Our 5-star hotel offers a complete wellness experience with its Maison CODAGE Spa and direct access Ô Zenhit sport club, located in La Felicité complex.







SPA & WELLNESS

# Spa & Wellness





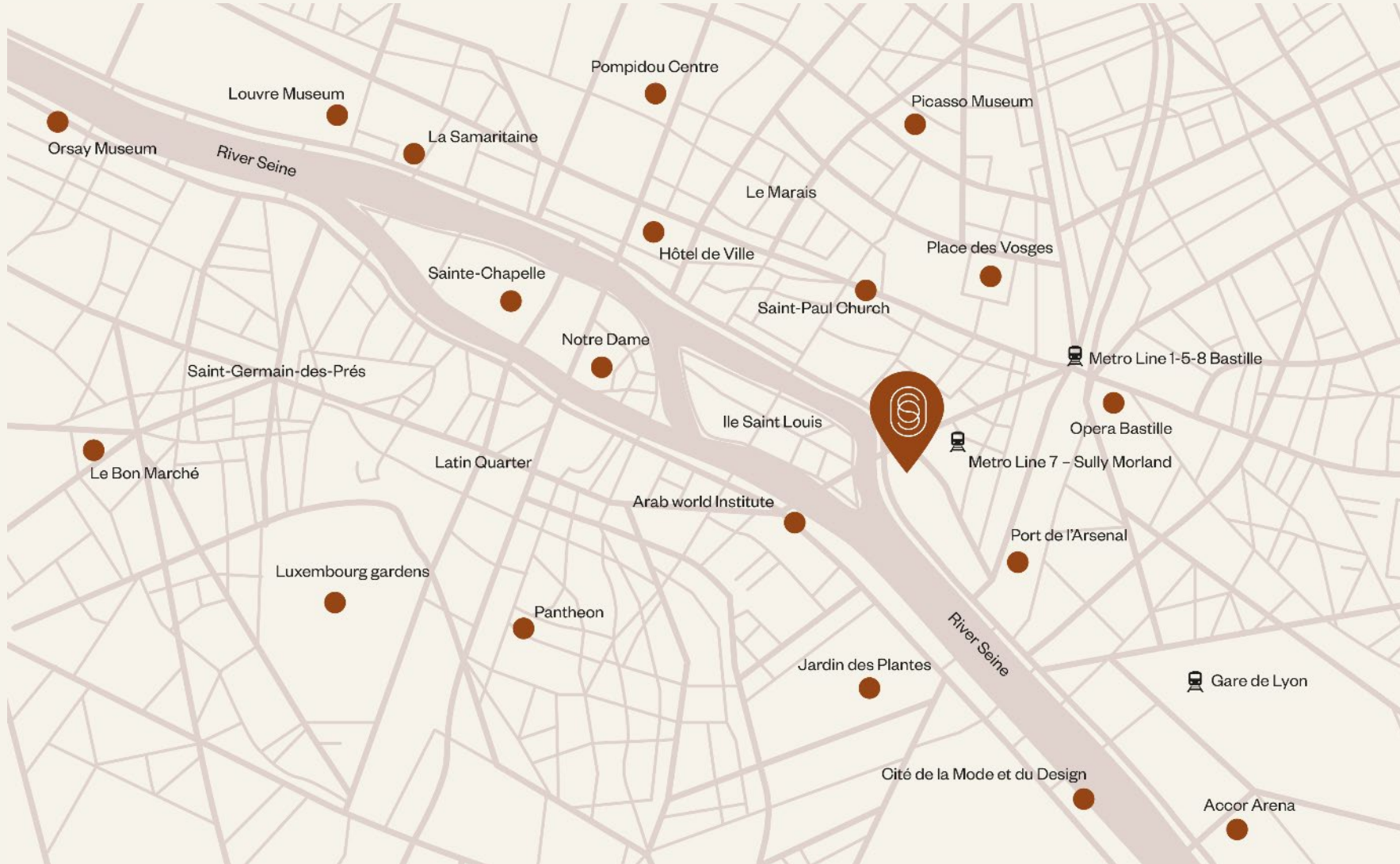
# /THE PARISIAN LIGHTHOUSE







# WHERE TO FIND US?



## Subway station

Sully-Morland (line 7) at 150 m

Place de la Bastille at 700 m (subway lines 1, 5 et 8)

## Buses

Lines 67, 72, 86 & 87 lead you all over Paris

## Train station

« Gare de Lyon » is located 14 minutes walking distance with a good wheeled suitcase

## By plane

Paris Orly Airport is 18km away

Paris CDG Airport is 30km away

## Nearest parking

Parking Indigo Paris Pont Marie

## SO/ PARIS

10 rue Agrippa d'Aubigné

75004 Paris, France



10 rue Agrippa d'Aubigné  
75004 Paris, France  
Tel : +33 (0)1 78 90 74 00  
soparis@so-hotels.com  
s o p a r i s . c o m

