

SO/

PARIS



OUR BEDROOMS

162 Bedrooms // Striking views over the Paris rooftops, the Seine, and the capital's landmarks
« 7en Scène » Meeting Hub // Bonnie Restaurant-Bar-Club by Paris Society // Maison CODAGE Spa

162 Rooms & Suites

Elegant, warm and vibrant, the rooms and suites of SO/ PARIS embody our credo:
To redefine Parisian luxe with style. Designed by RDAI.

COLLECTION KING OR TWIN

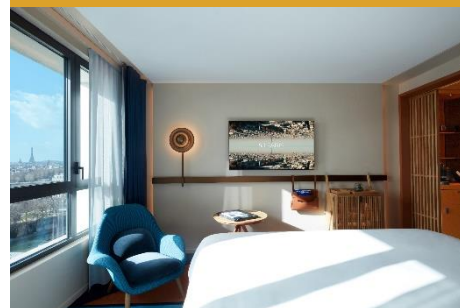
From 25m² (270 sqft)
Courtyard and garden view



COLLECTION
ROOFTOP VIEW
From 25m² (270 sqft)
Paris rooftops view



ICONIC
PARIS SKYLINE VIEW
From 28m² (300 sqft)
River Seine and Eiffel Tower view



STUDIO

43m² (465 sqft)
Courtyard and garden view



STUDIO PANORAMA

46m² (495 sqft)
River Seine and Eiffel Tower view



STUDIO BALCONY

43m² (465 sqft) – 2 balconies
River Seine and Eiffel Tower view



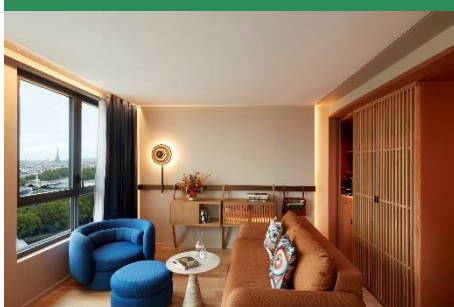
L'ATELIER

57m² (615 sqft)
Paris rooftops view - Bastille



L'ATELIER SEINE

57m² (615 sqft)
River Seine and Eiffel Tower view

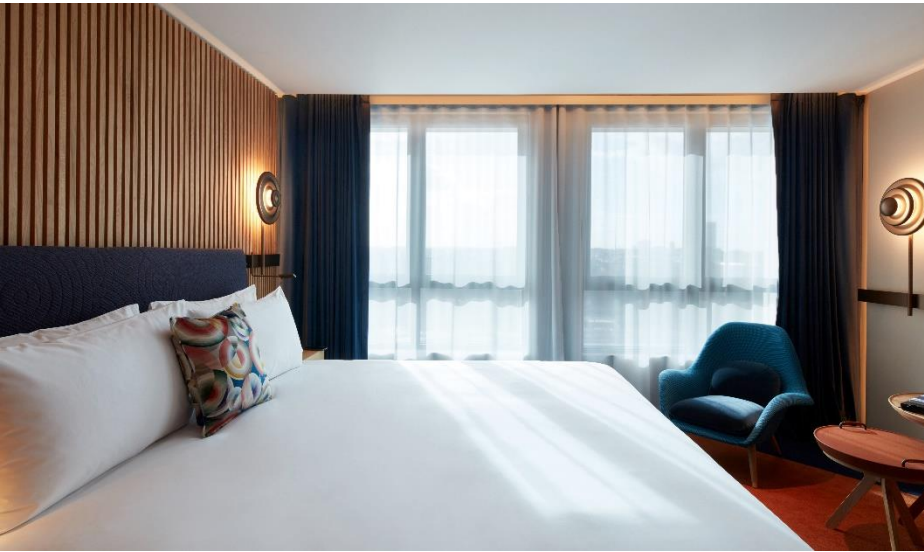


SO PARIS SUITE

85m² (915 sqft) – 2 balconies
River Seine and Eiffel Tower view



Collection – King or Twin



- From 25m² (270 sqft)
- 7-10th floor
- 1 King or 2 single beds
- Courtyard and Garden view

Looking for a calm and spacious room in the heart of the capital? Your search is over, as SO/ Paris has exactly what you want and need.

On the 7th to 10th floors, our 25m² Collection rooms are airy havens of peace, thanks to a wall of windows overlooking the courtyard and interior gardens of the complex. The palette here contrasts blue with coral or saffron tones. Choose from

a king-size bed or two singles, fitted with luxurious linens and offering exceptional comfort night after night.

From the wall of wood to the trellis screen separating the bathroom from the bed area, natural accents add to the warmth of this elegant space while reinforcing the maritime theme at the heart of this groundbreaking Paris hotel.



Amenities of our Bedrooms

CODAGE Paris bath products

Walk-in shower

Clothes steamer

Minibar with complimentary non-alcoholic beverages

Nespresso® machine & selection of teas

55" 4K Ultra HDTV

AeroBull Bluetooth speaker

Free Highspeed WiFi

Collection - Rooftop View



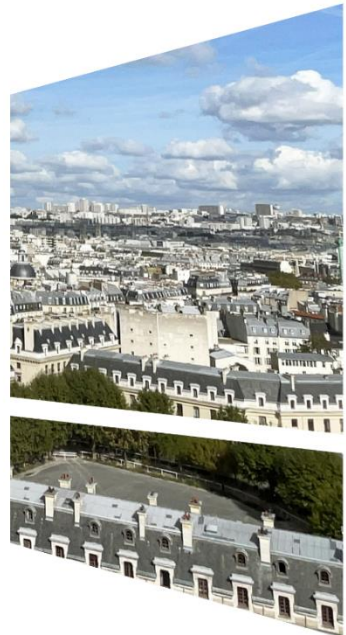
- From 25m² (270 sqft)
- 8-14th floor
- 1 King or 2 single beds
- Paris Rooftops view



Throughout your stay in the 4th arrondissement, wake up every morning to the spectacular view of the Paris sky and rooftops. On the 8th to 14th floors, nothing gets in the way between you and the matchless cityscape of the City of Light.

While large picture windows create the perfect backdrop for

your Collection room, it is the 25m² interior – filled with comfort and design – that takes center stage. Discover a combination of whimsical elegance, scintillating colors and attention to detail, where daylight plays with the curves, spaces and cozy ambiance of your room.

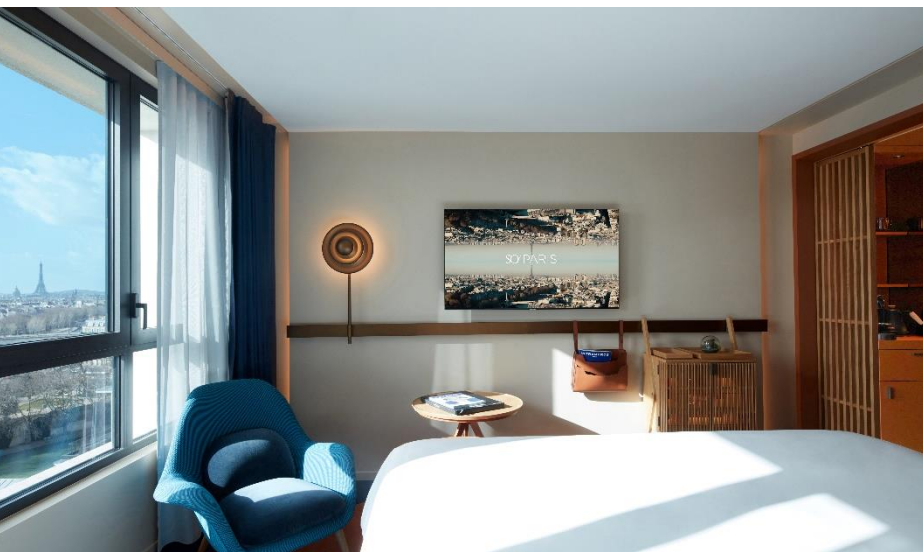


Amenities of our Bedrooms

CODAGE Paris bath products
Walk-in shower
Clothes steamer
Minibar with complimentary non-alcoholic beverages

Nespresso® machine & selection of teas
55" 4K Ultra HDTV
AeroBull Bluetooth speaker
Free Highspeed WiFi

Iconic - Paris Skyline View



- From 28m² (300 sqft)
- 9-14th floor
- 1 King or 2 single beds
- River Seine and Eiffel Tower view

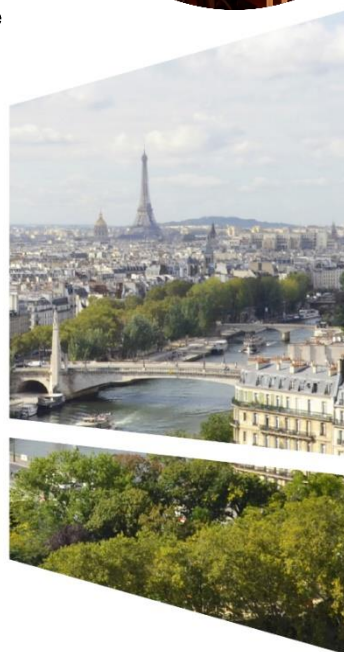


Our Iconic - Paris Skyline view rooms with panoramic views of the River Seine and Paris monuments invite you to experience the perfect romantic stay in Paris.

Not even the décor's unique personality can rival your view of the capital's legendary monuments, a

living tableau as revealed by the oversized windows

Before you are the bridges that span the Seine, while the Eiffel Tower soars high above the city that stretches out from your feet, promising adventures and indelible memories.



Amenities of our Bedrooms

CODAGE Paris bath products

Walk-in shower

Clothes steamer

Minibar with complimentary non-alcoholic beverages

Nespresso® machine & selection of teas

55" 4K Ultra HDTV

AeroBull Bluetooth speaker

Free Highspeed WiFi



- 43m² (465 sqft)
- 8-10th floor
- 1 King or 2 single beds
- Courtyard and Garden view



Available with one king-size or two single beds, this 43m² junior suite serves as your veritable Parisian pied-à-terre.

After a long day of work or meetings in the capital, you will have the pleasure of regrouping in this inviting, light-filled space that

overlooks the complex's lush gardens.

Parquet flooring, leather armchairs, wooden walls and dividers... these and other natural notes create a universe that is both cozy and energizing, unexpected qualities in the heart of Parisian effervescence.



Amenities of our Studios

CODAGE Paris bath products
Separate bathtub and walk-in shower
Double-sink vanity
Japanese toilet
Yoga mat and free weights

Minibar with complimentary non-alcoholic beverages
Nespresso® machine & selection of teas
65" 4K Ultra HDTV
AeroBull Bluetooth speaker
Free Highspeed WiFi

Studio Panorama



– 46m² (495 sqft)

– 11-13th Floor - 1 King

– 180° Panoramic view of Paris, River Seine & Eiffel Tower view



This high-floor corner junior suite offers a breathtaking view of Paris and its renowned landmarks.

Throughout the 46m² space, you are immersed in this incredible décor with lofty picture windows, from the bedroom to the lounge and work areas.

Oh, let's not forget the tub... in your panoramic studio, you can soak in views of the Seine and Eiffel Tower while taking a bath.

Once again, SO/ Paris comes through with another unrivaled experience!



Amenities of our Studios

CODAGE Paris bath products
Separate bathtub and walk-in shower
Double-sink vanity
Japanese toilet
Yoga mat and free weights

Minibar with complimentary non-alcoholic beverages
Nespresso® machine & selection of teas
65" 4K Ultra HDTV
AeroBull Bluetooth speaker
Free Highspeed WiFi

Studio Balcony



- 43m² (465 sqft)
- 14th floor
- 2 balconies
- 1 King
- 180° Panoramic view of Paris, River Seine view

This 43m² corner junior suite utterly captivates with its 2 balconies offering panoramic view of Paris starring the Seine and the Eiffel Tower

On the 14th floor of the hotel, perched high above the riverbank, you have front-row seats as the sun rises and sets over the capital,

from Île de la Cité all the way to the silhouettes of La Défense's skyscrapers in the distance.

Have a seat in the comfortable lounge area, or spend time on one of the two balconies and let Paris work its magic on you.



Amenities of our Studios

CODAGE Paris bath products
Separate bathtub and walk-in shower
Double-sink vanity
Japanese toilet
Yoga mat and free weights

Minibar with complimentary non-alcoholic beverages
Nespresso® machine & selection of teas
65" 4K Ultra HDTV
AeroBull Bluetooth speaker
Free Highspeed WiFi



- 57m² (615 sqft)
- 13th floor
- 1 King & Sofabed
- Paris Rooftops view, Bastille & Sacre Coeur

L'Atelier is a luxurious corner suite. Its five windows overlooking the rooftops of Paris make the space feel like an artist's studio in Montmartre. Without a doubt, the room's brilliant inspiration came from the Génie de la Bastille (the Spirit of Freedom) perched atop the Bastille column, visible from the bed.

Whether for a relaxing stay or a fun break, you can tailor-make your Parisian getaway in the 57m² Atelier featuring a king bed, spacious sitting area with sofa bed, and a bathroom with hammam shower and standalone tub.



Amenities of our Atelier

CODAGE Paris bath products
 Separate bathtub and hammam shower
 Double-sink vanity
 Japanese toilet
 Yoga mat and free weights

Minibar with complimentary non-alcoholic beverages
 Nespresso® machine & selection of teas
 65" 4K Ultra HDTV
 Seating area with sofabed
 Free Highspeed WiFi



- 57m² (615 sqft)
- 13th floor
- 1 King & Sofabed
- View of Paris, River Seine & Eiffel Tower view

Measuring 57m², L'Atelier Seine is a sublime panoramic corner suite with views of the Seine, Eiffel Tower and all of Paris. Situated on the 13th floor, this space is filled with light flooding in from five oversized windows – making your stay even more unforgettable.

At 40 meters (some 130 feet) off the ground, you sleep on a cloud in

your king-size bed and spend quality time in the lounge facing the open sky. When you're in the mood for a private spa experience, all you have to do is to step into your bathroom equipped with a hammam shower, standalone tub and high-quality products by CODAGE Paris.



Amenities of our Atelier

CODAGE Paris bath products
 Separate bathtub and hammam shower
 Double-sink vanity
 Japanese toilet
 Yoga mat and free weights

Minibar with complimentary non-alcoholic beverages
 Nespresso® machine & selection of teas
 65" 4K Ultra HDTV
 Seating area with sofabed
 Free Highspeed WiFi

So Paris Suite



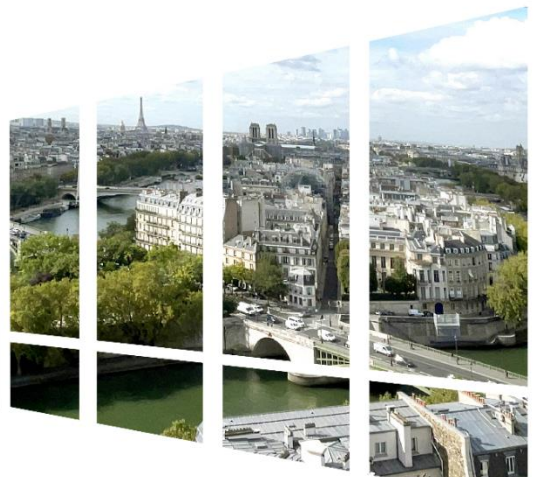
- 85m² (915 sqft)
- 14th floor
- 2 Balconies
- 1 King
- 180° Panoramic view of Paris, River Seine & Eiffel Tower view

Who hasn't dreamed of staying in a vast panoramic suite in the heart of Paris? That dream becomes a reality on the 14th floor of the hotel. From here, an unsurpassed view of the Seine, Eiffel Tower and other beautiful monuments of the capital are yours.

In this 85m² corner suite, you have the opportunity to take in the spectacular vista from multiple spaces and angles. Listen to your playlist in the separate lounge,

socialize in the dining area with its table for four, or simply admire the beauty of the City of Light from one of two balconies.

With its highly distinctive décor, generous living spaces and wellness amenities in the spa bathroom, the most luxurious accommodation of SO/ Paris is also one of the most gorgeous suites in all of Paris!



Amenities of our SO Paris Suite

2 balconies

Separate living room with sofa

Dining table for 4 guests

CODAGE Paris bath products

Hammam shower and separate bathtub

Double-sink vanity

Japanese toilet

Yoga mat and free weights

Minibar with complimentary non-alcoholic beverages

Nespresso® machine & selection of teas

65" 4K Ultra HDTV

Highspeed WiFi

