



MONDRIAN

CANNES

75 Rooms & Suites – In the heart of the Croisette – Sea view –
4000m² garden – Private Beach Hyde Beach Cannes – Restaurant & Bar

PALME D'OR FOR THE VIEW

Mondrian Cannes' location is beyond your wildest dreams.

Right in the middle of La Croisette, two-minute walk from the Palais des Festivals, the 5-star hotel offers 75 rooms and suites.

Perfectly located near the many luxury stores and restaurants, it also allows you to immerse yourself in the heart of local life and Cannes' events.

Mondrian Cannes offers a unique view of the infinite blue of the Mediterranean, intensified by its gardens in the foreground, unique on the Croisette.



WHERE TO FIND US

NCE

Airport int. 1 - IATA Code
20 km / 12.43 mi
35 min by car

CANNES Train station S.N.C.F.

500 m / 0.31 mi
5 min by car

42

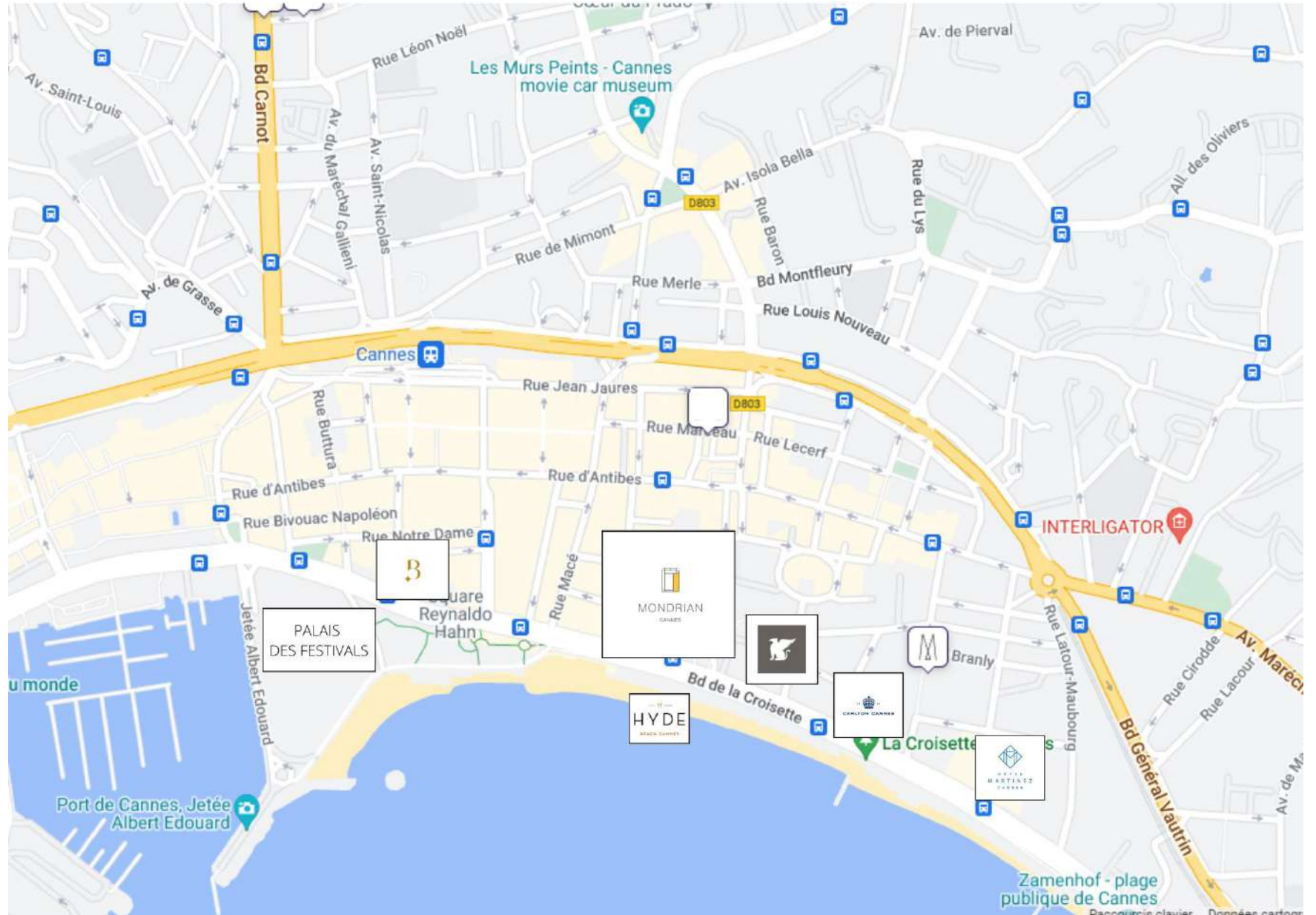
Highway exit
5 km / 3.11 mi
10 min by car

CANNES MANDELIEU

Airfield / Héliport
6.5 km / 4.04 mi
15 min by car

45 Boulevard De La Croisette
06400 CANNES FRANCE

GPS:43.5511322, 7.0244327



LOBBY

The hall creates a link with the exterior. It is designed as a planted walkway, where the perspective extends to the sea. It distributes the lobby, the bar and the 62-seat restaurant, where the influence of tropical modernism meets the Mediterranean. The compositions of the carpets, the formats of the benches and the woodwork dialogue with the shades of blue, the marine motifs and the zenithal work of the artist Mathilde de l'Écotais.



OUR ROOMS

Mondrian Cannes offers 75 rooms and suites, the smallest of which measures 36 square metres. Here, the rooms and suites are large with huge balconies and bay windows, bathed in the Riviera's stunning golden light.



OUR DIFFERENT ROOM CATEGORIES



JUNIOR SUITE

40m² | From 1st to 6th floor



King Bed or Twin



Shower or bathtub



City view



Desk



Lounge area



DELUXE ROOM

36m² | 11th floor



King Bed or Twin



Shower or bathtub



City view



Desk



DELUXE JUNIOR SUITE

40m² | From 7th to 10th floor



King Bed or Twin



Shower or bathtub



City view



Desk



Lounge area

OUR DIFFERENT ROOM CATEGORIES



PRESTIGE ROOM
36m² / 7m² terrace | From 1st to 6th floor

 King Bed or Twin

 Shower or bathtub

 Sea view

 Desk

 Terrace



PRESTIGE SUPERIOR ROOM
36m² / 7m² terrace | From 7th to 10th floor

 King Bed or Twin

 Desk


 Shower or bathtub

 Terrace

 Sea view




PANORAMIC ROOM
35m² / 45m² terrace | 11th floor

 Queen Bed

 Terrace

 Shower and bathtub

 Private spa

 Sea view

 Desk

OUR DIFFERENT ROOM CATEGORIES



SIGNATURE SUITE

65m² / 20m² de terrasse | 11th floor



King Bed or Twin



Shower and bathtub



Sea view



Desk



Terrace



SERENITY SUITE

45m² / 20m² terrace | 11th floor



Queen bed



Shower and bathtub



City view



Desk

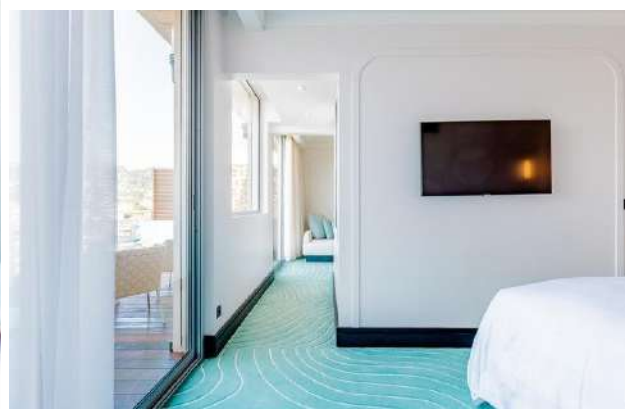
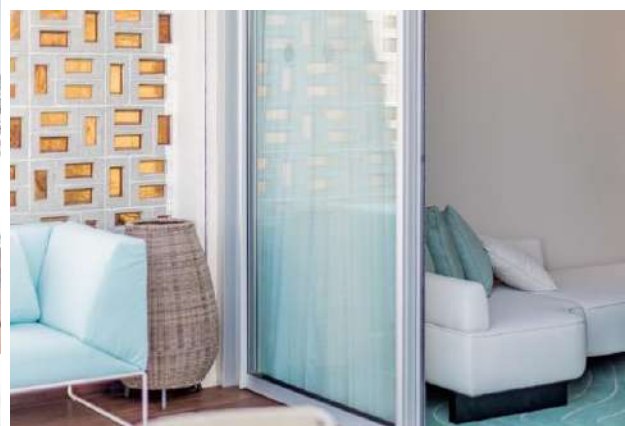


Terrace

PANORAMIC ROOM



SERENITY SUITE



SIGNATURE SUITE



Mr Nakamoto
MONDRIAN

A contemporary seafood restaurant that combines the classic tradition of the great New York restaurants of the 1950s with a subtle dose of Japanese flavor.

Open every day
62 seats inside
106 outdoor seats



THE GARDEN



EST. **H** 2005

HYDE

BEACH CANNES

Located on the legendary Boulevard de la Croisette,
Hyde Beach Canes is one of the must-see beaches in Cannes.

Warm atmosphere, with accents of dolce vita thanks to its Italian cuisine, attentive service, relaxing during the day and more animated in the evening, Hyde beach is also the ideal place to celebrate an event.



PRIVATE BEACH



PRIVATE BEACH

The Hyde Beach Cannes is perfectly located to celebrate events. It is also an ideal place to organize lunches, cocktails or dinners. The spaces can be fully privatized or semi-privatized.

Open every day in season
160 seats
Up to 800 people for cocktails

DJ set in summertime
Music allowed until 2am



THE GARDEN

Mondrian Cannes offer a unique and unparalleled experience. Its expansive garden overlooking the sea is a one-of-a-kind gem on the Croisette. With a breathtaking view of the sky, palm trees, and sea, it's the perfect place to relax and unwind. Additionally, the garden's popularity makes it a prime location for hosting a wide range of events.



THE GARDEN

4000m² of garden

Car launch / test drive

Private event

Fashion show

Roof top screen

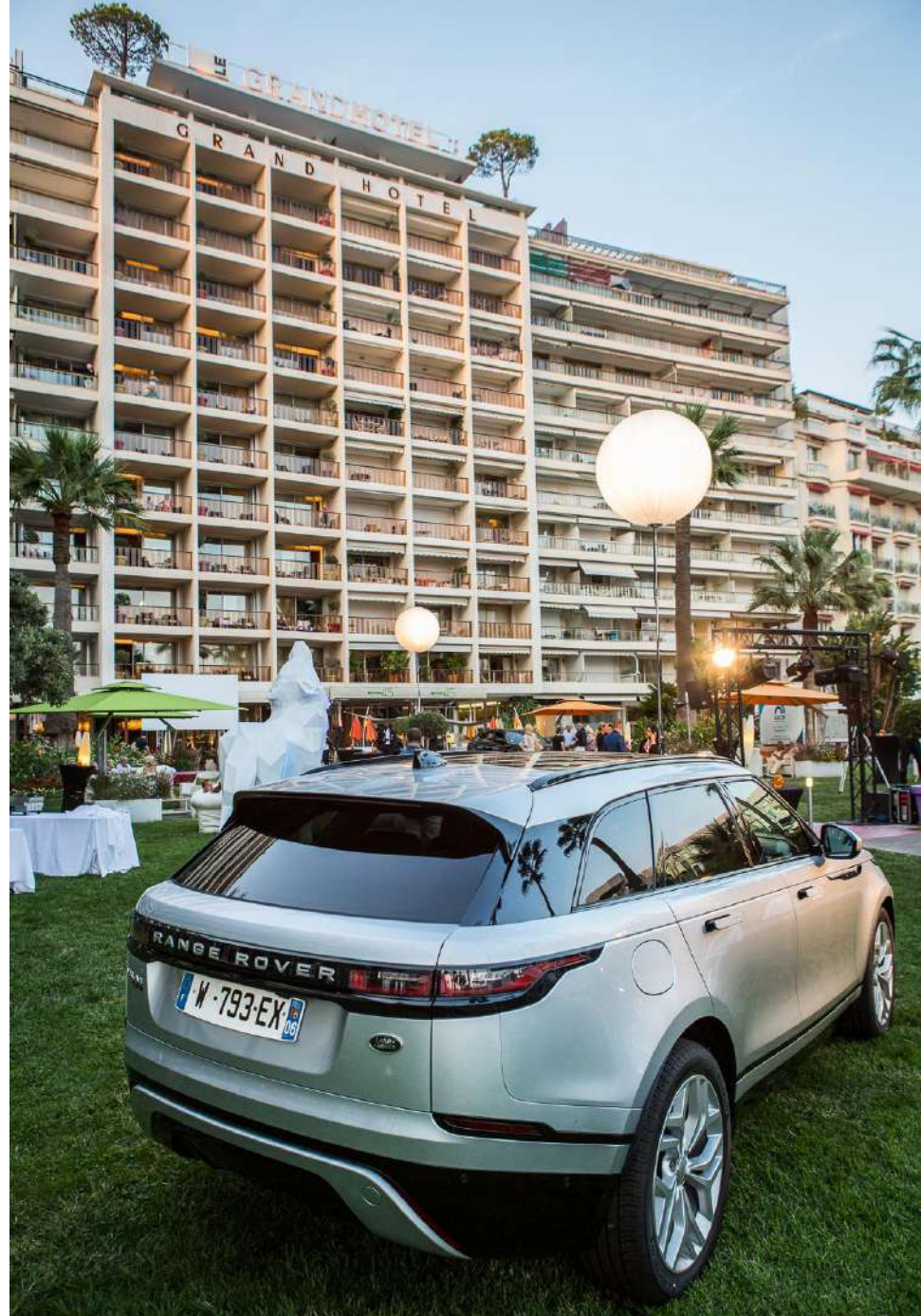
Advertising display

Cocktail

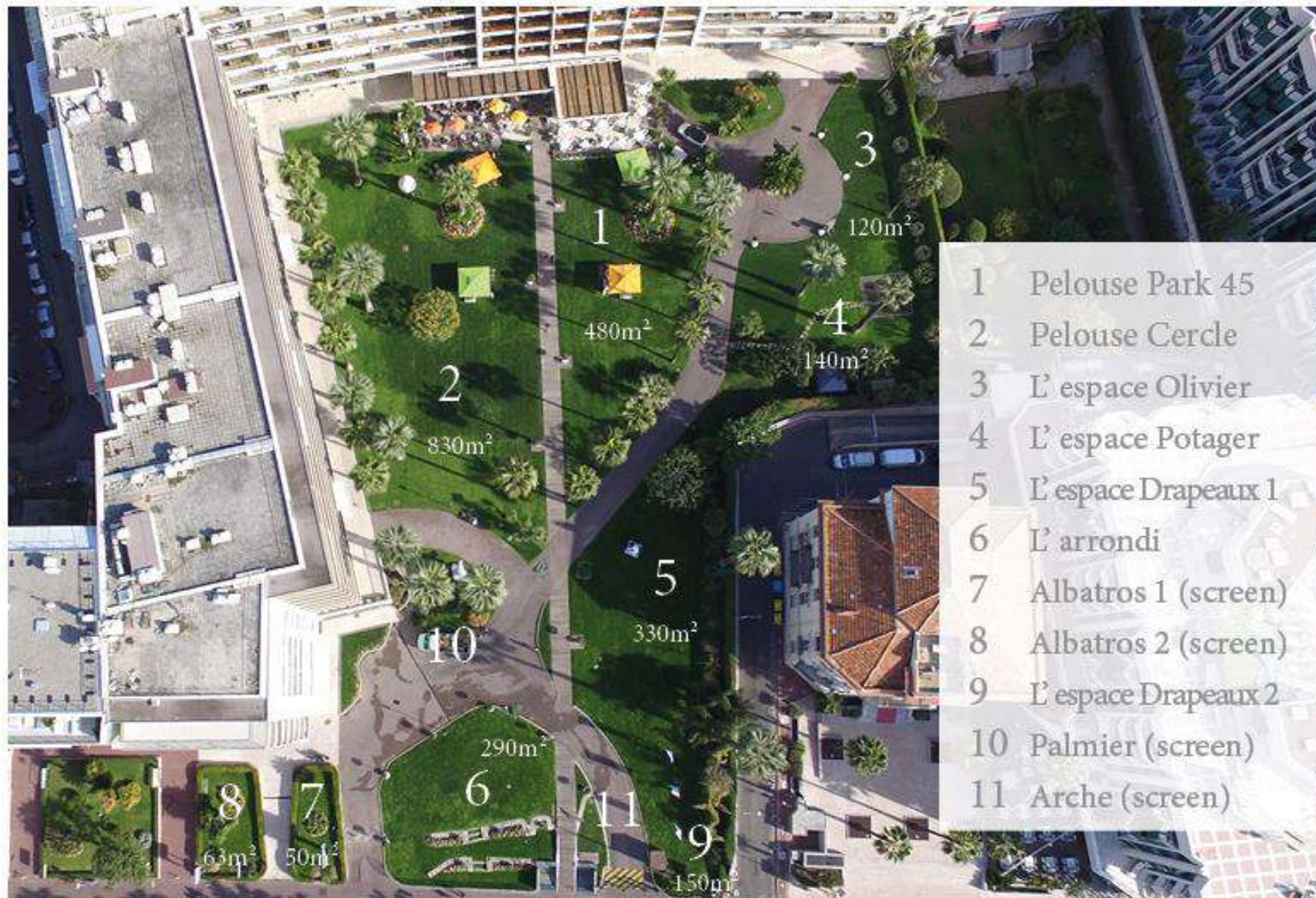
Advertising structure



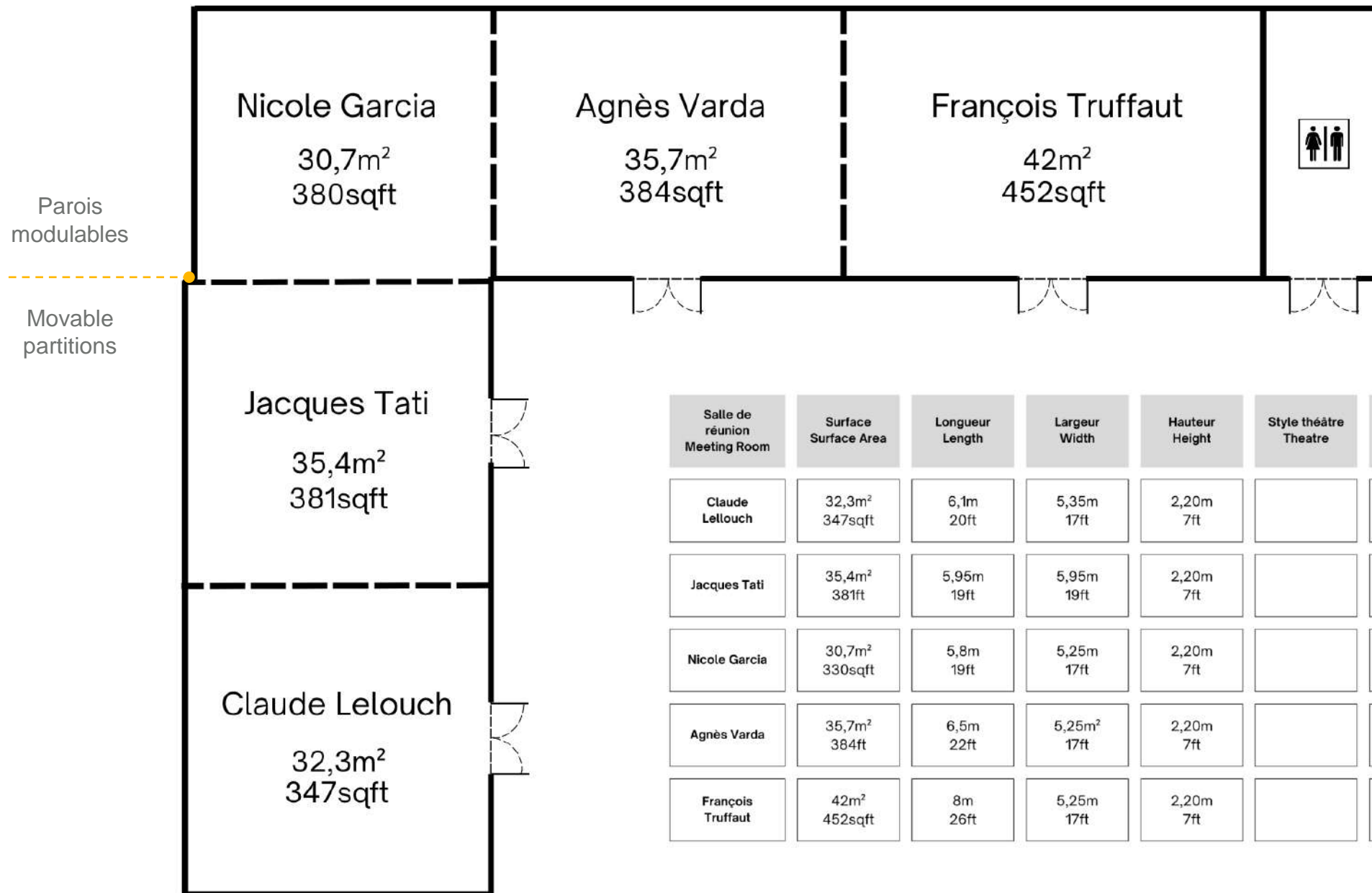
THE GARDEN



THE GARDEN

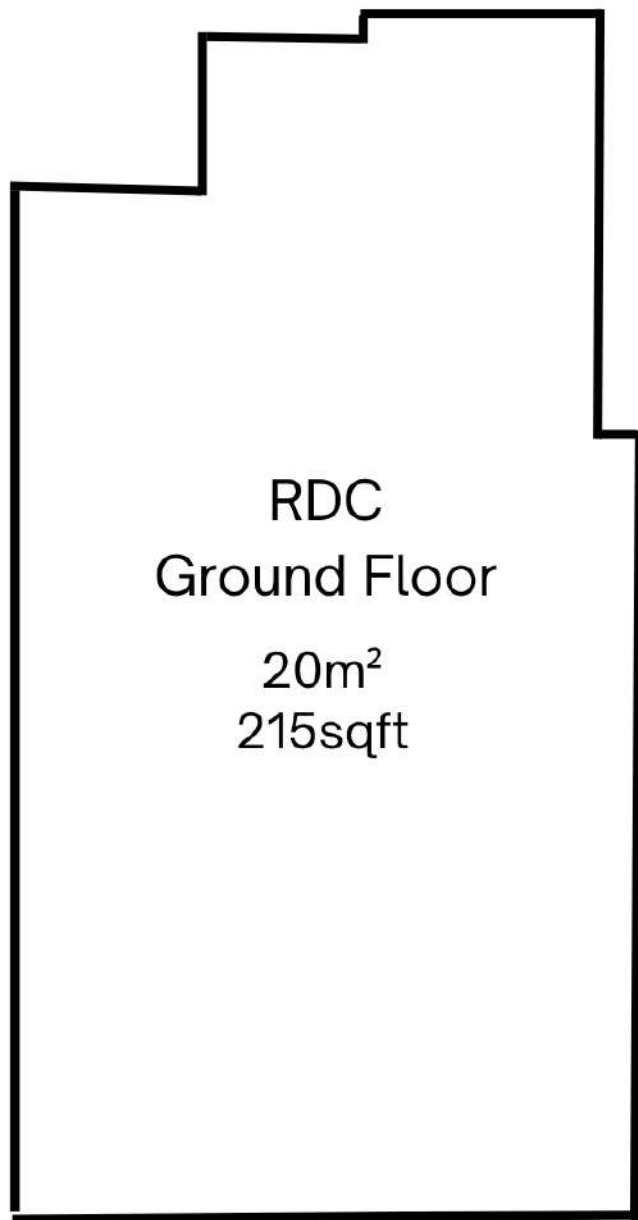


MEETING ROOMS

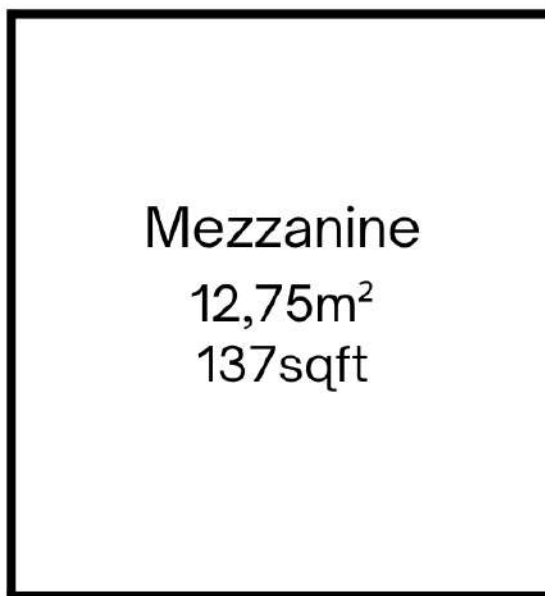


Salle de réunion Meeting Room	Surface Surface Area	Longueur Length	Largeur Width	Hauteur Height	Style théâtre Theatre	Style U fermé Boardroom	Table en U U Shape
Claude Lelouch	32,3m² 347sqft	6,1m 20ft	5,35m 17ft	2,20m 7ft		20	10
Jacques Tati	35,4m² 381ft	5,95m 19ft	5,95m 19ft	2,20m 7ft		16	12
Nicole Garcia	30,7m² 330sqft	5,8m 19ft	5,25m 17ft	2,20m 7ft		16	12
Agnès Varda	35,7m² 384ft	6,5m 22ft	5,25m² 17ft	2,20m 7ft		24	20
François Truffaut	42m² 452sqft	8m 26ft	5,25m 17ft	2,20m 7ft		24	20

MEETING ROOMS



SALLE JACQUES AUDIARD ROOM JACQUES AUDIARD							
Salle de réunion Meeting Room	Surface Surface Area	Longueur Length	Largeur Width	Hauteur Height	Style Théâtre Theatre	Style U fermé Boardroom	Table en U U Shape
RDC Ground Floor	20m ² 215sqft	5,17m 16ft	3,90m 12ft	1,94/4m 6/13ft		16	14
Mezzanine	12,75m ² 137sqft	3,74m 12ft	3,40 11ft	1,92m 6		8	6



Fitness area of 70m²

Cardio & weight training area

