



Located in a fast-growing neighborhood, the TOO Hotel offers its guests a celestial break from the top ten floors of one of Jean Nouvel's Duo Towers.

📍 65 rue Bruneseau, 75013 Paris, France
☎ +33 01 78 90 79 90
🌐 www.toohotel.com

Reservations reservation@toohotel.com
Meetings & Events events@toohotel.com
Contact contact@toohotel.com

➡ THE HOTEL

- 1 creator : Laurent Taïeb
- 1 artistic director : Philippe Starck
- An Mgallery Hotel Collection, Accor group
- 139 rooms and suites nestled in the clouds
- A fully glass-walled panoramic high-end restaurant
- Un futurist and festive skybar, available for private functions
- A unique outdoor terrace with a surface area of almost 150 sq. m
- A wellness and fitness center with terrace and outdoor jacuzzi
- Modular meeting and seminar rooms

From our 139 rooms and suites, Paris is yours to discover.
All rooms are equipped with :

🛏️ Integrated and adjustable home automation from your bed

🎒 Weights designed by Phillipe Starck

👕 Bathrobes and slippers

🧴 Bathroom products by Le Labo

🧊 Mini fridge and water bottles

☕ Breakfast in the room or to take away

🍴 All day dining

📶 Free Wifi

➡ TOO RESTAURANT

- Located on the 25th floor, 100m above ground
- A spectacular setting in a glass cube of 6m height under ceiling
- A 360° view of Paris
- A contemporary menu with world flavors by our Executive Chef Benjamin Six

Opening Times*

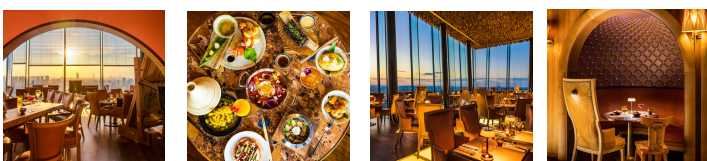
Breakfast : 7am - 10:30am

Lunch : 12:15pm - 3pm

Dinner : 7pm- 11pm

Total capacity : 180 seats

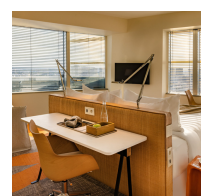
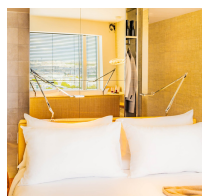
140 seating places, 40 seats at the bar



☎ +33 01 78 90 79 90
🌐 [Read more about TOO Restaurant](#)
✉ restaurant@toohotel.com

➡ 12 ROOM CATEGORIES

- Classic Room, Seine river view
- Superior Room, Seine river view
- Deluxe Room, Seine river view
- Deluxe Room, Paris view
- Deluxe High Floor Room, Paris, Montmartre and river Seine view
- Executive Room, Paris view
- Executive Balcony Room, Paris view
- Deluxe Room, Eiffel Tower view
- Executive Room, Eiffel Tower view
- Junior Family Suite , Seine river view
- Junior Suite, Eiffel Tower view
- Deluxe Junior Suite High-Floor, Eiffel Tower view



➡ TOO TACTAC SKYBAR

- Located on the 27th and last floor, 122m above the ground
- The highest rooftop in Paris with a 150sq. m terrace
- A convivial cuisine, ideal to share
- available for private functions
- Live music, DJ sets and theme-based soirees

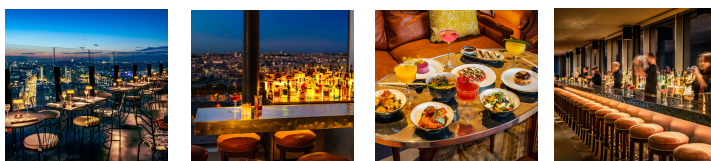
Opening Times*

Mon-Thu : 4pm -12pm

Fri-Sun : 4pm - 2am

Total hosting capacity : 162 seats

22 seats at the bar, 70 indoor seats et 70 seats on the terrace



☎ +33 01 78 90 79 90
🌐 [Read more about TOO Tactac skybar](#)
✉ tactac@toohotel.com
📸 [Check out our Instagram page](#)



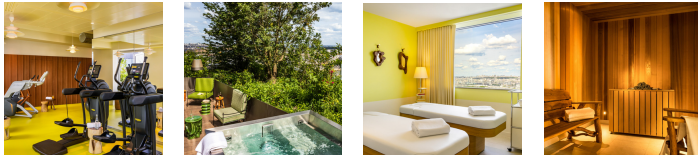
→ TOO CHILL

160 sq. m. of wellness space :

- 3 treatment rooms, including 2 doubles
- 1 cedar wood sauna
- 1 fitness room
- 1 10-seat outdoor hot tub
- 1 brand of products made in France, Ulé

Opening Times*

Treatments : 12pm-8pm
Sauna : 7am-10:30pm
Fitness : 6:30am-10:30pm
Hot tub : according to weather and seasonality



+33 01 78 90 79 90

[Read more about TOO Chill Spa](#)

spa@toohotel.com

→ TOO MEETING

- 4 modular meeting rooms
- 6 to 75 people
- Ideal for seminars, conferences, meetings, events and cocktail parties
- Located on the first floor with natural light
- Furniture by Philippe Starck and state-of-the-art technology

JBL Loudspeakers

Overhead projector

Screens

Wireless wifi

CAPACITY

	TOO Cosy	TOO Busy	TOO Smart	TOO Gather
	24m ²	37m ²	37m ²	74m ²
Class	6	15	10	25
U	12	14	11	26
Meeting	14	18	18	32
Amphitheater	N/A	30	28	50
Stand-up cocktail	24	36	37	75

→ DOWNTOWN PARIS

Towards Lyon Train Station



Towards Orly Airport

→ CONTACT

65 rue Bruneseau, 75013 Paris, France

+33 01 78 90 79 90

www.toohotel.com



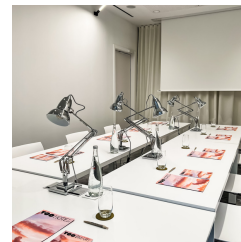
*Schedules are indicative and may change.

→ TOO GREEN RSE

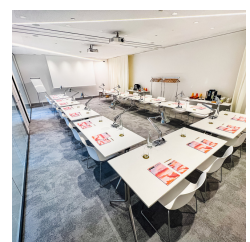
- Limited number of bathtubs
- Bespoke plumbing fixtures to regulate the water flow
- Smart rooms with presence detection sensors
- Rainwater harvesting
- Automated air conditioning
- Double blinds to ensure blackout and save energy
- Limited openings to avoid excessive temperature variations
- Doubled garbage cans to sort waste

Certifications and labelling :

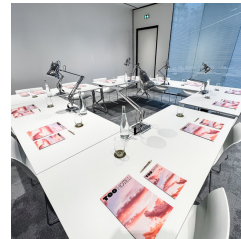
- NF BT HQE et Sustainable Building Passport
- WELL Labelling, Platinum level
- EFFINERGIE + Labelling
- LEED " Core and Shell", Platine level



TOO COSY



TOO GATHER



TOO BUSY



TOO SMART

→ ACCESSIBILITY

Tramway 3a - at the bottom of the tower
Avenue de France stop

Metro Line 14 and RER C - 1.4km
Bibliothèque François Mitterrand stop

Vélib' City Bike Station - 700m
Quai Panhard station and Levassor station

Less than 3km away
Lyon train station and Austerlitz train station

→ NEIGHBORHOOD

5th District
Jardin des Plantes, Institut du Monde Arabe, Arènes de Lutèce

12th District
Accor Arena Bercy, Bercy Village, Daumesnil Lake, Vincennes Zoo, Vincennes Wood

13th District
Station F, La Felicità, BNF, Cité de la Mode et du Design