



PARIS  OPÉRA
RECHERCHES

LE SCRIBE



LIVE THE FRENCH WAY

THERE
ARE
FACTS,
THEN
THERE'S
A GOOD
STORY.

LIVE THE FRENCH WAY
AT SOFITEL LE SCRIBE PARIS OPERA



LE SCRIBE

MANAGED BY SOFITEL

WELCOME

THE HOTEL SCRIBE HAS BEEN BEATING TO THE VIBRANT RHYTHM OF PARIS FOR OVER 150 YEARS.

A KEY PLAYER IN PARISIAN LIFE, THE HOTEL SCRIBE HAS NOW WRITTEN A NEW PAGE IN ITS HISTORY. THE NEW DESIGN BY ATELIER TRISTAN AUER COMBINES FAULTLESS SERVICE WITHIN THE INTIMACY OF A HAUSSMANN RESIDENCE IN THE HEART OF THE CAPITAL.

ON THE RIGHT BANK, NESTLED BETWEEN THE OPERA GARNIER AND PLACE VENDOME, THE SCRIBE'S LOCATION IS SECOND TO NONE OFFERING YOU THE VERY BEST OF PARIS FOR YOUR NEXT GETAWAY.

FACILITIES

201 ROOMS & 39 SUITES FROM
THE JUNIOR SUITE TO THE DUPLEX
APPARTMENT

3 RESTAURANTS & BARS
WELLNESS & FITNESS

7 MEETING ROOMS INCLUDING 1 RECEPTION
HALL WITH NATURAL
DAYLIGHT

BUSINESS CENTRE





TRENDS OF THE CITY

You are at the heart of the arts and culture: The Louvre located a 15-minute walk from the Hotel, the Museum of Decorative Arts and Fashion or the Orangerie and its extraordinary Monet's water lilies. Admire Paris from the Eiffel Tower... Travel through 19th century Paris by visiting the Museum of Romantic Life. Discover 5000 years of the history of perfume at Fragonard or the treasures of the Opera close to the Scribe. Stop by and meet our Clef d'or concierge team who will give you insider tips for a unique experience.



A PARISIAN SPIRIT

Built in 1863 as part of the creation of the Opera district, Le Scribe was chosen from the outset as the seat of the prestigious Jockey Club.

In 1871, the building was, for a time, the Parisian address of the famous Malletier Louis Vuitton.

In 1895, the Lumière brothers presented the world's first cinema screening while many artists and celebrities such as Josephine Baker made it their Parisian residence.

A key player in Parisian life, Le Scribe has now written a new page in its history in collaboration with Atelier Tristan Auer.



ADDRESS

Nestled in the heart of the right bank, the hotel is ideally just located steps away from the Opera Garnier, Place Vendôme and exclusive department stores. At the center of one of the most beautiful and prestigious districts of the capital, the hotels' location is second to none. What will you choose? The splendor of the opera house, the hustle and bustle of department stores, the treasures of the Louvre or the mysteries of the historical Parisian arcades?



DRIVE INTO MY BED

Indulge, dream and recharge. Our exceptionally crafted hotel beds are more than just a place to sleep — they are your own private sanctuary. Luxurious sleep is your ticket to greeting the world with joy! Indulge with warm croissants or healthy treats in the comfort of your very own Parisian apartment with our amazing in-room dining breakfast selection to kick start your day.

A CULINARY JOURNEY

Enjoy a mouthwatering culinary experience paired with our heartwarming service, right here, in the center of Paris at Rivages. The Café Scribe, a sophisticated Parisian counter, welcomes experts in coffee and tea and lovers of sweet pastries. Our mixology experts invite you to relax with our retro and stunning cocktails at the Bar du Scribe. On Sundays, Parisians and travelers meet around the traditional Sunday brunch before enjoying the day.





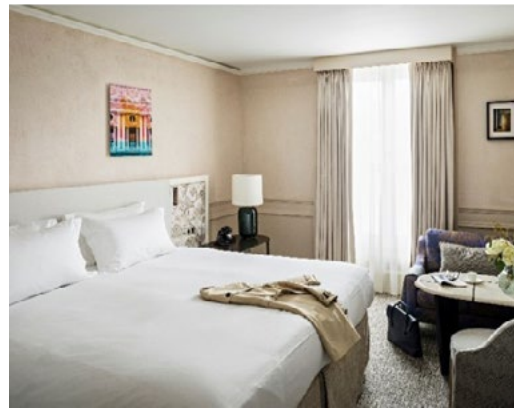
SUPERIOR ROOM

Guestroom of 215 sq ft
 Large open dressing
 Grands Boulevards or inside courtyard view
 Sofitel MyBed Queen size
 Hermès products in the bathroom
 Bath and shower combined
 24H/24 Room Service
 Bluetooth, UK/US/FR plugs
 Chromecast TV system
 Nespresso machine and water kettle



JUNIOR SUITE

Suite of 376 sq ft
 Large open dressing
 Grands Boulevards view
 Sofitel MyBed Queen size or King size or Twins 2x100
 Living room corner with Sofa bed
 Hermès products in the bathroom
 Bath and shower combined
 24H/24 Room Service
 Bluetooth, UK/US/FR plugs
 Chromecast TV system
 Nespresso machine and water kettle



LUXURY ROOM

Guestroom of 270 sq ft
 Large open dressing
 Grands Boulevards or inside courtyard view
 Sofitel MyBed Queen size
 Hermès products in the bathroom
 Bath and shower combined
 24H/24 Room Service
 Bluetooth, UK/US/FR plugs
 Chromecast TV system
 Nespresso machine and water kettle

PREMIUM JUNIOR SUITE

Suite of 430 sq ft
 Large open dressing
 Grands Boulevards view
 Sofitel MyBed Queen size or King size or Twins 2x100
 Separate Living room with Sofa bed
 Hermès products in the bathroom
 Separate bath and shower
 24H/24 Room Service
 Bluetooth, UK/US/FR plugs
 Chromecast TV system
 Nespresso machine and water kettle



LUXURY PREMIUM ROOM

Guestroom of 322 sq ft
 Large open dressing
 Grands Boulevards view
 Sofitel MyBed Queen size or King size or Twins 2x100
 Hermès products in the bathroom
 Separate bath and shower
 24H/24 Room Service
 Bluetooth, UK/US/FR plugs
 Chromecast TV system
 Nespresso machine and water kettle



HONEYMOON SUITE

Suite of 430 sq ft
 Large walk in closet
 Grands Boulevards view
 Round Sofitel MyBed
 Living room corner
 Hermès products in the bathroom
 Large elevated bath in the room
 Standing shower
 24H/24 Room Service
 Bluetooth, UK/US/FR plugs
 Chromecast TV system
 Nespresso machine and water kettle



PRESTIGE SUITE

Suite of 538 sq ft
 Large open dressing
 Grands Boulevards view
 Sofitel MyBed Queen size or King size or
 Twins 2x100
 Separate Living room with Sofa bed
 Hermès products in the bathroom
 Separate bath and shower
 24H/24 Room Service
 Bluetooth, UK/US/FR plugs
 Chromecast TV system
 Nespresso machine and water kettle



OPERA SUITE

Suite of 807 sq ft with one bedroom or 1023 sq ft with two
 bedrooms
 Large open dressing
 Grands Boulevards view with balconies
 Sofitel MyBed Queen size or King size or Twins 2x100
 Separate Living room with Sofa, desk and dining table for 4.
 Hermès products in the bathroom
 Separate bath and shower
 24H/24 Room Service
 Bluetooth, UK/US/FR plugs
 Chromecast TV system
 Nespresso machine and water kettle



TERRACE SUITE

Suite of 592 sq ft
 Large open dressing
 Inside courtyard view
 Private terrace of 315 sq ft with dining table and loungers
 Sofitel MyBed King size
 Separate Living room with Sofa bed
 Hermès products in the bathroom
 Separate bath and shower
 24H/24 Room Service
 Bluetooth, UK/US/FR plugs
 Chromecast TV system
 Nespresso machine and water kettle

ICONIC SUITES



PRESTIGE SUITE DUPLEX

Discover the Scribe's signature apartment, and immerse yourself in this contemporary and intimate universe for a unique experience. The setting is on two levels and offers you a spacious bedroom and a living room, enveloped by light, with its 6-meter-high bay windows. Take advantage of this stay to relax in your spacious bathroom and enjoy our in-room dining offer for an unforgettable stay.

Welcome to your Parisian apartment!

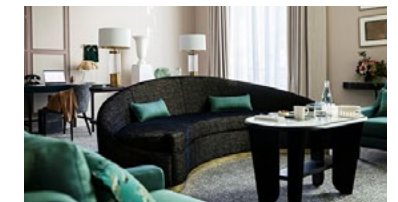
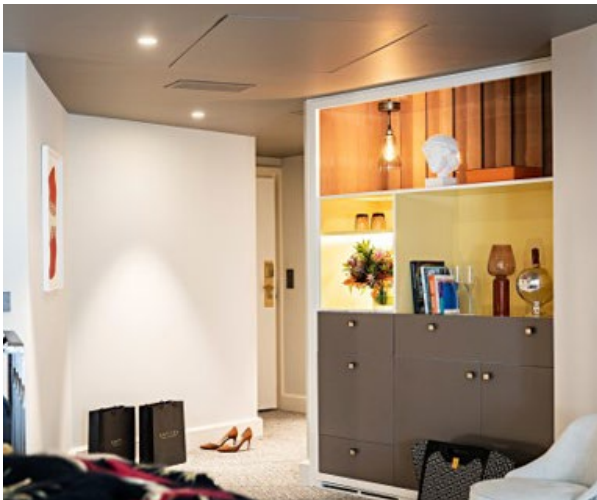


OPERA SUITE DUPLEX

Discover the emblematic Suite of the Scribe, and immerse yourself in a design and peaceful universe for the optimal comfort. Let yourself be lulled by the soft light that floods the living room through the 6-meter-high bay windows.

Admire the effervescence of Parisian life in the opera district from your balcony before heading to your upstairs bedroom and curling up in your King size Mybed™. This 1022 sq ft square suite will make you want to put down your suitcases and never leave...

Welcome home.





RIVAGES

"Once upon a time, far from the Mediterranean sun, there was a privileged place, in the heart of one of the most beautiful cities in the world ... Paris! A stone's throw from the Opera, this place was, more than a century ago, the birth place of cinema. The Lumière Brothers presented there in particular «The arrival of a train at La Ciotat station»... the Mediterranean, already. What a premonition... Today, it is in this lounge under a superb glass roof that the new restaurant du Scribe «Rivages» can be found. You can taste Mediterranean cuisine, seasonal and sharing with an authentic character - a magnificent homecoming. The sea reflects and amplifies, cerulean blue, Islands and inlets, Cassis and the Embiez... Born of the sea, the sun and the wind, Chef Denis Rippa's cuisine features vegetables and fruits, fish and shellfish, but also quite simply crudo, risotto, pasta and the legendary Tropicéenne. The wines follow and take us on a journey from the South of France to Italy or Greece. All the light of the Mediterranean finds its fulfillment here... a place, a moment, a magic...



LE BAR DU SCRIBE

A legendary Parisian address, le Bar du Scribe is nestled in the heart of the hotel on the right bank, steps away from the Opera Garnier. During the Liberation of Paris, the guests list included famous war reporters, photographers, journalists, writers and movie stars. Ernest Hemingway, John Dos Passos, Lee Miller, Robert Capa, Janet Flanner, Marlene Dietrich... were regularly spotted here. Reinvented with the Club spirit in mind by the designer, Tristan Auer, the bar welcomes you upon arrival at 1, rue Scribe. Comfortably seated at the half-moon counter, or huddled up in a suede armchair, you will savor the classics of French cuisine with a Mediterranean flair. The bar beats to the rhythm of the capital during the day, and in the evening, in a cozy candlelight ambiance, our mixology experts invite you to relax away from the hustle and bustle of the city with our retro and stunning cocktails.

LE CAFE SCRIBE

During the day, between a sophisticated boutique and a Parisian counter, the Café Scribe welcomes experts in coffee and tea, lovers of sweet pastries, and gourmets looking for seasonal and quality products. In the evening, enjoy the exciting and vibrant Paris. Have a glass of red wine with your colleagues, taste delicious tapas and enjoy spectacular cocktails of our mixologists. In this hybrid place, simultaneously chic and casual, tradition and creativity mingle. All day long Parisians and travelers meet and recreate the Scribe's story.



IN ROOM DINING

A new room service menu, available 24 hours a day, has been created for delicious breakfasts and meals. Live fully your parisian escape, within the chic and comfort design decor of your room, with the delights of the aperitif or the gourmet treats of afternoon tea. Indulge, dream and recharge in our exceptionally crafted Sofitel MyBeds. Wake up with warm croissants or healthy treats with our in-room dining continental breakfast to kick start your day.

GUESTROOMS INSPIRED BY HAUSSMANN-AREA APARTMENTS

A walk-in closet in a nod to the department stores

Designed in the style of a luggage compartment and a real decorative feature, the walk-in closet extends the experience by playing on the district's myriad window displays and shopping opportunities, accommodating guests' belongings in complete sophistication and offering easy access to all their clothing.



The fireplace is the centerpiece of the room

Drawing inspiration from Haussmann-era apartments, it fulfills a multitude of functions - a sideboard for storing items or simply its traditional purpose. The fireplace itself features glossy rectangular tiles, an illusion to our century-old metro. A mirror concealing a television sits atop the fireplace.

A Bakelite telephone

To reestablish tangible communication, Wilson Associates sought to make rotary telephones fashionable again, echoing the retro style of 1950s.

Splashes of color

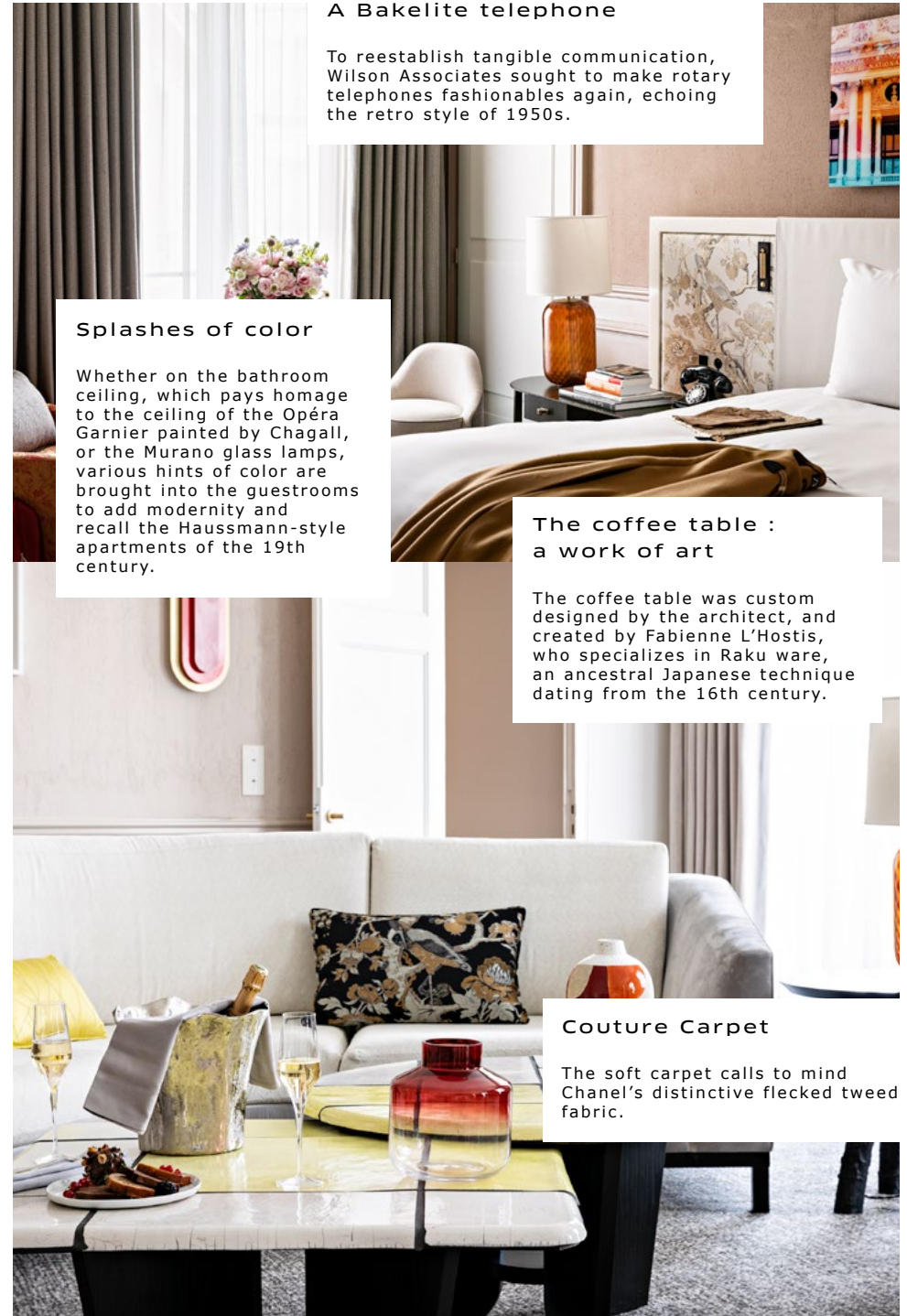
Whether on the bathroom ceiling, which pays homage to the ceiling of the Opéra Garnier painted by Chagall, or the Murano glass lamps, various hints of color are brought into the guestrooms to add modernity and recall the Haussmann-style apartments of the 19th century.

The coffee table : a work of art

The coffee table was custom designed by the architect, and created by Fabienne L'Hostis, who specializes in Raku ware, an ancestral Japanese technique dating from the 16th century.

Couture Carpet

The soft carpet calls to mind Chanel's distinctive flecked tweed fabric.



A headboard reminiscent of a folding screen

A decorative feature that Tristan Auer has particular affection for : a headboard designed as a folding screen. This element helps to create a cocooning and cozy ambience, with a touch of the baroque around the central feature - the bed. The fabric featuring floral and animal patterns was designed by Dedar. The pattern comes from an archive design which, in its textile version, calls to mind Coromandel decorative pieces – the Chinese folding screens in fashion in the 17th and 18th centuries and ubiquitous in Gabrielle Chanel’s apartment, at 31 rue Cambon, just a short walk from Le Scribe.



A bathroom designed according to the luxury standards of the Haussmann apartments of the 19th century.

From the terrazzo flooring to the colorful ceilings, from the rose gold fittings to the wooden ceiling coving : in the bathroom, a multitude of materials are overlaid: ceramics, marble effect...



Details and references

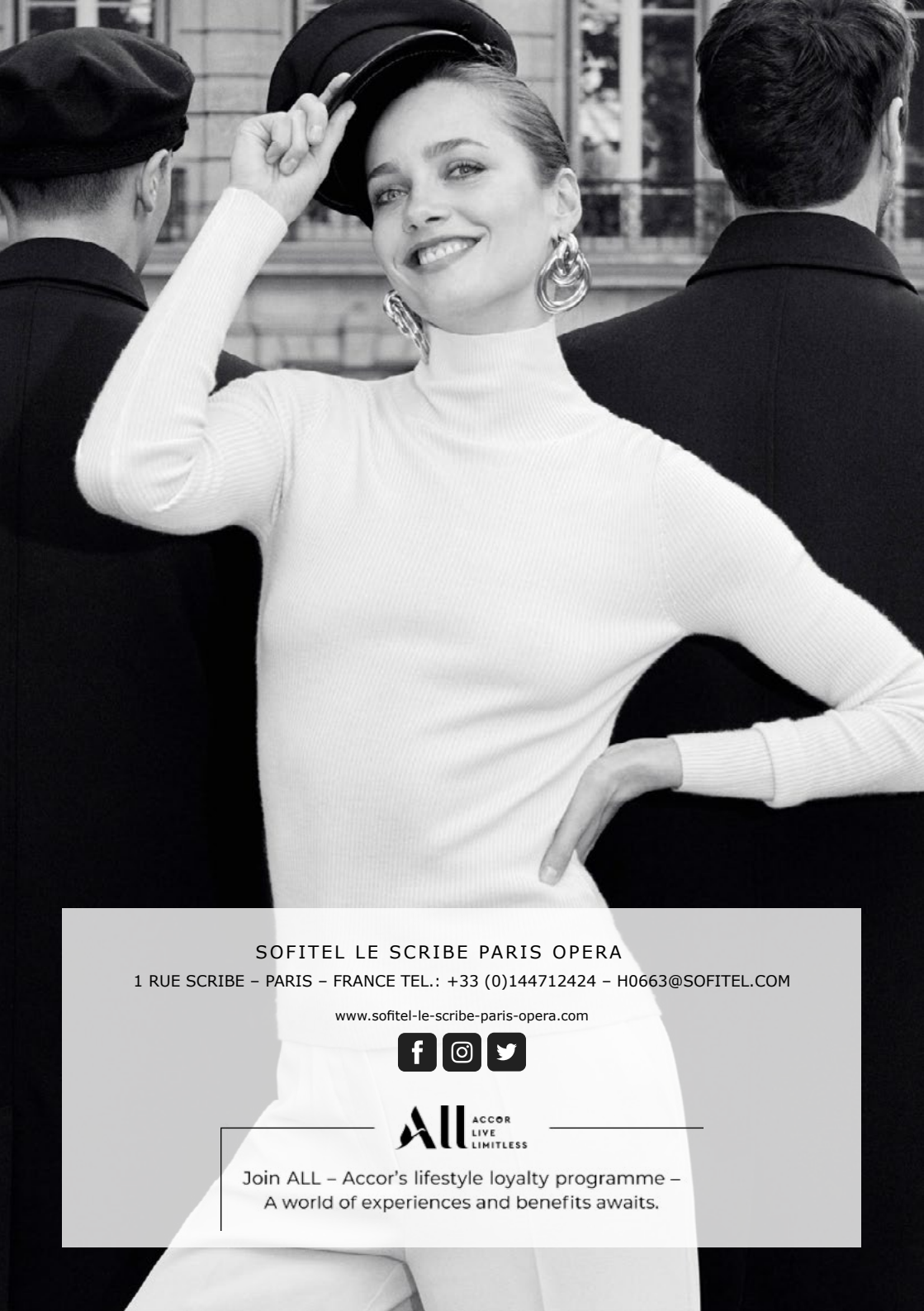
Taking inspiration from the district, the hotel’s character reflects the neighboring architecture. Guestrooms are full of details that evoke the museum-filled life of surrounding area - coving, wainscoting, colums and a bust from the Atelier Prométhée, inside the walk-in closet.



MAGNIQUES MEETINGS

Whether you are organizing a meeting, congress, press conference, gala dinner or a fashion show, our 7 meeting and reception facilities offer a total area of 5630 sq ft. For events up to 200 guests. Our team is your partner, working with you to ensure the success of your event.

MEETING ROOM	DIMENSIONS M.	SURFACE M ²	THEATER	U-SHAPE	BOARDROOM	CLASSROOM	BANQUETTING	COCKTAIL	CABARET
AUGUSTE LUMIERE	6,8 x 13,4	91,1	100	35	36	42	70	100	40
AUGUSTE LUMIERE a	6,8x6,7	45,6	40	15	17	18	40	40	15
AUGUSTE LUMIERE b	6,8x6,7	45,6	32	15	17	18	36	40	15
LOUIS LUMIERE	11,8 x 7,5	87,2	84	35	34	45	70	100	40
LOUIS LUMIERE a	7,5x4,9	35,9	28	14	10	18	24	40	15
LOUIS LUMIERE b	7,5x6,9	50,5	45	20	16	27	44	80	20
FOYER	16,5 x 5,95	91	/	/	/	/	/	100	/
SALON 1895	9,9 x 20,3	170,3	100	/	/	/	102	200	/
SALON 1895 a	9x11,1	85,3	70	23	24	30	58	70	35
SALON 1895 b	9,9x9,1	84,7	43	18	18	/	44	80	/
GALERIE	15,2 x 5,99	83,4	/	/	/	/	18	65	/



SOFITEL LE SCRIBE PARIS OPERA

1 RUE SCRIBE – PARIS – FRANCE TEL.: +33 (0)144712424 – H0663@SOFITEL.COM

www.sofitel-le-scribe-paris-opera.com



Join ALL – Accor's lifestyle loyalty programme –
A world of experiences and benefits awaits.