



PARIS  OPÉRA

**LE SCRIBE**



LIVE THE FRENCH WAY

THERE  
ARE  
MEETINGS,  
THEN  
THERE  
ARE  
MAGNIFIQUE  
MEETINGS  
OF  
MINDS.

LIVE THE FRENCH WAY  
AT SOFITEL LE SCRIBE PARIS OPERA



PARIS LE SCRIBE OPERA

**LE SCRIBE**

MANAGED BY SOFITEL



## LE SCRIBE PARIS OPÉRA

Let's experience the Parisian lifestyle in this emblematic address within the intimacy of our Haussmann residence. With its club spirit, it is the perfect meeting place for your exclusive events. A collaboration with French designer Tristan Auer



1. MAGNIFIQUE MEETINGS



2. CAPACITY CHART



3. FOOD & BEVERAGE



4. ACCOMMODATIONS



5. REWARDS SCHEME

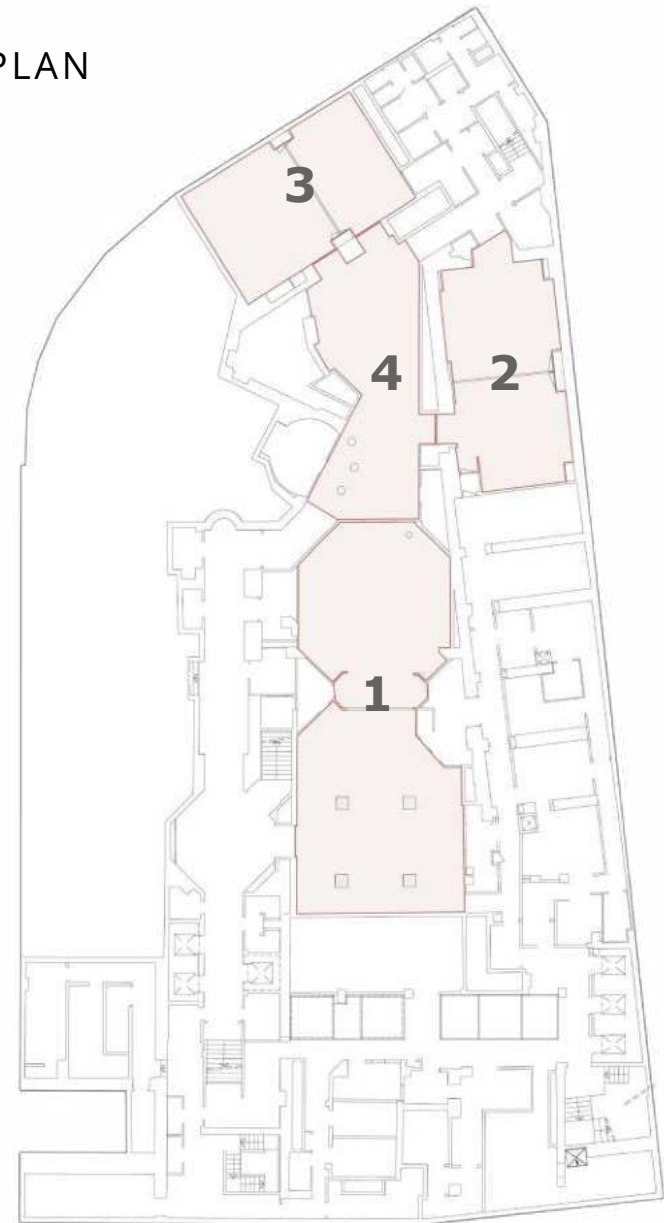
CONTACTS

## MAGNIFIQUE MEETINGS

Whether you are organizing a meeting, congress, press conference, gala dinner or a fashion show, our 7 meeting and reception facilities offer a total area of 5630 sq ft. for events up to 200 guests. Our teams are your partners, working with you to ensure the success of your event.

1. 1895, A, B
2. AUGUSTE LUMIÈRE, A, B
3. LOUIS LUMIÈRE, A, B
4. FOYER

## FLOORPLAN







## 1895

Modular space which can be offered in the form of two separated lounges with a capacity of up to 200 guests.

This reception room can be arranged according to your needs and at your convenience in a U shape style or for a cocktail celebration/social Events.

Welcome to the 1895 the birth place of Cinema!

OVERVIEW

FLOORPLAN

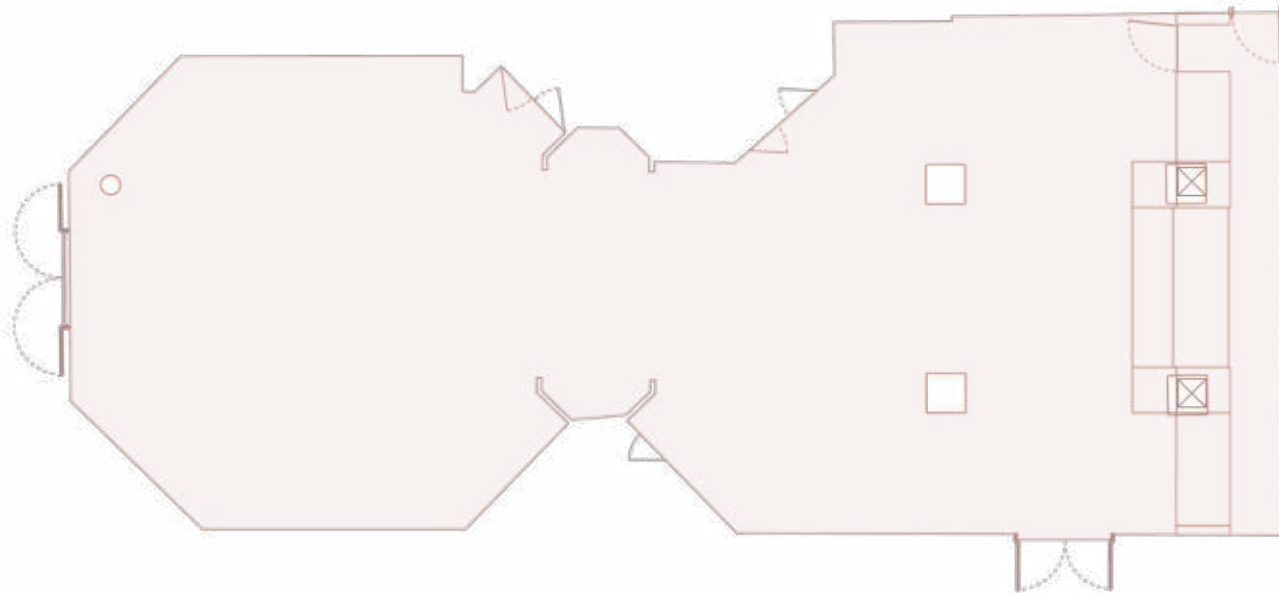
GALLERY

FACILITIES





# FLOORPLAN GENERAL LAYOUT 1895



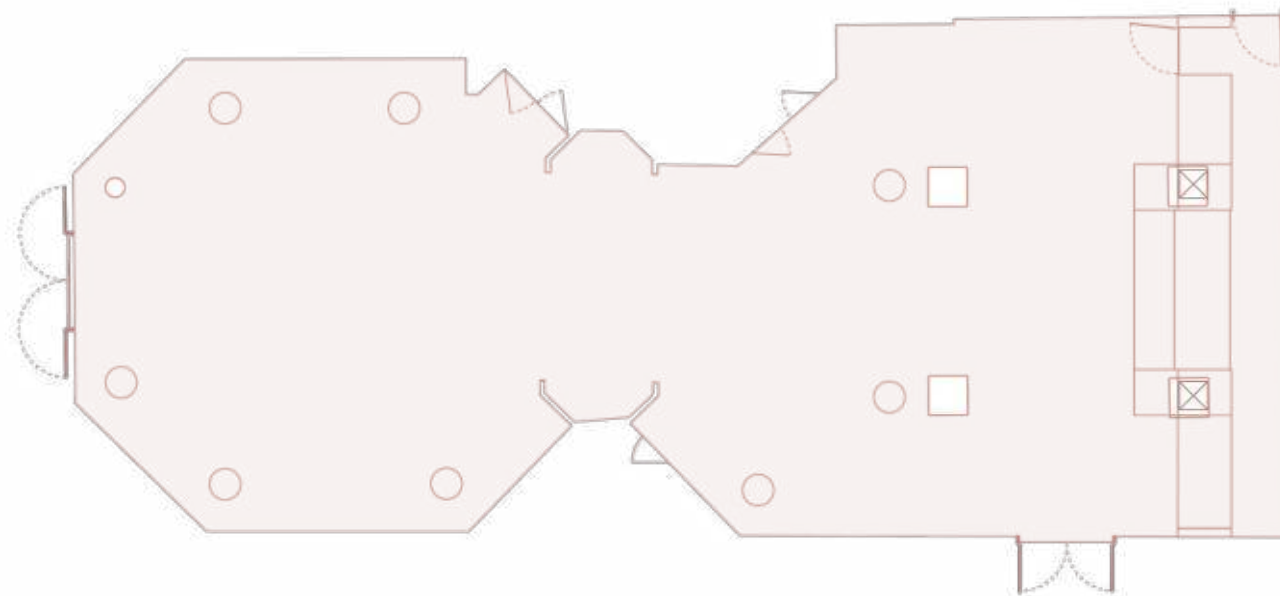
GENERAL  
RECEPTION  
THEATRE  
CABARET  
CLASSROOM  
BANQUET  
CONFERENCE  
U-SHAPE  
  
MAIN MENU

## SPECIFICATIONS

Capacity : 200 pax  
Dimensions : 170 m<sup>2</sup>



# FLOORPLAN RECEPTION LAYOUT 1895



GENERAL  
RECEPTION  
THEATRE  
CABARET  
CLASSROOM  
BANQUET  
CONFERENCE  
U-SHAPE  
  
MAIN MENU

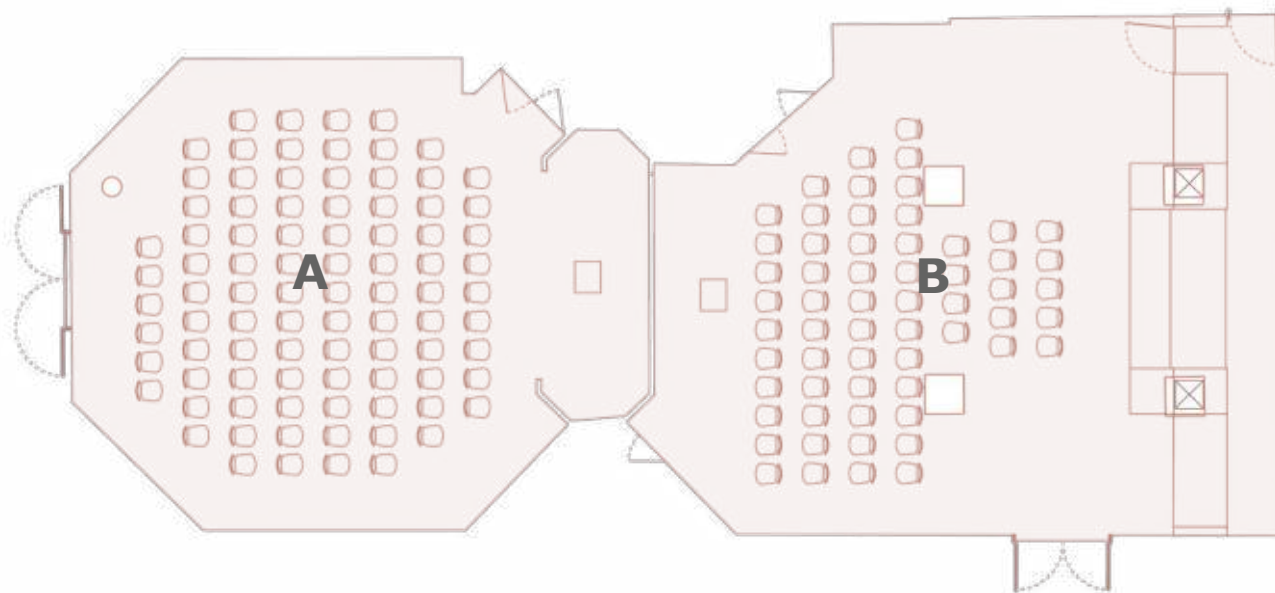
## SPECIFICATIONS

Capacity : 200 pax  
Dimensions : 170 m<sup>2</sup>





# FLOORPLAN THEATRE LAYOUT 1895



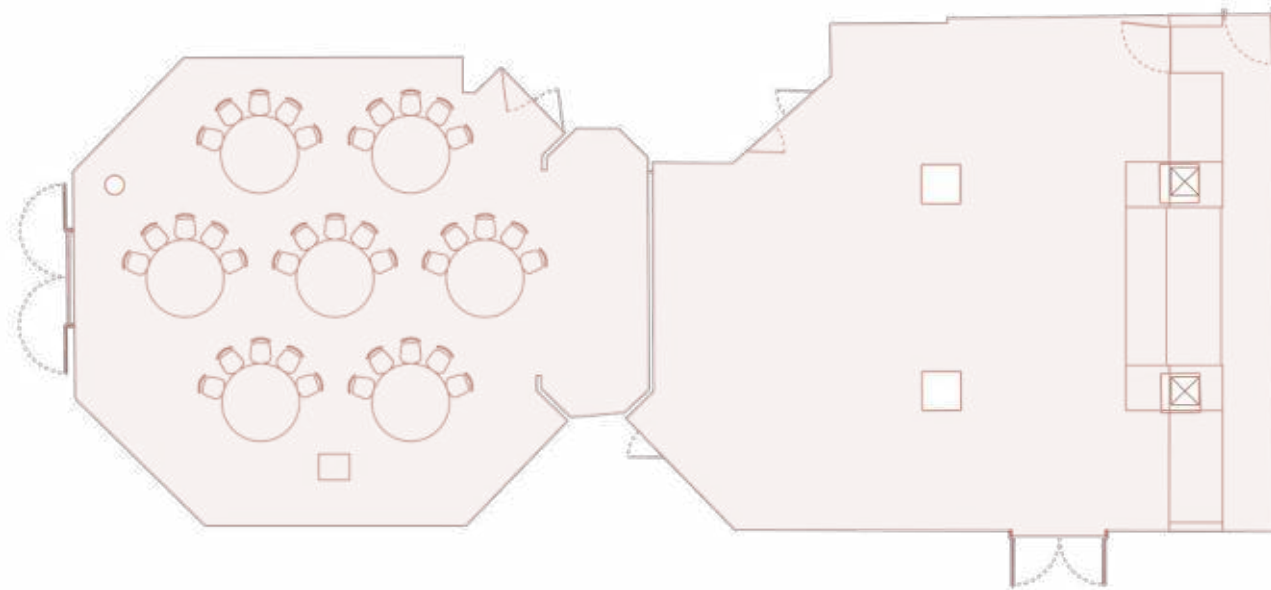
- GENERAL
- RECEPTION
- THEATRE
- CABARET
- CLASSROOM
- BANQUET
- CONFERENCE
- U-SHAPE
  
- MAIN MENU

## SPECIFICATIONS

Capacity : 149 pax  
Dimensions : 170 m<sup>2</sup>



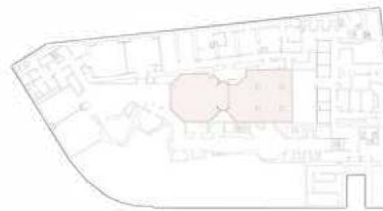
# FLOORPLAN CABARET LAYOUT 1895



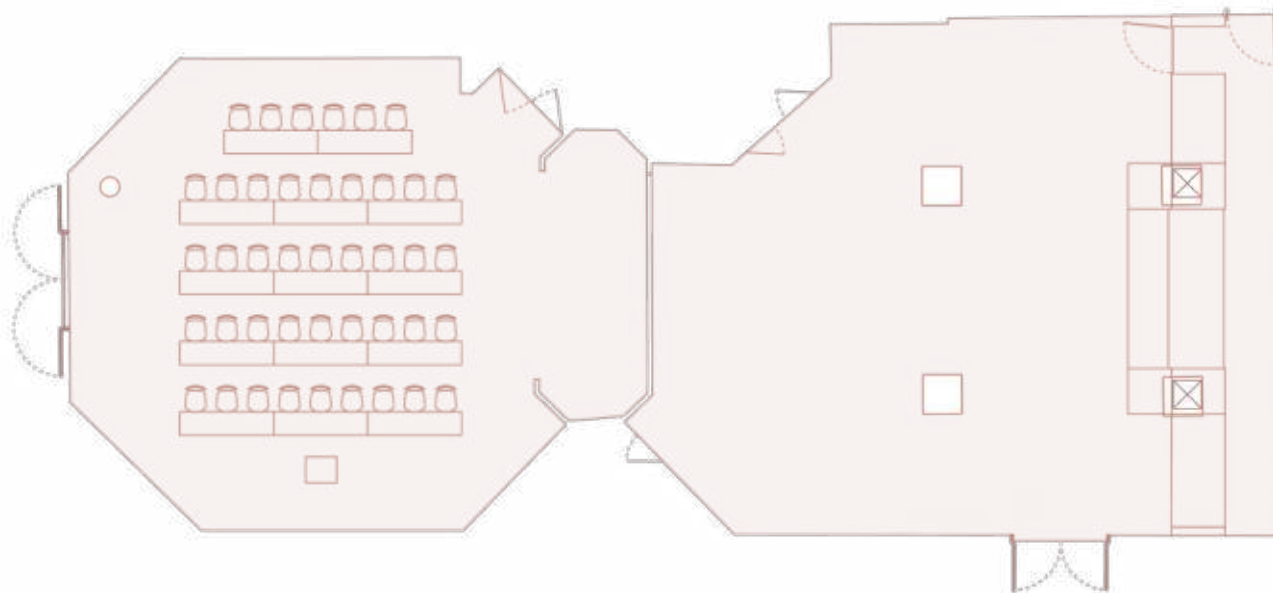
- GENERAL
- RECEPTION
- THEATRE
- CABARET
- CLASSROOM
- BANQUET
- CONFERENCE
- U-SHAPE
  
- MAIN MENU

## SPECIFICATIONS

Capacity : 35 pax  
Dimensions : 170 m<sup>2</sup>



# FLOORPLAN CLASSROOM LAYOUT 1895



- GENERAL
- RECEPTION
- THEATRE
- CABARET
- CLASSROOM
- BANQUET
- CONFERENCE
- U-SHAPE
  
- MAIN MENU

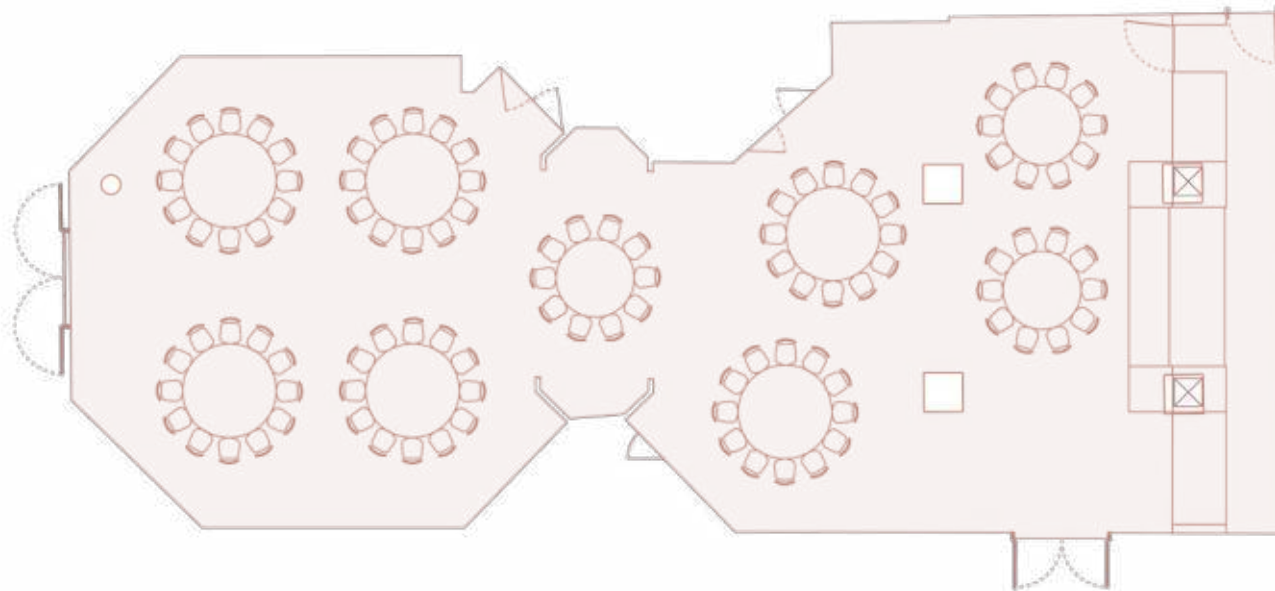
## SPECIFICATIONS

Capacity : 42 pax  
Dimensions : 170 m<sup>2</sup>



# FLOORPLAN BANQUET ROUNDS A+B

1895



- GENERAL
- RECEPTION
- THEATRE
- CABARET
- CLASSROOM
- BANQUET
- CONFERENCE
- U-SHAPE
- MAIN MENU

## SPECIFICATIONS

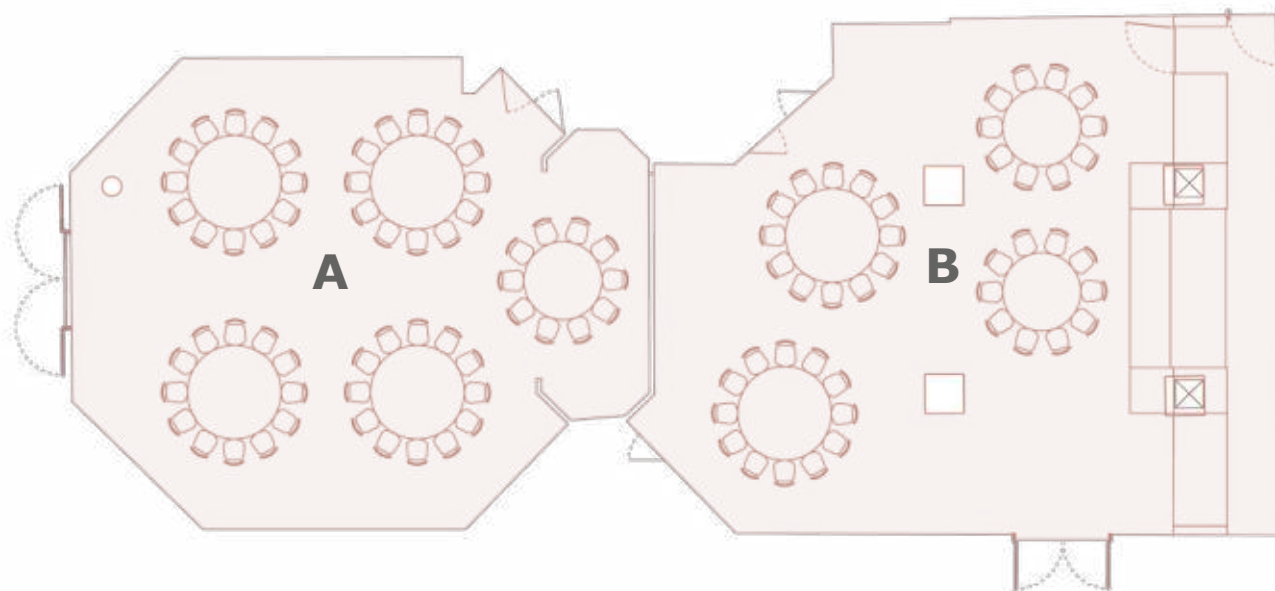
Capacity : 102 pax  
Dimensions : 170 m<sup>2</sup>





# FLOORPLAN BANQUET ROUNDS A OR B

## 1895



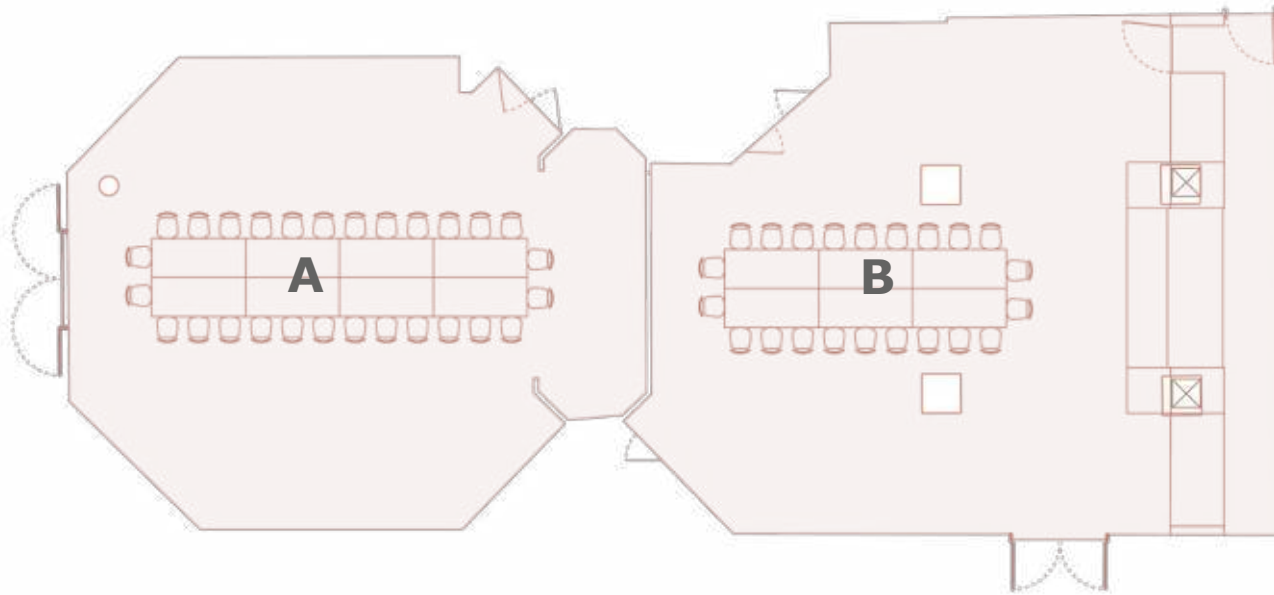
- GENERAL
- RECEPTION
- THEATRE
- CABARET
- CLASSROOM
- BANQUET
- CONFERENCE
- U-SHAPE
- MAIN MENU

### SPECIFICATIONS

Capacities : **A** 58 / **B** 44 pax  
Dimensions : **A** 85 / **B** 84 m<sup>2</sup>



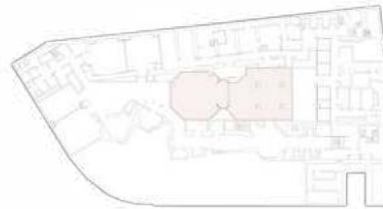
# FLOORPLAN CONFERENCE LAYOUT A OR B 1895



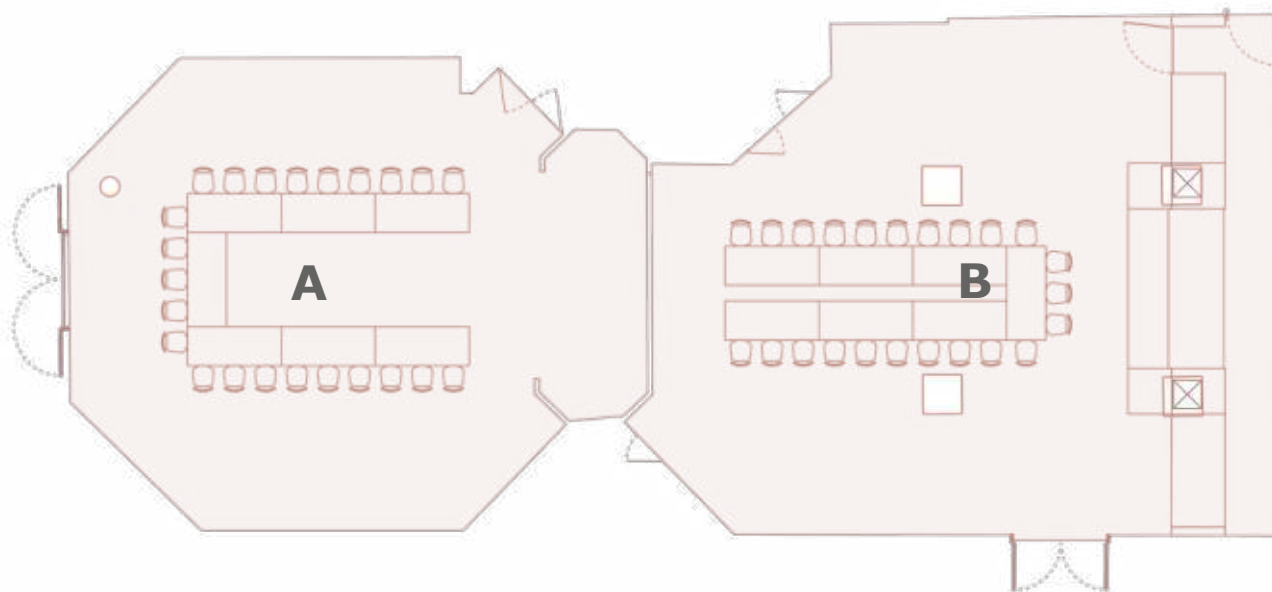
GENERAL  
RECEPTION  
THEATRE  
CABARET  
CLASSROOM  
BANQUET  
CONFERENCE  
U-SHAPE  
MAIN MENU

## SPECIFICATIONS

Capacities : **A** 28 / **B** 22 pax  
Dimensions : **A** 85 / **B** 84 m<sup>2</sup>



# FLOORPLAN U-SHAPE LAYOUT A OR B 1895



- GENERAL
- RECEPTION
- THEATRE
- CABARET
- CLASSROOM
- BANQUET
- CONFERENCE
- U-SHAPE
- MAIN MENU

## SPECIFICATIONS

Capacities : **A** 23 / **B** 23 pax  
Dimensions : **A** 85 / **B** 84 m<sup>2</sup>





## AUDIO VISUAL FEATURES 1895

- Screen: 240 X 180cm
- Video projector (5000 lumens)
- Barco Click & Share
- USB connection
- Amplification with 4 Bose enceintes DM2S (puissance tbc)
- High speed and Wi-fi internet access
- Air conditioning





## AUGUSTE LUMIÈRE

The perfect meeting room for your day delegate meeting or for a co-working session.

In a Plenary session for up to a 100 delegates in theatre style or 40 guests in cabaret style for a dinner presentation.

[OVERVIEW](#)

[FLOORPLAN](#)

[GALLERY](#)

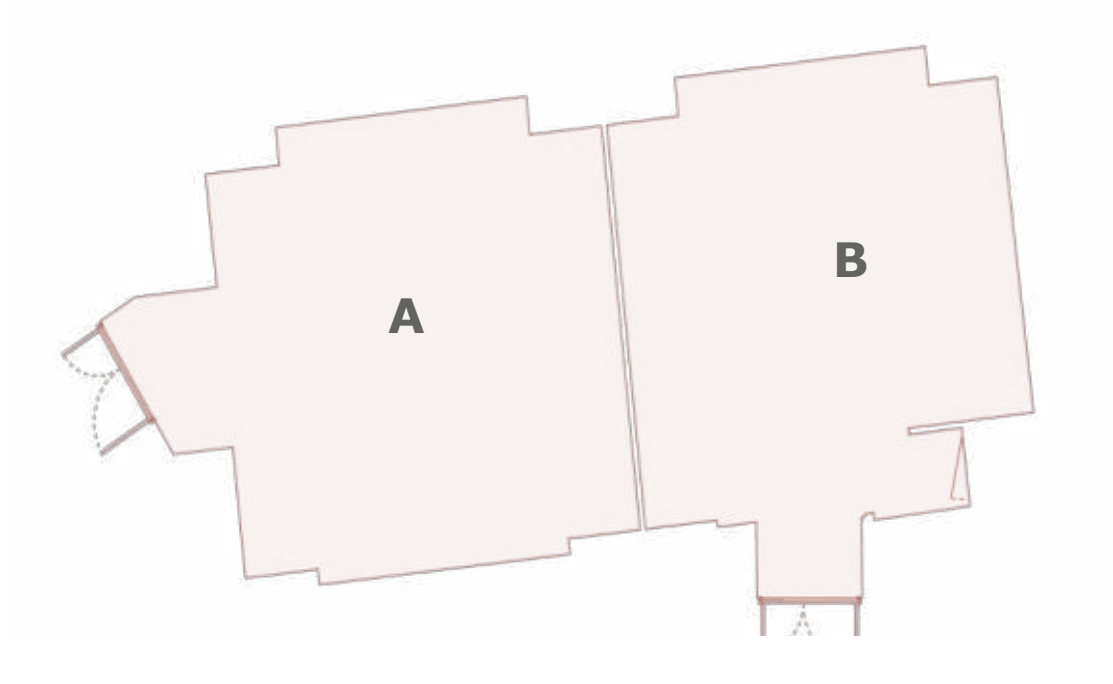
[FACILITIES](#)





# FLOORPLAN GENERAL LAYOUT

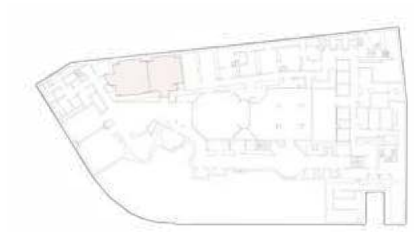
## AUGUSTE LUMIÈRE



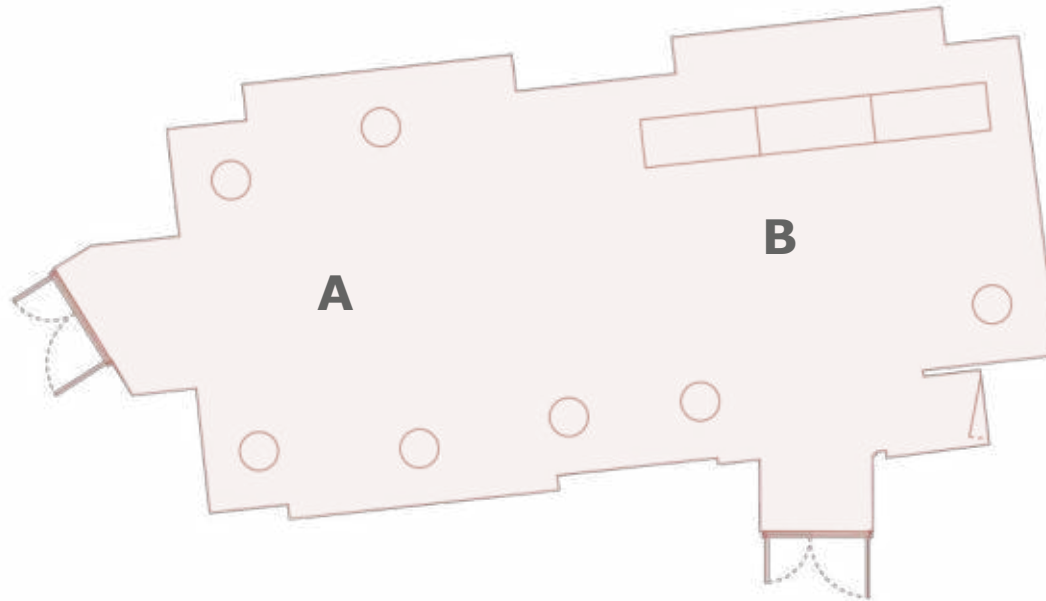
- GENERAL
- RECEPTION
- THEATRE
- CABARET
- CLASSROOM
- BANQUET
- CONFERENCE
- U-SHAPE
  
- MAIN MENU

### SPECIFICATIONS

Capacity : 100 pax  
Dimensions : 91 m<sup>2</sup>



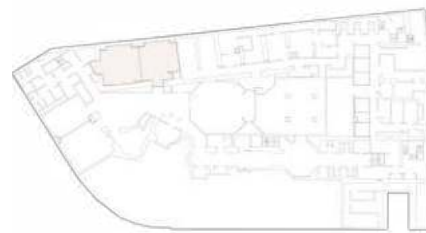
# FLOORPLAN RECEPTION LAYOUT AUGUSTE LUMIÈRE



- GENERAL
- RECEPTION
- THEATRE
- CABARET
- CLASSROOM
- BANQUET
- CONFERENCE
- U-SHAPE
  
- MAIN MENU

## SPECIFICATIONS

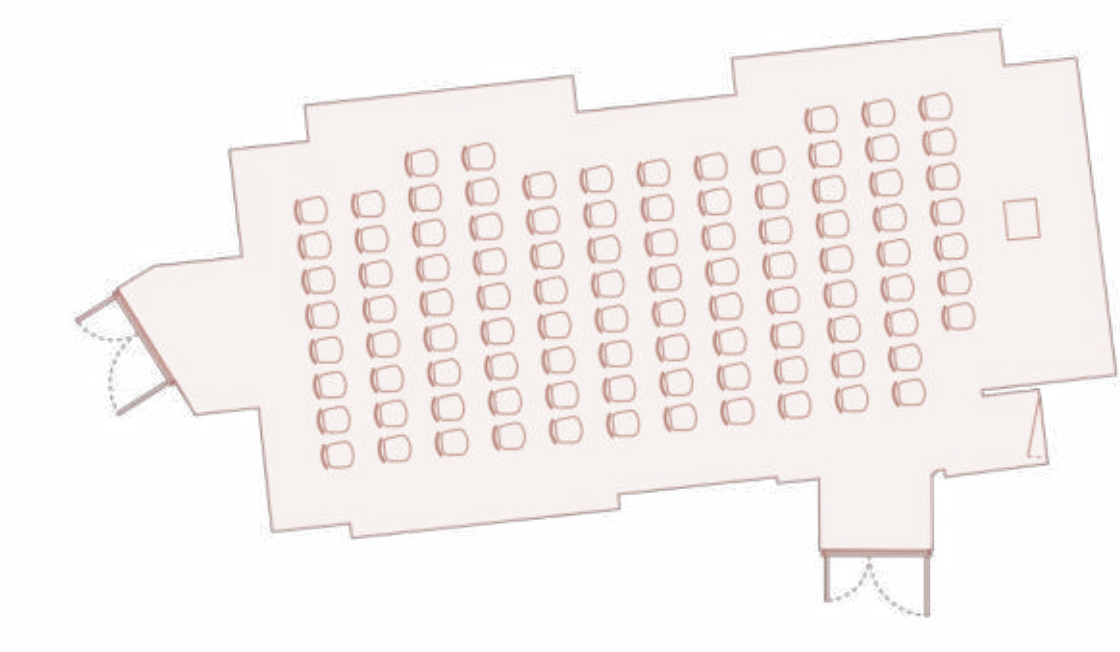
Capacity : 100 pax  
Dimensions : 91 m<sup>2</sup>





# FLOORPLAN THEATRE LAYOUT A+B

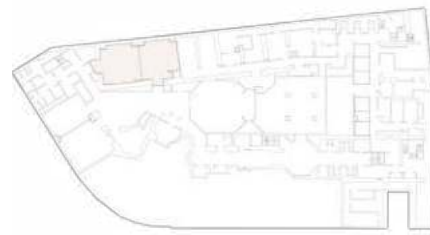
## AUGUSTE LUMIÈRE



- GENERAL
- RECEPTION
- THEATRE
- CABARET
- CLASSROOM
- BANQUET
- CONFERENCE
- U-SHAPE
- MAIN MENU

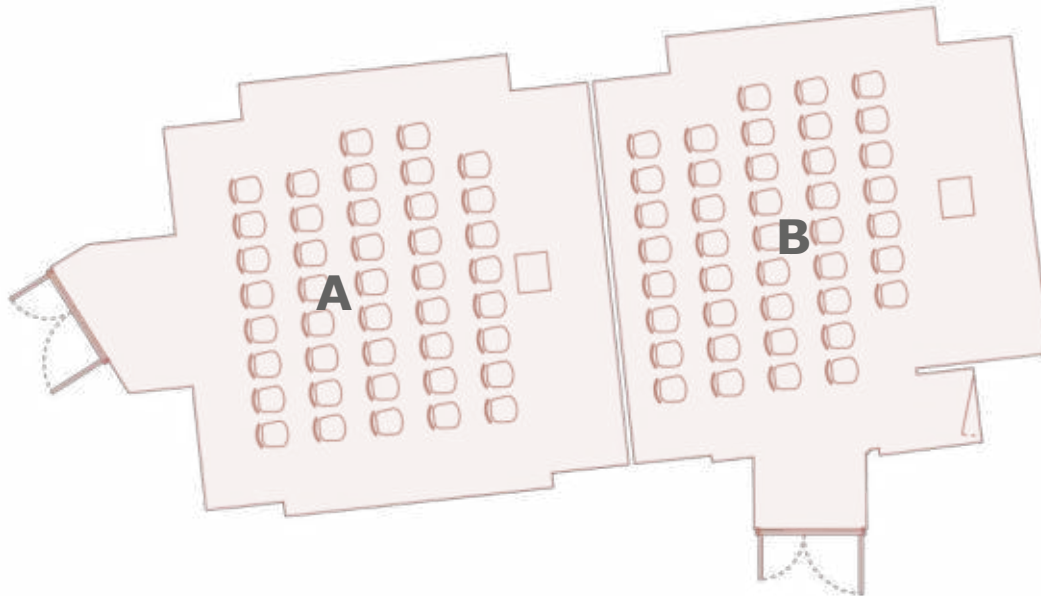
### SPECIFICATIONS

Capacity : 100 pax  
Dimensions : 91 m<sup>2</sup>



# FLOORPLAN THEATRE LAYOUT A OR B

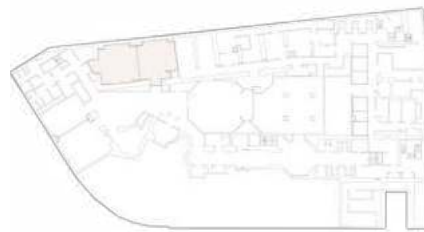
## AUGUSTE LUMIÈRE



- GENERAL
- RECEPTION
- THEATRE
- CABARET
- CLASSROOM
- BANQUET
- CONFERENCE
- U-SHAPE
- MAIN MENU

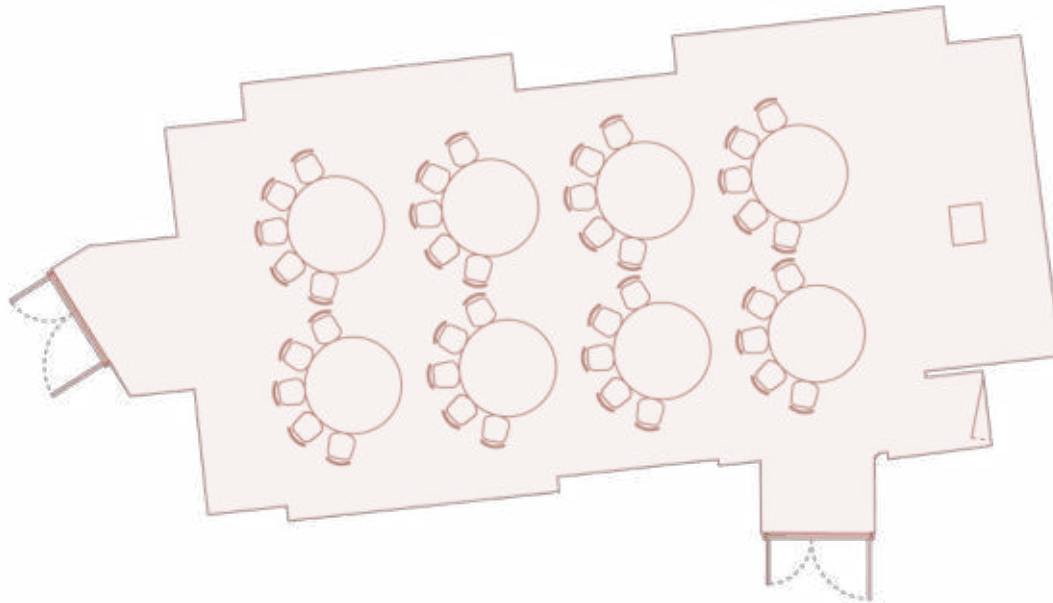
### SPECIFICATIONS

Capacities : **A** 42 / **B** 41 pax  
Dimensions : **A** 45,6 / **B** 45,6 m<sup>2</sup>



# FLOORPLAN CABARET LAYOUT A+B

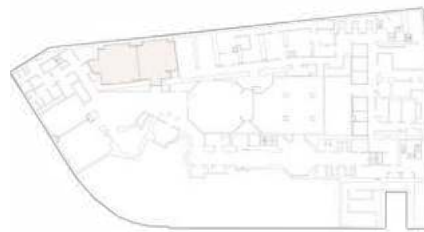
## AUGUSTE LUMIÈRE



- GENERAL
- RECEPTION
- THEATRE
- CABARET
- CLASSROOM
- BANQUET
- CONFERENCE
- U-SHAPE
  
- MAIN MENU

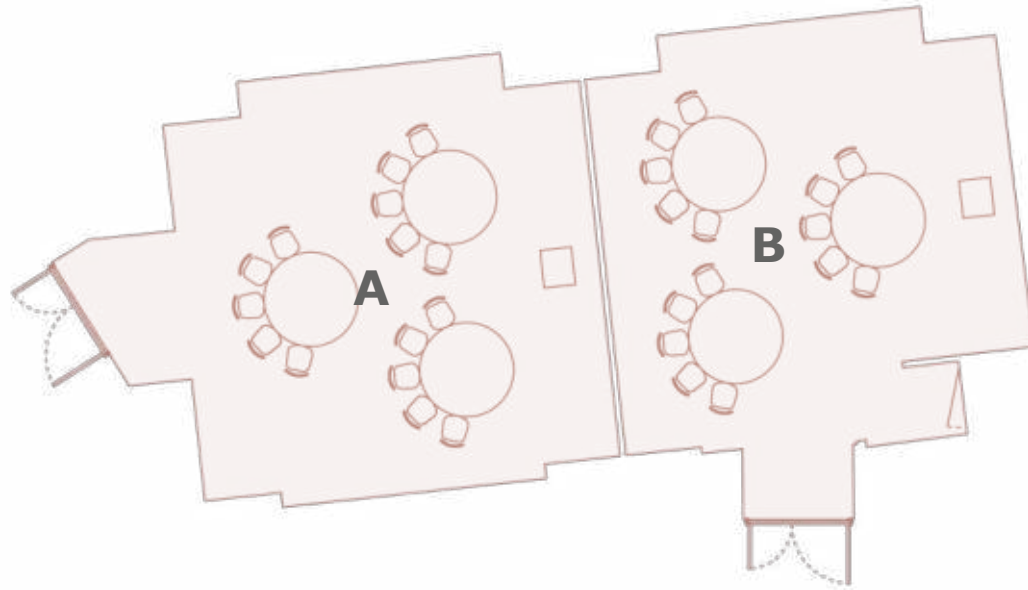
### SPECIFICATIONS

Capacity : 40 pax  
Dimensions : 91 m<sup>2</sup>



# FLOORPLAN CABARET LAYOUT A OR B

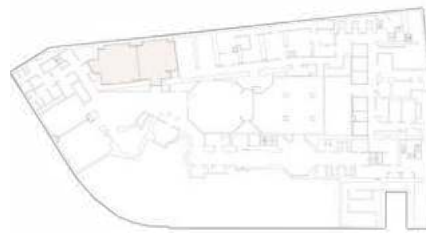
## AUGUSTE LUMIÈRE



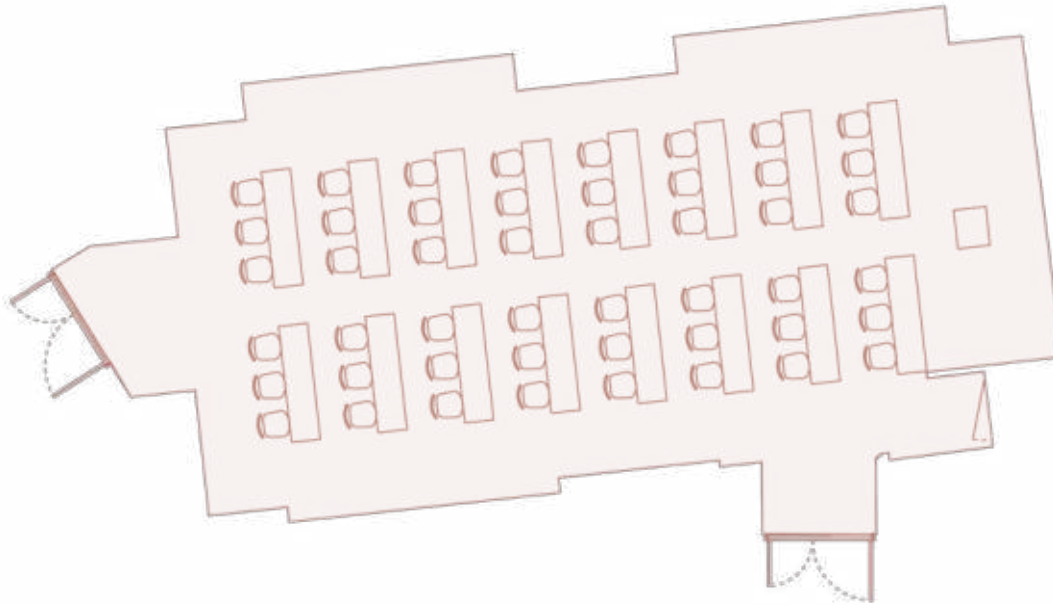
GENERAL  
RECEPTION  
THEATRE  
CABARET  
CLASSROOM  
BANQUET  
CONFERENCE  
U-SHAPE  
  
MAIN MENU

### SPECIFICATIONS

Capacities : **A** 15 / **B** 15 pax  
Dimensions : **A** 45,6 / **B** 45,6 m<sup>2</sup>



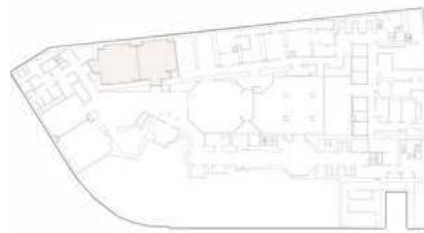
# FLOORPLAN CLASSROOM LAYOUT AUGUSTE LUMIÈRE



- GENERAL
- RECEPTION
- THEATRE
- CABARET
- CLASSROOM
- BANQUET
- CONFERENCE
- U-SHAPE
  
- MAIN MENU

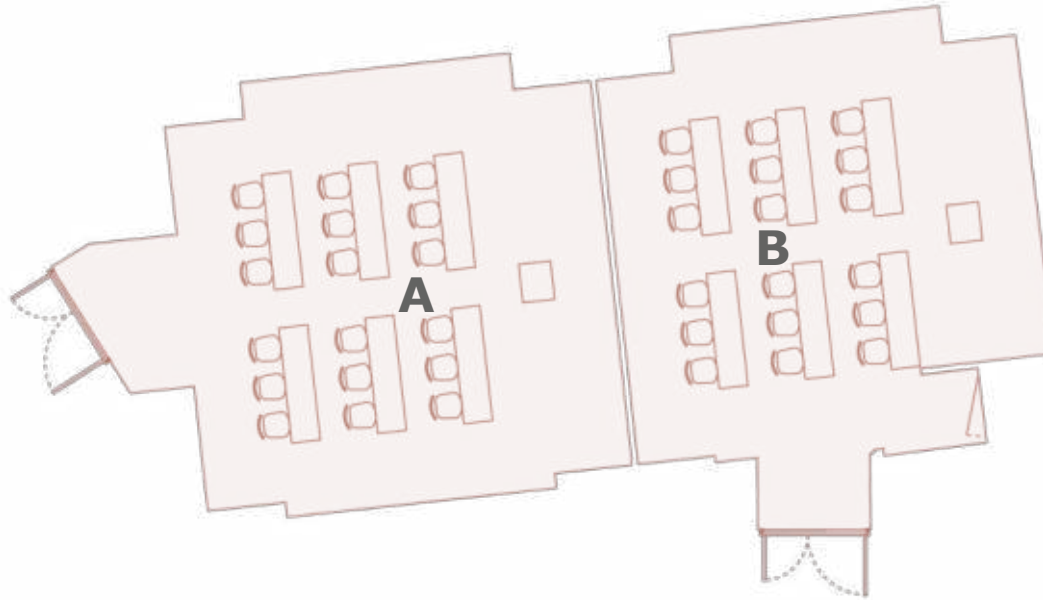
## SPECIFICATIONS

Capacity : 63 pax  
Dimensions : 91 m<sup>2</sup>



# FLOORPLAN CLASSROOM LAYOUT A OR B

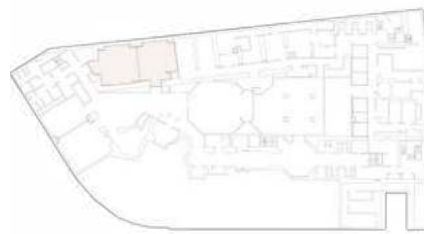
## AUGUSTE LUMIÈRE



GENERAL  
RECEPTION  
THEATRE  
CABARET  
CLASSROOM  
BANQUET  
CONFERENCE  
U-SHAPE  
  
MAIN MENU

### SPECIFICATIONS

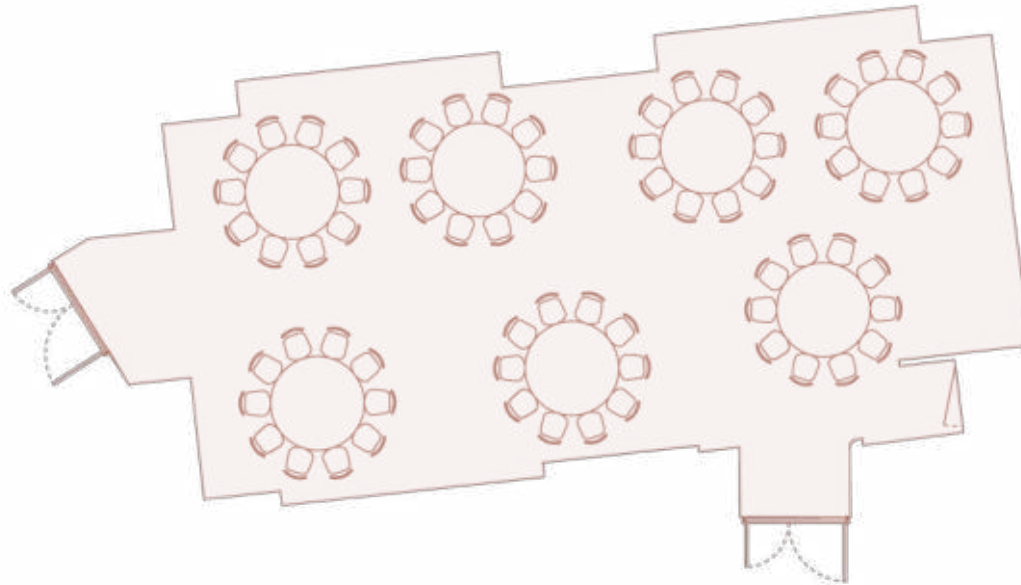
Capacities : **A** 18 / **B** 18 pax  
Dimensions : **A** 45,6 / **B** 45,6 m<sup>2</sup>





# FLOORPLAN BANQUET ROUNDS

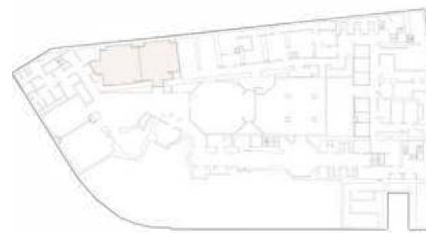
## AUGUSTE LUMIÈRE



GENERAL  
RECEPTION  
THEATRE  
CABARET  
CLASSROOM  
BANQUET  
CONFERENCE  
U-SHAPE  
  
MAIN MENU

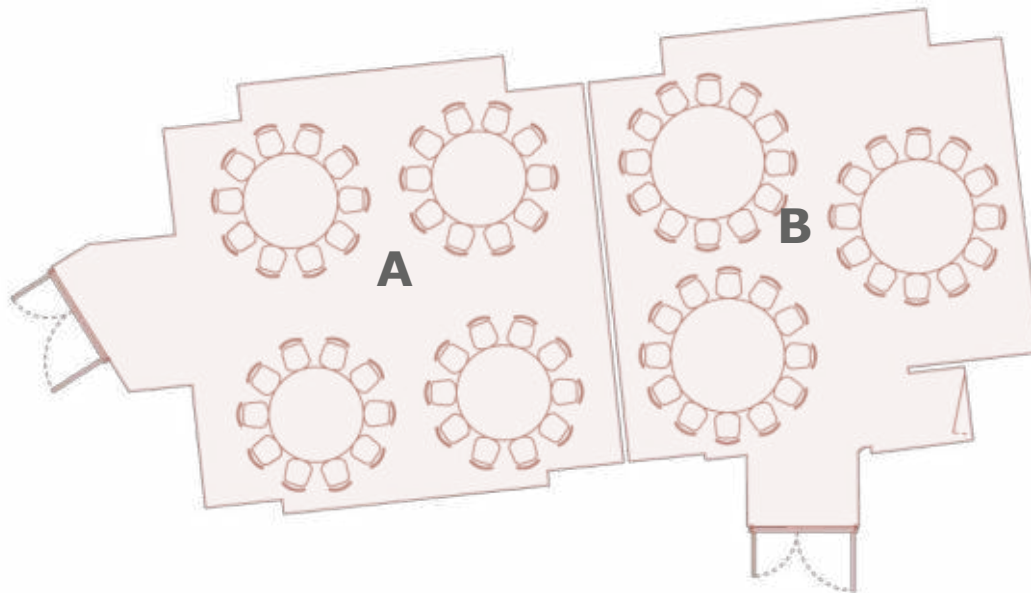
### SPECIFICATIONS

Capacity : 72 pax  
Dimensions : 91 m<sup>2</sup>



# FLOORPLAN BANQUET ROUNDS A OR B

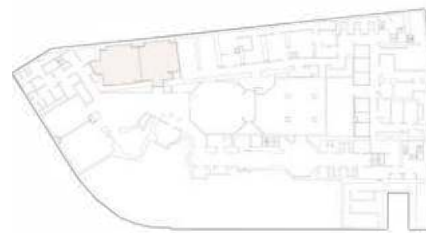
## AUGUSTE LUMIÈRE



- GENERAL
- RECEPTION
- THEATRE
- CABARET
- CLASSROOM
- BANQUET
- CONFERENCE
- U-SHAPE
  
- MAIN MENU

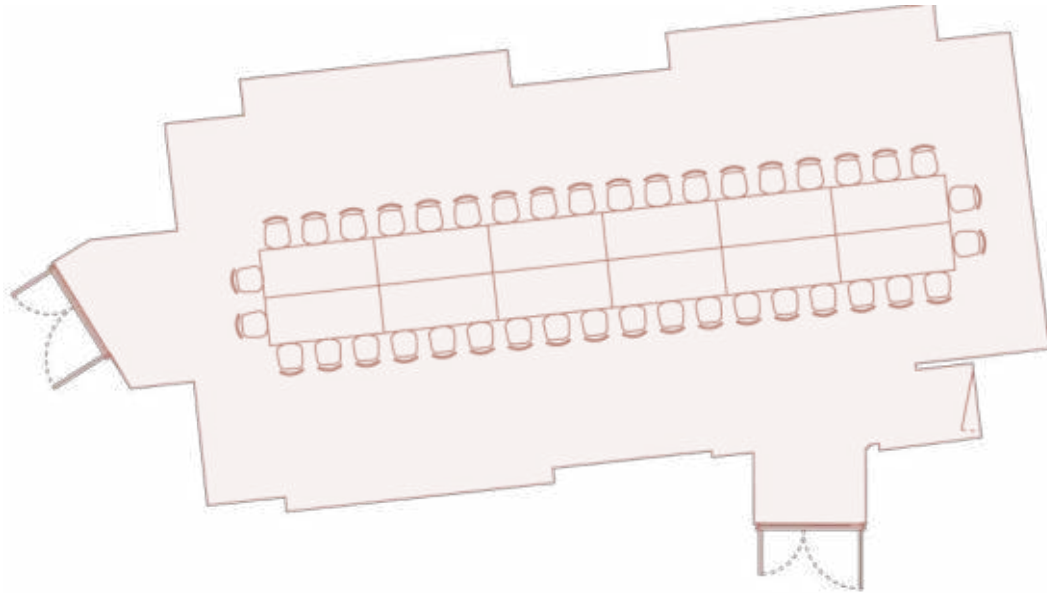
### SPECIFICATIONS

Capacities : **A** 40 / **B** 36 pax  
Dimensions : **A** 45,6 / **B** 45,6 m<sup>2</sup>



# FLOORPLAN CONFERENCE LAYOUT A+B

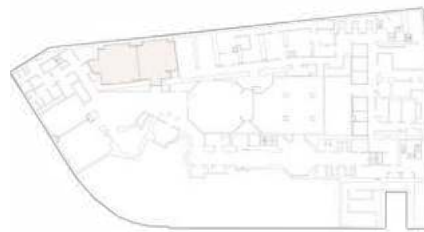
## AUGUSTE LUMIÈRE



GENERAL  
RECEPTION  
THEATRE  
CABARET  
CLASSROOM  
BANQUET  
CONFERENCE  
U-SHAPE  
MAIN MENU

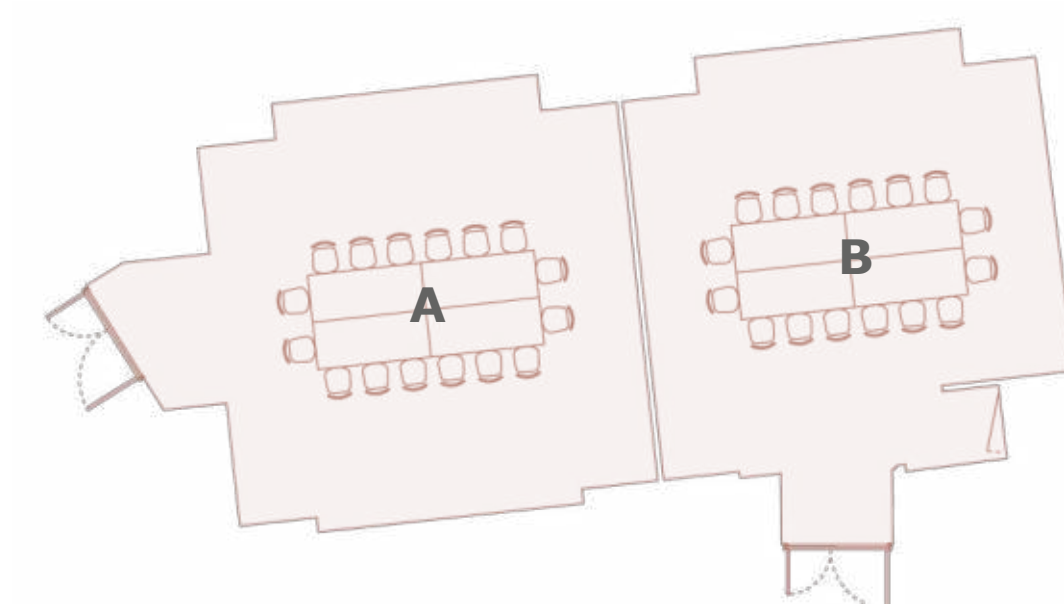
### SPECIFICATIONS

Capacity : 40 pax  
Dimensions : 91 m<sup>2</sup>



# FLOORPLAN CONFERENCE LAYOUT A OR B

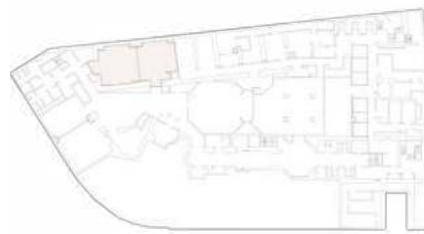
## AUGUSTE LUMIÈRE



GENERAL  
RECEPTION  
THEATRE  
CABARET  
CLASSROOM  
BANQUET  
CONFERENCE  
U-SHAPE  
  
MAIN MENU

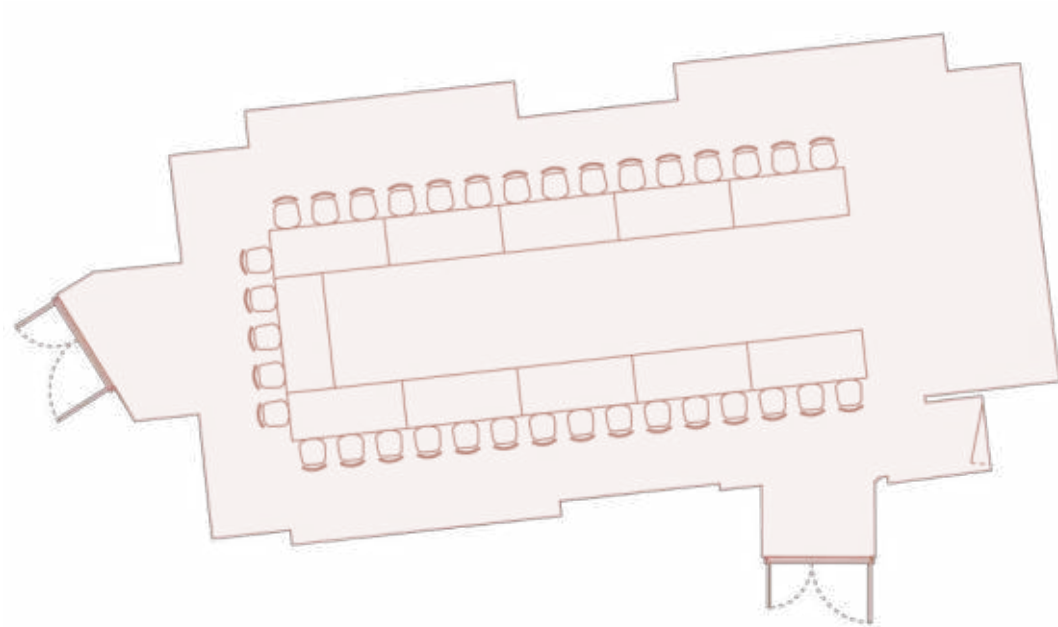
### SPECIFICATIONS

Capacities : **A** 16 / **B** 16 pax  
Dimensions : **A** 45,6 / **B** 45,6 m<sup>2</sup>



# FLOORPLAN U-SHAPE LAYOUT A+B

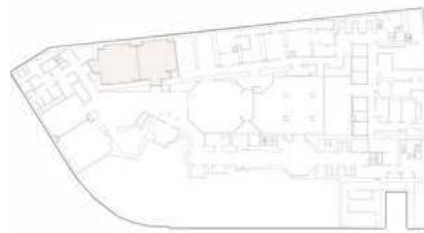
## AUGUSTE LUMIÈRE



GENERAL  
RECEPTION  
THEATRE  
CABARET  
CLASSROOM  
BANQUET  
CONFERENCE  
U-SHAPE  
  
MAIN MENU

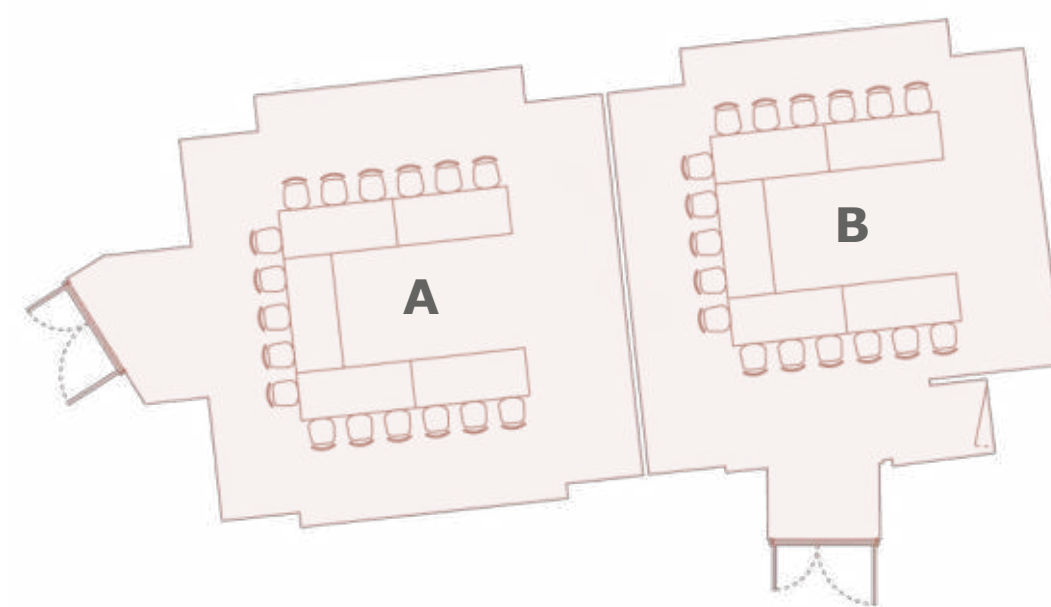
### SPECIFICATIONS

Capacity : 42 pax  
Dimensions : 91 m<sup>2</sup>



# FLOORPLAN U-SHAPE LAYOUT A OR B

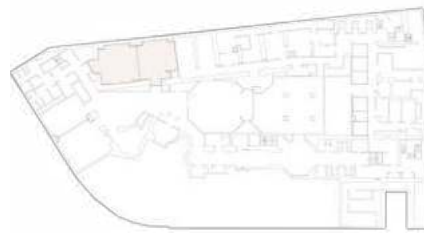
## AUGUSTE LUMIÈRE



- GENERAL
- RECEPTION
- THEATRE
- CABARET
- CLASSROOM
- BANQUET
- CONFERENCE
- U-SHAPE
- MAIN MENU

### SPECIFICATIONS

Capacity : **A** 17 / **B** 17 pax  
Dimensions : **A** 45,6 / **B** 45,6 m<sup>2</sup>







## AUDIO VISUAL FEATURES

### AUGUSTE LUMIÈRE

- Screen: 240 X 180cm
- Video projector (5000 lumens)
- Barco Click & Share
- USB connection
- Amplification with 4 Bose enceintes DM2S (puissance tbc)
- High speed and Wi-fi internet access
- Air conditioning



## LOUIS LUMIÈRE

Lounge Louis Lumière is an excellent choice for conferences, fashion shows or road shows.

With 87m2 of unobstructed space you can host a dinner for up to 70 guests or divide the elegant spaces into two separate rooms.

[OVERVIEW](#)

[FLOORPLAN](#)

[GALLERY](#)

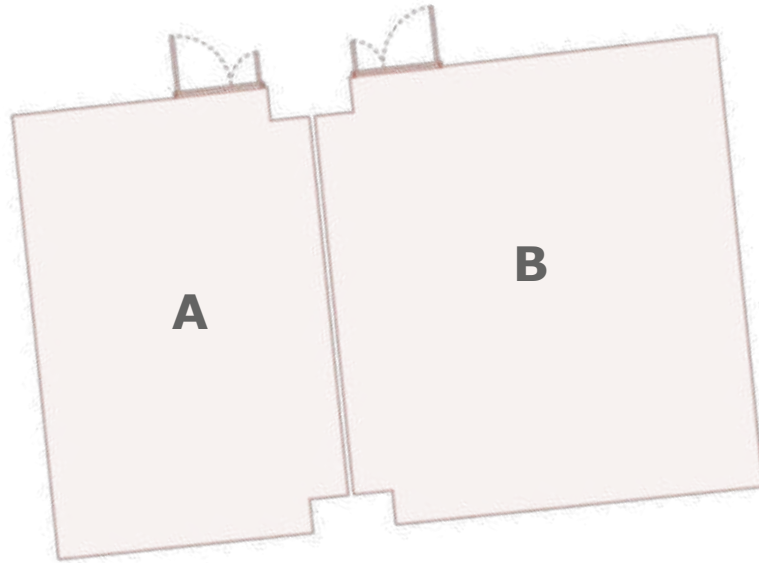
[FACILITIES](#)





# FLOORPLAN GENERAL LAYOUT

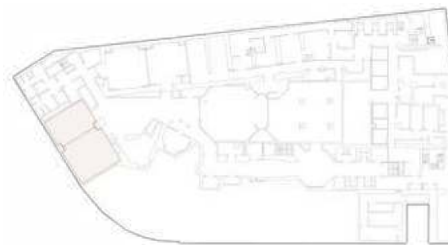
## LOUIS LUMIÈRE



GENERAL  
RECEPTION  
THEATRE  
CABARET  
CLASSROOM  
BANQUET  
CONFERENCE  
U-SHAPE  
  
MAIN MENU

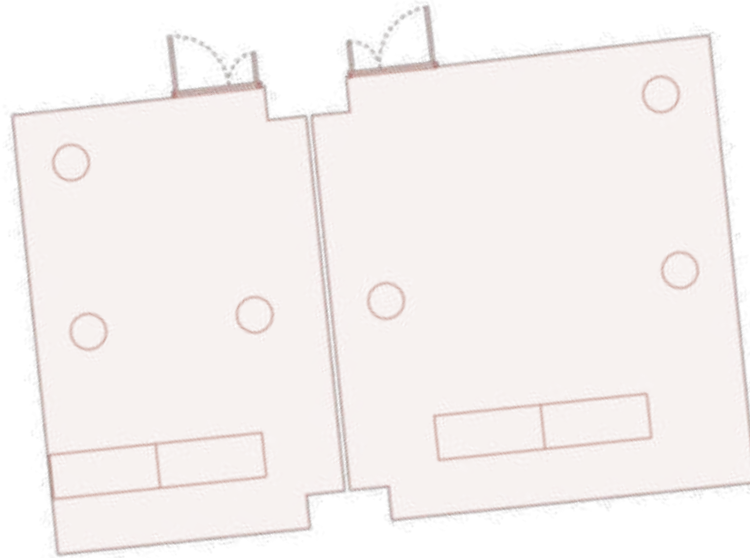
### SPECIFICATIONS

Capacity : 100 pax  
Dimensions : 87 m<sup>2</sup>



# FLOORPLAN RECEPTION LAYOUT

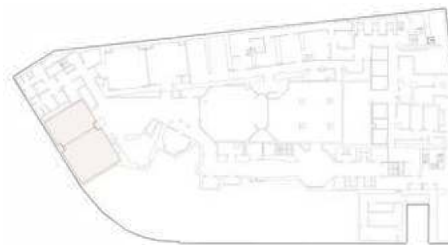
## LOUIS LUMIÈRE



GENERAL  
RECEPTION  
THEATRE  
CABARET  
CLASSROOM  
BANQUET  
CONFERENCE  
U-SHAPE  
  
MAIN MENU

### SPECIFICATIONS

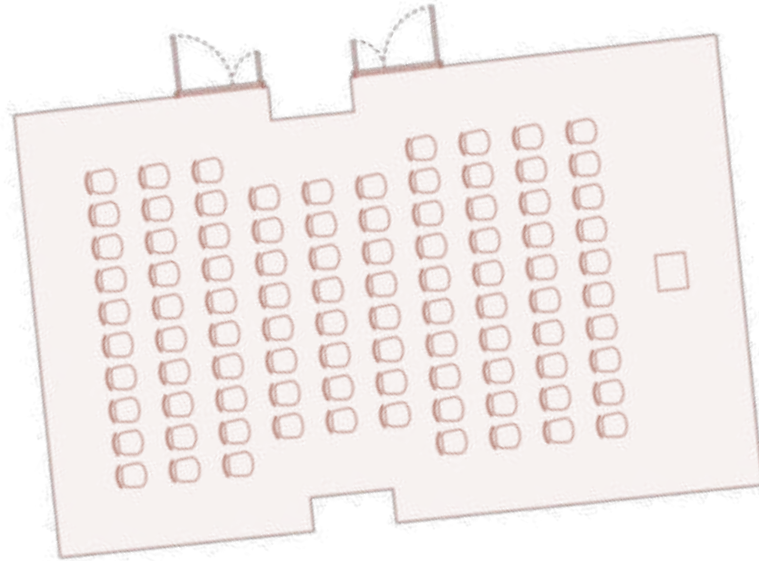
Capacity : 100 pax  
Dimensions : 87 m<sup>2</sup>





# FLOORPLAN THEATRE LAYOUT A+B

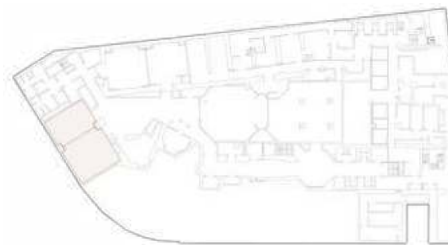
## LOUIS LUMIÈRE



GENERAL  
RECEPTION  
THEATRE  
CABARET  
CLASSROOM  
BANQUET  
CONFERENCE  
U-SHAPE  
  
MAIN MENU

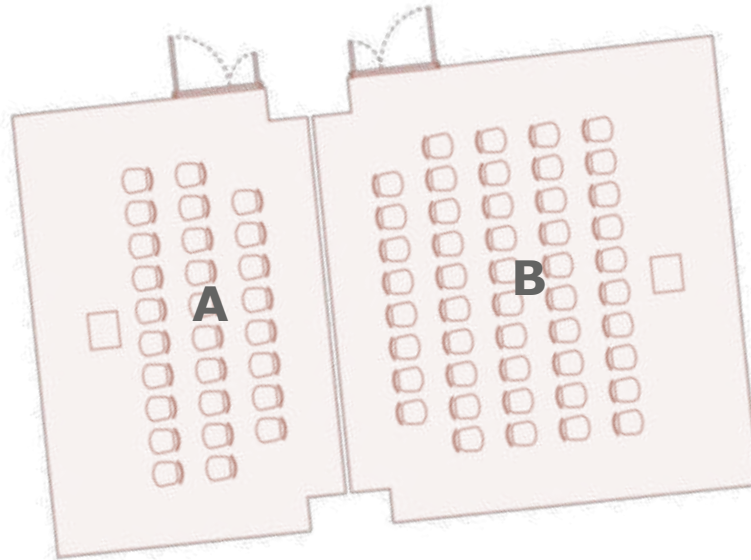
### SPECIFICATIONS

Capacity : 94 pax  
Dimensions : 87 m<sup>2</sup>



# FLOORPLAN THEATRE LAYOUT A OR B

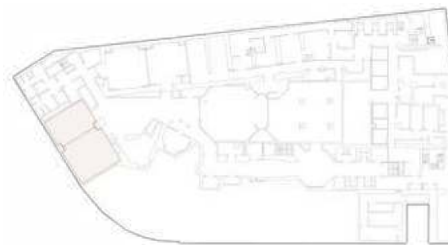
## LOUIS LUMIÈRE



GENERAL  
RECEPTION  
THEATRE  
CABARET  
CLASSROOM  
BANQUET  
CONFERENCE  
U-SHAPE  
  
MAIN MENU

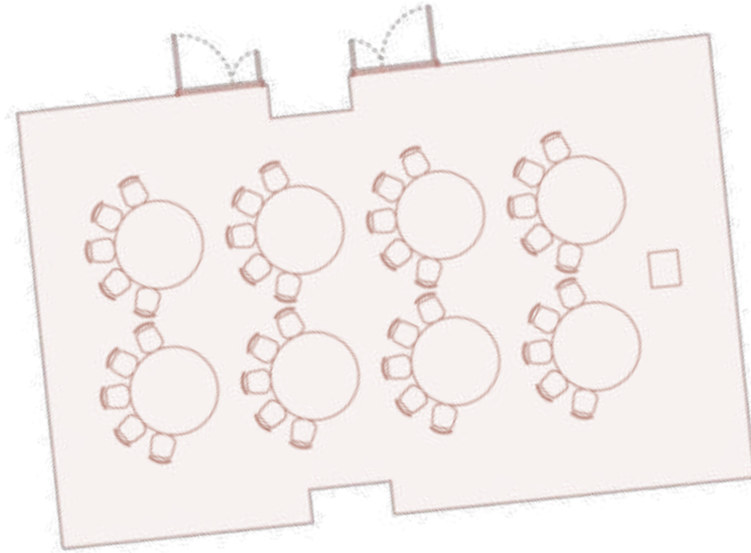
### SPECIFICATIONS

Capacities : **A** 28 / **B** 48 pax  
Dimensions : **A** 35,9 / **B** 50,5 m<sup>2</sup>



# FLOORPLAN CABARET LAYOUT A+B

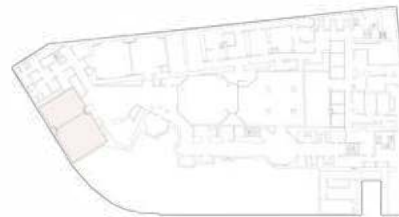
## LOUIS LUMIÈRE



GENERAL  
RECEPTION  
THEATRE  
CABARET  
CLASSROOM  
BANQUET  
CONFERENCE  
U-SHAPE  
  
MAIN MENU

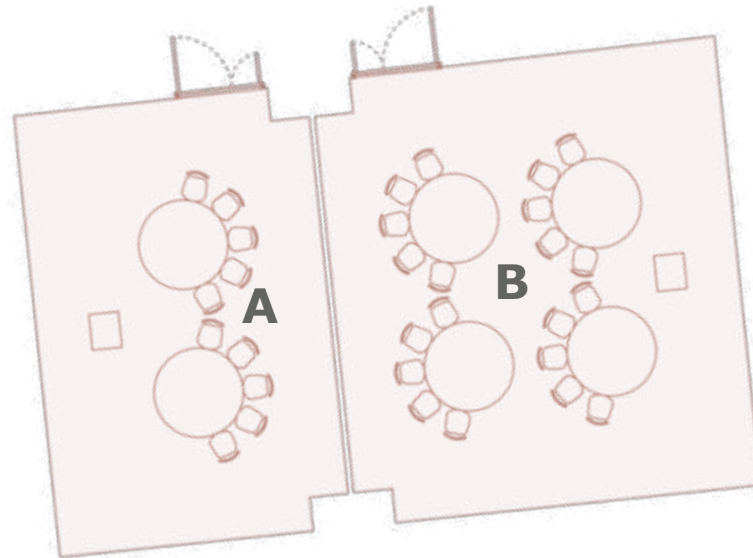
### SPECIFICATIONS

Capacity : 40 pax  
Dimensions : 87 m<sup>2</sup>



# FLOORPLAN CABARET LAYOUT A OR B

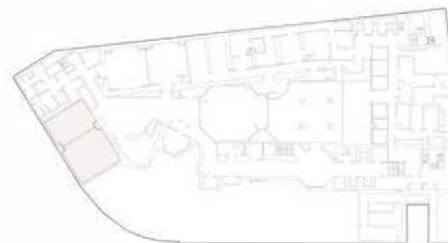
## LOUIS LUMIÈRE



GENERAL  
RECEPTION  
THEATRE  
CABARET  
CLASSROOM  
BANQUET  
CONFERENCE  
U-SHAPE  
  
MAIN MENU

### SPECIFICATIONS

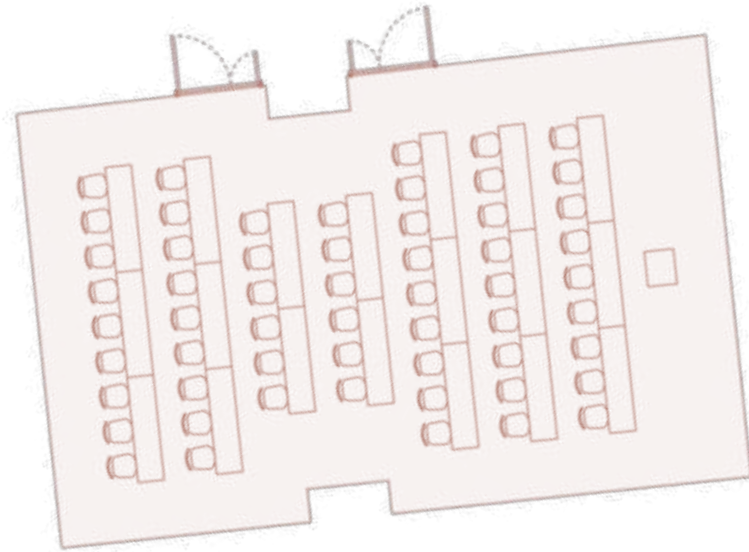
Capacities : **A** 10 / **B** 20 pax  
Dimensions : **A** 35,9 / **B** 50,5 m<sup>2</sup>





# FLOORPLAN CLASSROOM LAYOUT A+B

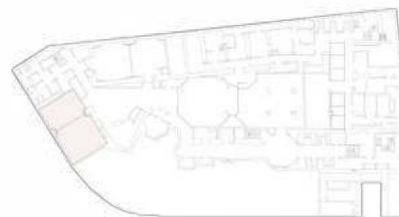
## LOUIS LUMIÈRE



GENERAL  
RECEPTION  
THEATRE  
CABARET  
CLASSROOM  
BANQUET  
CONFERENCE  
U-SHAPE  
  
MAIN MENU

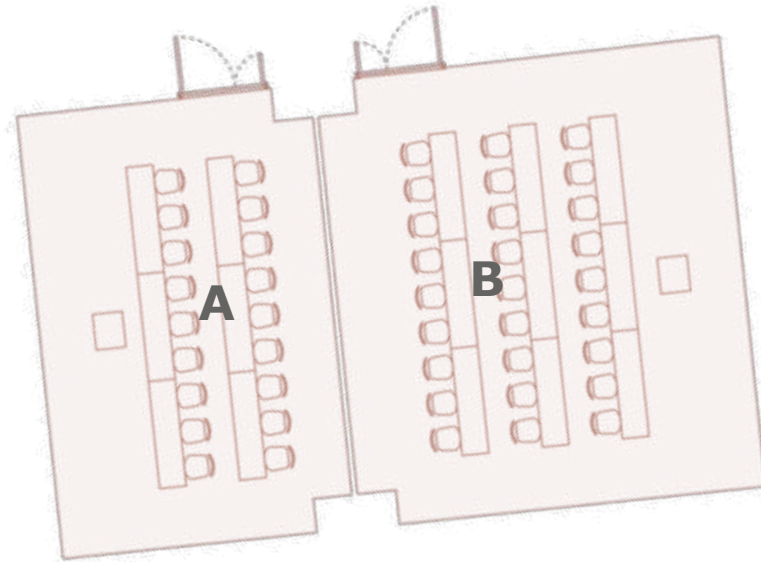
### SPECIFICATIONS

Capacity : 63 pax  
Dimensions : 87 m<sup>2</sup>



# FLOORPLAN CLASSROOM LAYOUT A OR B

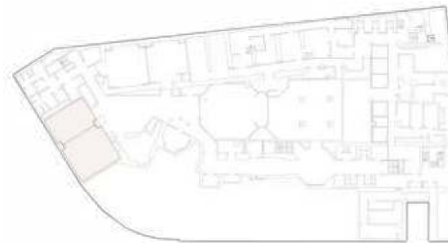
## LOUIS LUMIÈRE



GENERAL  
RECEPTION  
THEATRE  
CABARET  
CLASSROOM  
BANQUET  
CONFERENCE  
U-SHAPE  
  
MAIN MENU

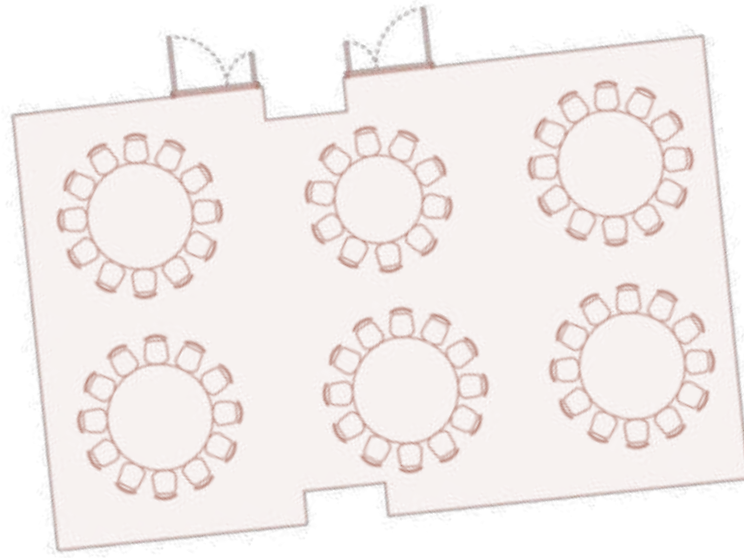
### SPECIFICATIONS

Capacities : **A** 27 / **B** 27 pax  
Dimensions : **A** 35,9 / **B** 50,5 m<sup>2</sup>



# FLOORPLAN BANQUET ROUNDS A+B

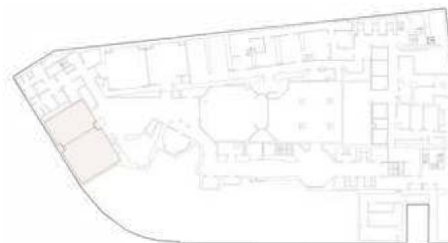
LOUIS LUMIÈRE



GENERAL  
RECEPTION  
THEATRE  
CABARET  
CLASSROOM  
BANQUET  
CONFERENCE  
U-SHAPE  
  
MAIN MENU

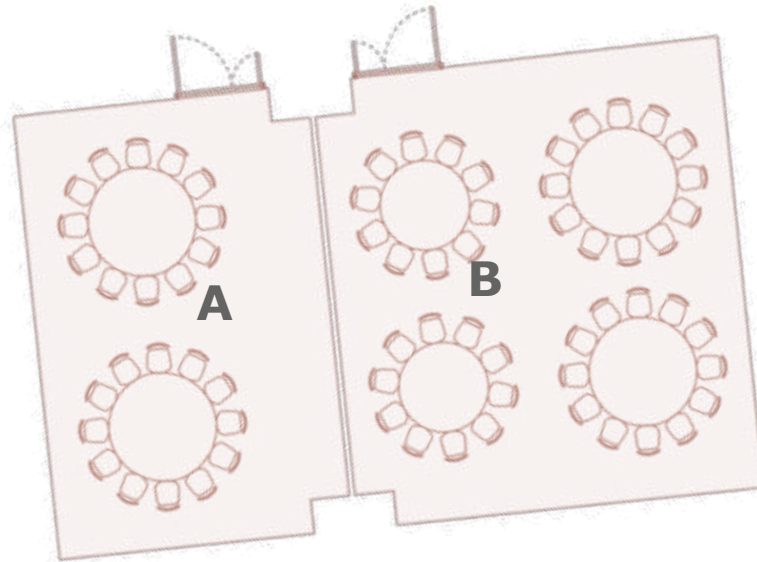
## SPECIFICATIONS

Capacity : 72 pax  
Dimensions : 87 m<sup>2</sup>



# FLOORPLAN BANQUET ROUNDS A OR B

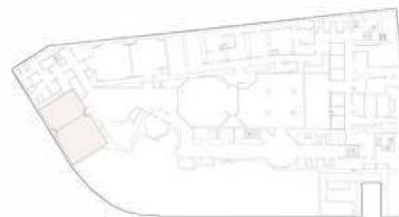
## LOUIS LUMIÈRE



GENERAL  
RECEPTION  
THEATRE  
CABARET  
CLASSROOM  
BANQUET  
CONFERENCE  
U-SHAPE  
  
MAIN MENU

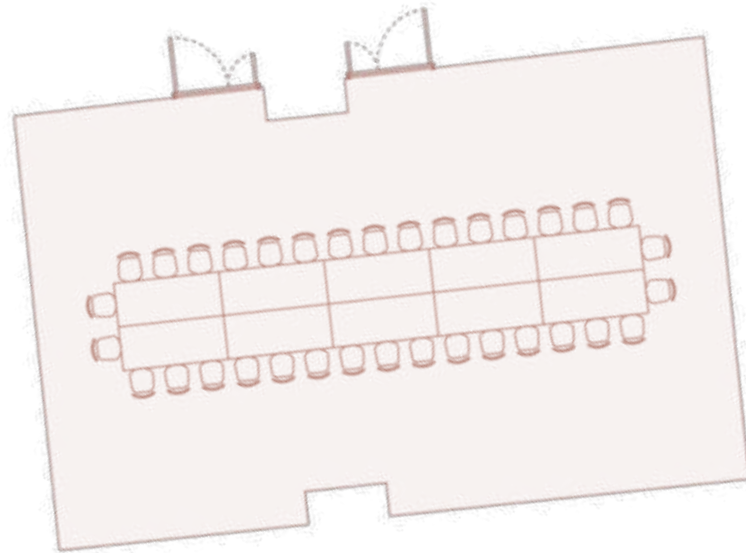
### SPECIFICATIONS

Capacities : **A** 24 / **B** 44 pax  
Dimensions : **A** 35,9 / **B** 50,5 m<sup>2</sup>



# FLOORPLAN CONFERENCE LAYOUT A+B

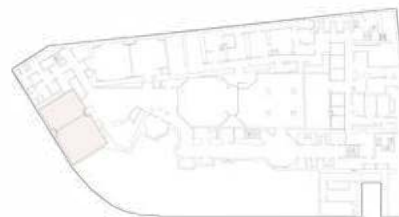
## LOUIS LUMIÈRE



GENERAL  
RECEPTION  
THEATRE  
CABARET  
CLASSROOM  
BANQUET  
CONFERENCE  
U-SHAPE  
  
MAIN MENU

### SPECIFICATIONS

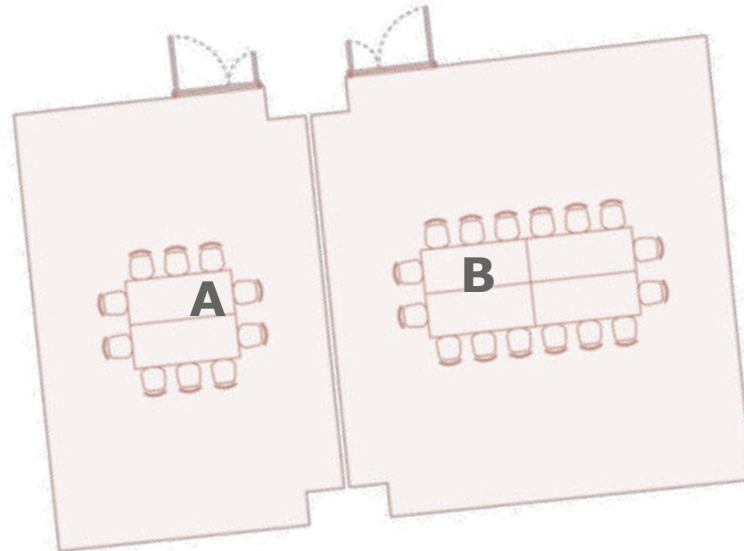
Capacity : 34 pax  
Dimensions : 87 m<sup>2</sup>





# FLOORPLAN CONFERENCE LAYOUT A OR B

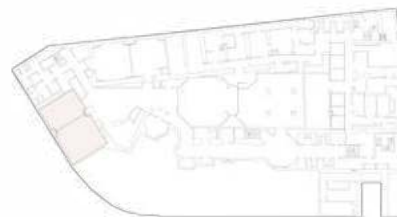
## LOUIS LUMIÈRE



GENERAL  
RECEPTION  
THEATRE  
CABARET  
CLASSROOM  
BANQUET  
CONFERENCE  
U-SHAPE  
  
MAIN MENU

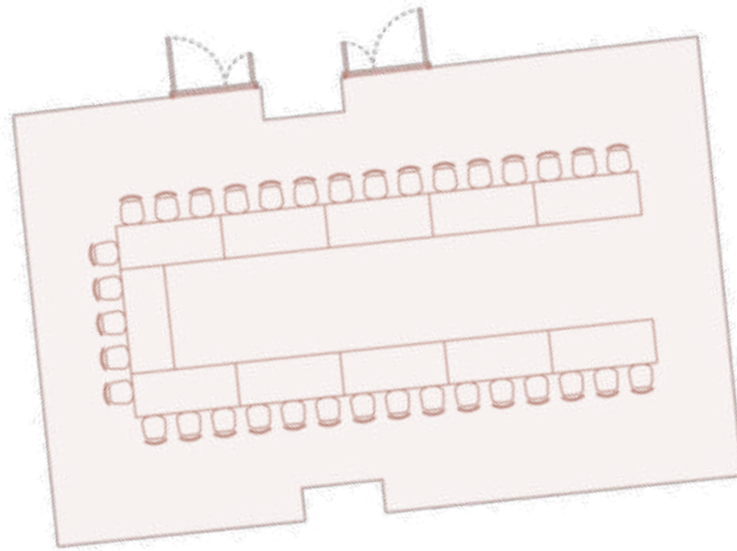
### SPECIFICATIONS

Capacities : **A** 10 / **B** 16 pax  
Dimensions : **A** 35,9 / **B** 50,5 m<sup>2</sup>



# FLOORPLAN U-SHAPE LAYOUT A+B

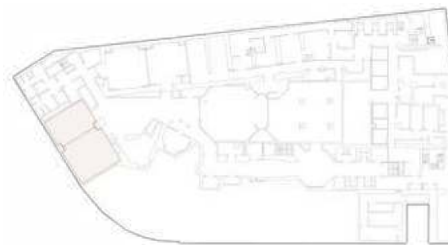
## LOUIS LUMIÈRE



GENERAL  
RECEPTION  
THEATRE  
CABARET  
CLASSROOM  
BANQUET  
CONFERENCE  
U-SHAPE  
  
MAIN MENU

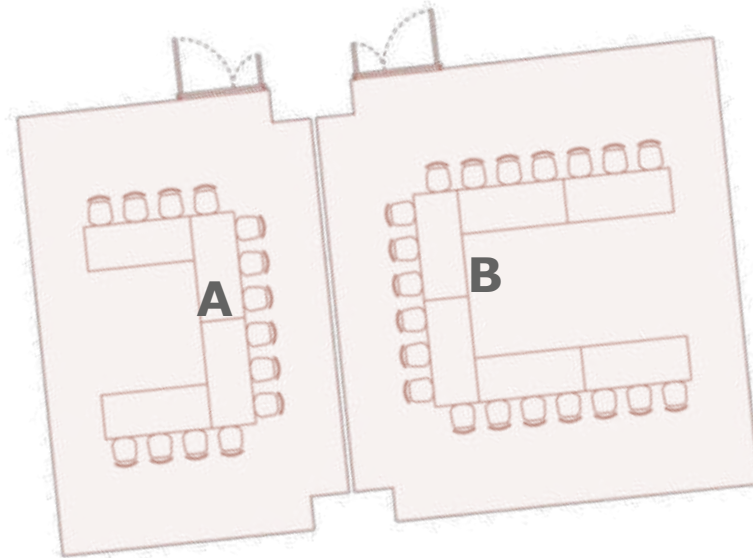
### SPECIFICATIONS

Capacity : 42 pax  
Dimensions : 87 m<sup>2</sup>



# FLOORPLAN U-SHAPE LAYOUT A OR B

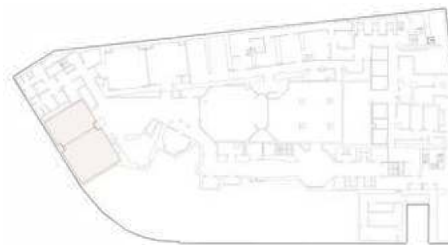
## LOUIS LUMIÈRE



GENERAL  
RECEPTION  
THEATRE  
CABARET  
CLASSROOM  
BANQUET  
CONFERENCE  
U-SHAPE  
  
MAIN MENU

### SPECIFICATIONS

Capacities : **A** 21 / **B** 24 pax  
Dimensions : **A** 35,9 / **B** 50,5 m<sup>2</sup>





## AUDIO VISUAL FEATURES

### LOUIS LUMIÈRE

- Screen: 240 X 180cm
- Video projector (5000 lumens)
- Barco Click & Share
- USB connection
- Amplification with 4 Bose enceintes DM2S (puissance tbc)
- High speed and Wi-fi internet access
- Air conditioning





## FOYER

The ideal setting for a reception. Your guests can enjoy the decor and the numerous art pieces honoring the brothers Lumiere who hosted the first movie projection in this very same space in 1895.

[OVERVIEW](#)

[FLOORPLAN](#)

[GALLERY](#)

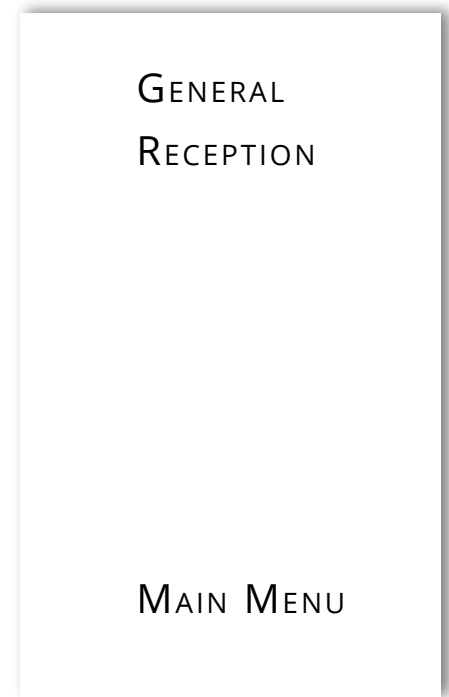
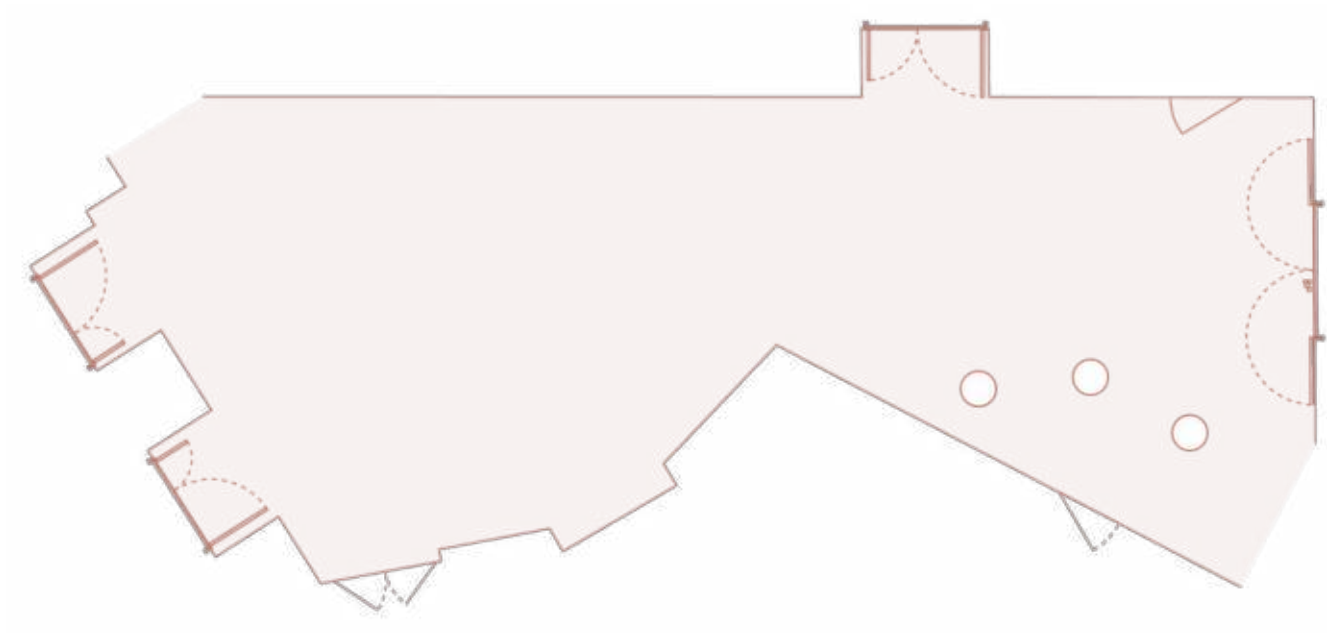






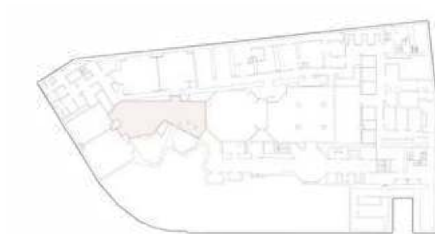
# FLOORPLAN GENERAL LAYOUT

## FOYER



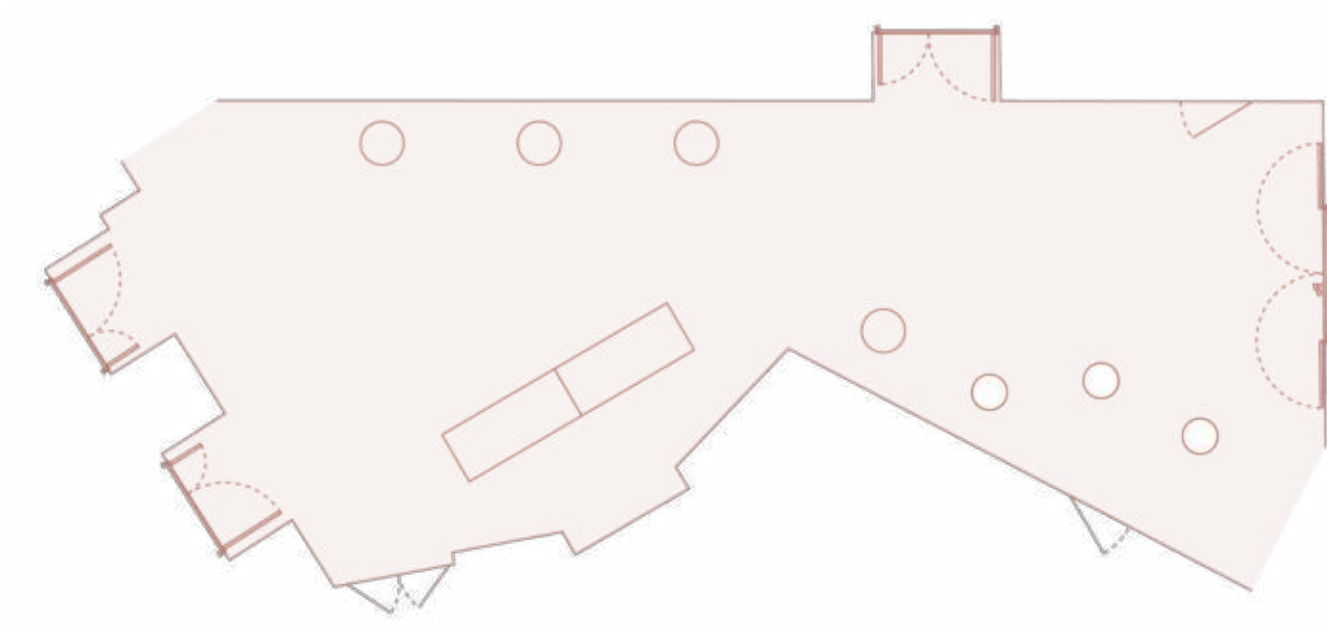
### SPECIFICATIONS

Capacity : 100 pax  
Dimensions : 91 m<sup>2</sup>



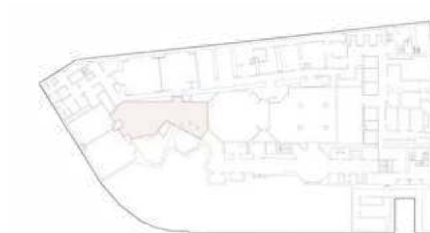
# FLOORPLAN RECEPTION LAYOUT

## FOYER



### SPECIFICATIONS

Capacity : 100 pax  
Dimensions : 91 m<sup>2</sup>



## MAGNIFIQUE EVENTS

Chose from one of our spectacular venues to host your event. Entertain, network, during a standing reception in the gallery before proceeding to dinner in the romantic and soothing atmosphere of our restaurant.

Having a great time and want to treat your guests a little longer? Make your way to the lounge where our expert mixologist will delight your palate with a variety of after dinner cocktails.

1. GALERIE DES NOUVELLES IMAGES
2. LE RESTAURANT
3. LE CAFÉ SCRIBE
4. LE BAR LOUNGE

## FLOORPLAN



OVERVIEW

FLOORPLAN

CAPACITY CHART



## GALERIE DES NOUVELLES IMAGES

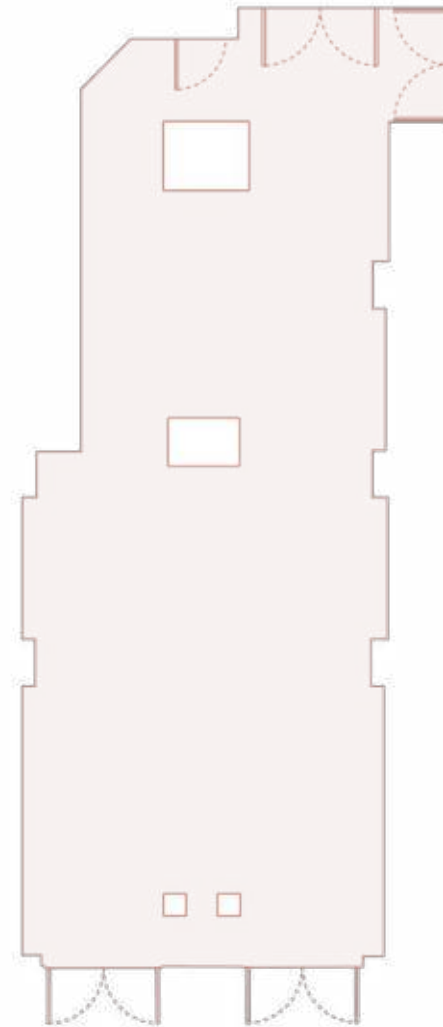
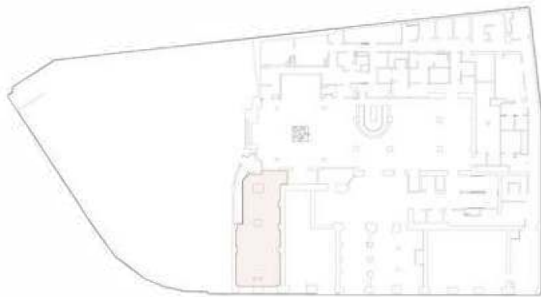
A trendy space in the center of Paris for private events. The Galerie has a street entrance and opens on to the hotel restaurant.

From the edgiest, most avant-garde cocktail parties to personal appearances by artists, La Galerie is the choice for anyone who loves creative talent and style.

# FLOORPLAN GENERAL LAYOUT GALERIE

## SPECIFICATIONS

Capacity : 65 pax  
Dimensions : 83 m<sup>2</sup>



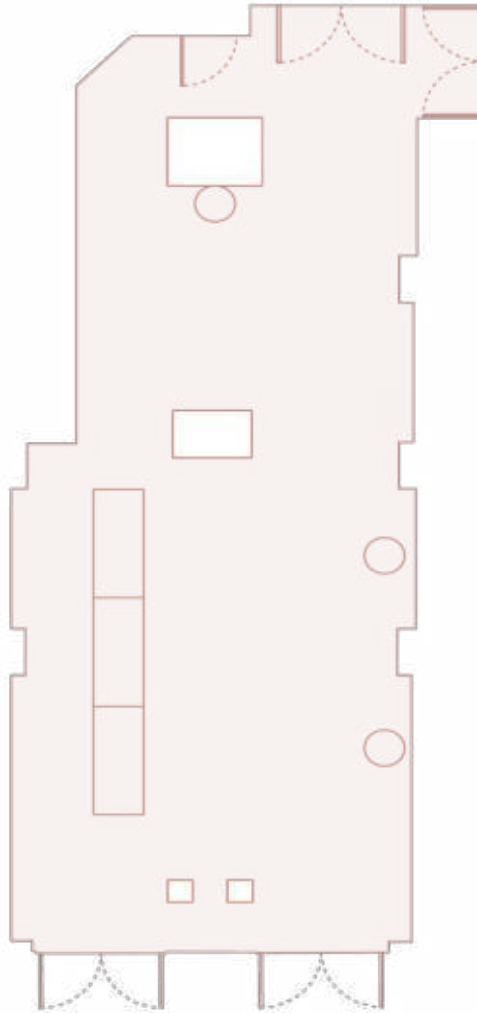
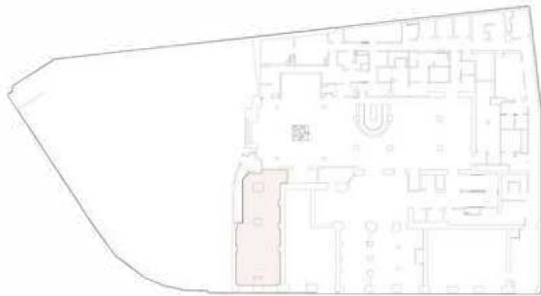
GENERAL  
RECEPTION  
CONFERENCE

MAIN MENU

# FLOORPLAN RECEPTION LAYOUT GALERIE

## SPECIFICATIONS

Capacity : 65 pax  
Dimensions : 83 m<sup>2</sup>



GENERAL  
RECEPTION  
CONFERENCE

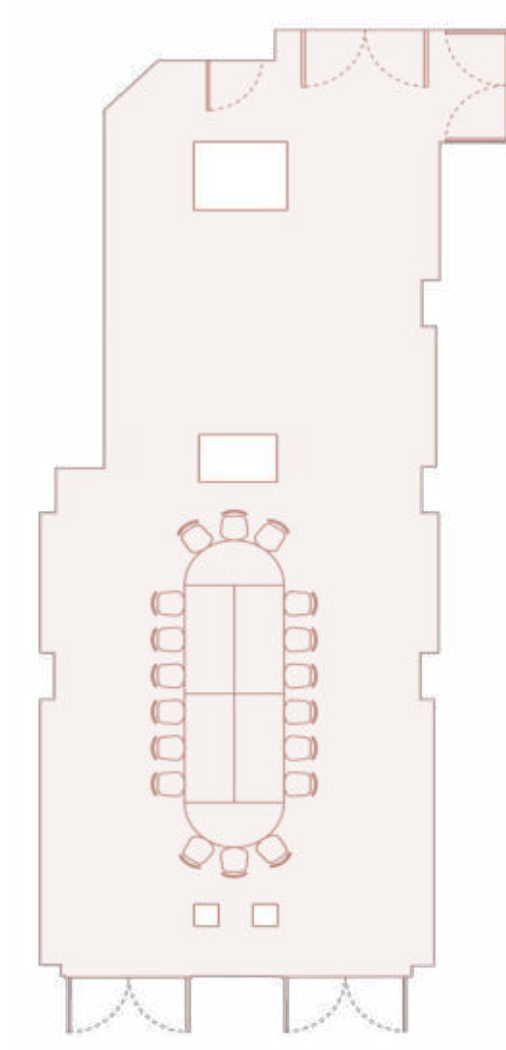
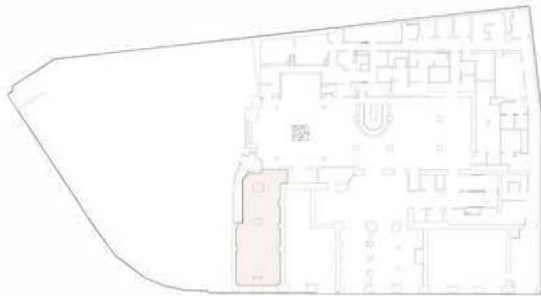
MAIN MENU



# FLOORPLAN CONFERENCE LAYOUT GALERIE

## SPECIFICATIONS

Capacity : 18 pax  
Dimensions : 83 m<sup>2</sup>



GENERAL  
RECEPTION  
CONFERENCE

MAIN MENU

# CAPACITY CHART

MEETING ROOM	DIMENSIONS M.	SURFACE m <sup>2</sup>	THEATER	U-SHAPE	BOARDROOM	CLASSROOM	BANQUETTING	COCKTAIL	CABARET
<b>AUGUSTE LUMIERE</b>	6,8 x 13,4	91,1	100	42	40	63	72	100	40
AUGUSTE LUMIERE a	6,8x6,7	45,6	42	17	16	18	40	40	15
AUGUSTE LUMIERE b	6,8x6,7	45,6	41	17	16	18	36	40	15
<b>LOUIS LUMIERE</b>	11,8 x 7,5	87,2	94	42	34	63	72	100	40
LOUIS LUMIERE a	7,5x4,9	35,9	28	21	10	27	24	40	10
LOUIS LUMIERE b	7,5x6,9	50,5	48	24	16	27	44	80	20
<b>FOYER</b>	16,5 x 5,95	91	/	/	/	/	/	100	/
<b>SALON 1895</b>	9,9 x 20,3	170,3	149	/	/	/	102	200	/
SALON 1895 a	9x11,1	85,3	89	23	28	42	58	70	35
SALON 1895 b	9,9x9,1	84,7	60	23	22	/	44	80	/
<b>GALERIE</b>	15,2 x 5,99	83,4	/	/	/	/	18	65	/

MAIN MENU



OVERVIEW

GALLERY

CAFÉ SCRIBE

BAR DU SCRIBE



## RIVAGES

In a poetic and contemporary venue, the restaurant's gastronomy follows the Scribe's culinary tradition, using the finest products and presenting them in ways that never fail to astonish. Available for groups up to 60 people our Executive Chef will be sure to create menus that will astonish your guests.

MAIN MENU



# LE CAFÉ SCRIBE

OVERVIEW

GALLERY

RIVAGES

BAR DU SCRIBE



## CAFÉ SCRIBE

If you're looking for the ultimate Parisian experience, head to Café Scribe.

During the day, it strikes the perfect balance between a sophisticated boutique and a Parisian cafe-bar. Here, tea- and coffee-heads, lovers of delicious pastries and foodies in search of seasonal, quality products can all find bliss.



MAIN MENU



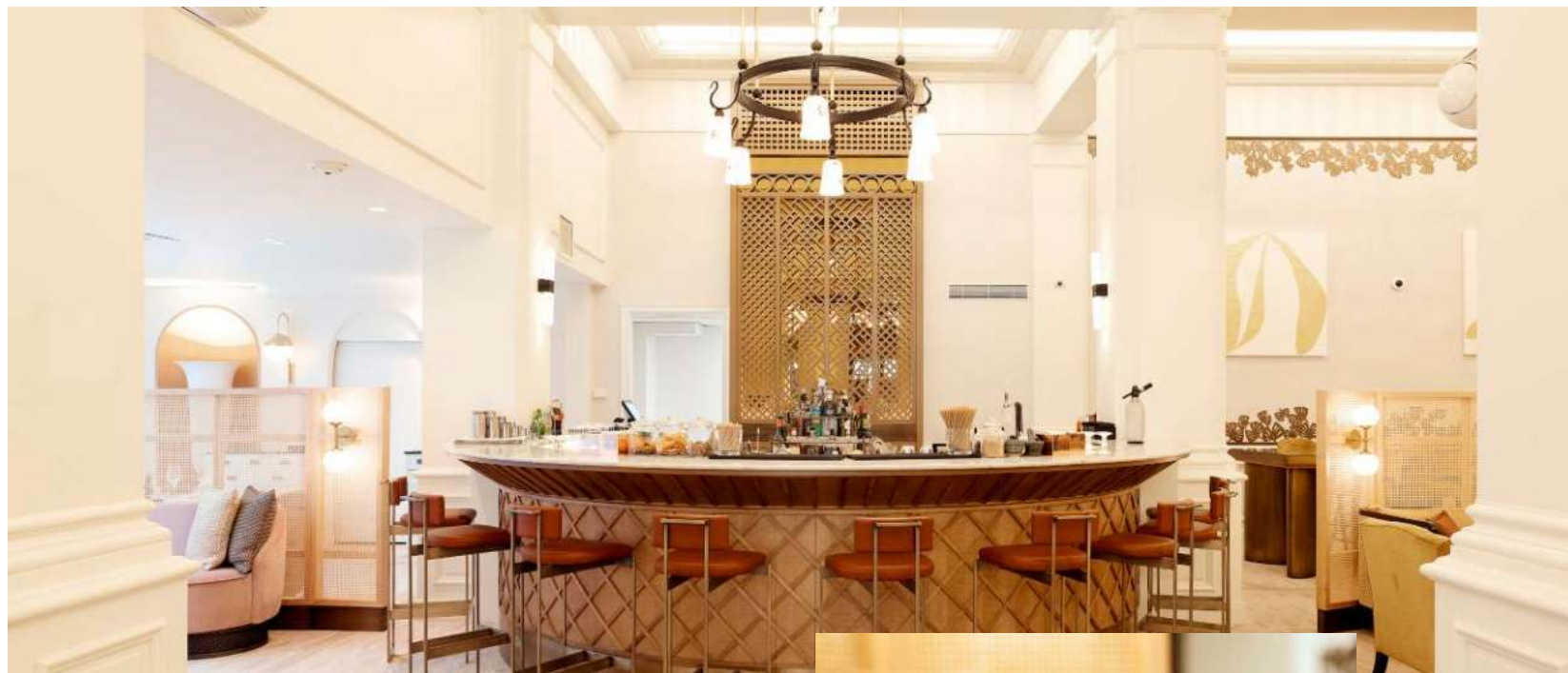
LE BAR DU SCRIBE

OVERVIEW

GALLERY

RIVAGES

CAFÉ SCRIBE



## BAR & LOUNGE

Reinvented with the Club spirit in mind by the designer, Tristan Auer, the bar welcomes you upon arrival at 1, rue Scribe.

The bar beats to the rhythm of the capital during the day, and in the evening, in a cozy candlelight ambiance, our mixology experts invite you to relax away from the hustle and bustle of the city with our retro and stunning cocktails.



MAIN MENU



## SUSTAINABILITY

### GREEN DAY DELEGATE OFFER

Our day delegate rates have been designed to provide you with a solution for the smooth running of a work meetings, in an emblematic address on the right bank of Paris. The recent renovation of the salons Lumière and the Salon «1895» wish to be part of an eco-responsible commitment by integrating the composition of our study packages into this approach.



Planet 21

Read more about the AccorHotels sustainability programme Planet 21

### FOOD AND BEVERAGE

Welcome coffee

Morning energizing break

Wellness buffet lunch

Afternoon detox break

Permanent tea, coffee and detox filtered water station

Plastic straws have been removed from the catering and replaced with corn straws.

### GUESTROOM PRODUCT

Cotton swabs in bamboo

Biodegradable coffee

Rooms are cleaned using a dry steam system

Soaps are recycled by the UNISOAP and sent to countries in need

For stays longer than one night, customers are encouraged to keep their sheets and towels.

MAIN MENU

# ACCOMMODATION AND FACILITIES

## LIVE IN PARIS LIKE AT HOME

Inspired by the Haussman apartments with ideal dimensions to welcome you, the rooms and suites are the perfect way to live in Paris like home with your family and friends.

Each bedroom offer a dressing room designed in reference to the universe of luxury and shopping of the neighborhood.

## ROOM & SUITES

- 163 rooms from Superior to Luxury Premium
- 38 suites from Junior Suite to Duplex



## DISTINCTIVE FEATURES

- A 19th century Haussmann building
- Ultimate Parisian residence atmosphere by designer Tristan Auer

## FEATURES AND AMENITIES

- Fireplace in all rooms and Suites
- Large open wardrobe
- Chromecast
- Mini bar including gluten free options
- UK and US plugs
- Sofitel MyBed™

[MAIN MENU](#)



# ALL MEETING PLANNER

## 2 EUROS SPENT = 1 REWARD POINT

Earn 1 Reward point for every 2 Euros spent whenever you plan an event in one of our hotels.

## FLEX TO FIT

Finance future events using your points. Or use them for your next trip, for concert tickets, or a match. Your points, your choice.

## SHARING POINTS

You can also share your points with other members of ALL.

## POINTS, WHENEVER.

There are no blackout dates on Reward points. Use them whenever you choose.

## POINTS AND PEACE OF MIND

There are no expiry dates on your points. No rush, no fuss.

## PLAN MORE, EARN MORE

Earn even more Reward points whenever you plan an event.

## COMPLEMENTARY MEMBERSHIP

It's quick and easy to join the ALL Meeting Planner.



[MAIN MENU](#)





# LOCATION

## NEARBY

Famous sites Opera Garnier, Place Vendôme, Grands Boulevards and exclusive department stores

Museums Louvre, Art Décoratifs, Grand Palais

Entertainment The Olympia hall, the Grand Rex, Edouard VII Theater

## TRANSPORTS

Metro Opera, Madeleine, Havre Caumartin Metro Stations

RER A Auber Station

AIRPORT Roissy CDC International Airport by Roissybus Opéra Station (50 m)





SOFITEL LE SCRIBE PARIS OPERA

1 RUE SCRIBE – PARIS – FRANCE TEL.: +33 (0)144712424 – delphine.peyron@sofitel.com

[www.sofitel-le-scribe-paris-opera.com](http://www.sofitel-le-scribe-paris-opera.com)



Join ALL – Accor's lifestyle loyalty programme –  
A world of experiences and benefits awaits.